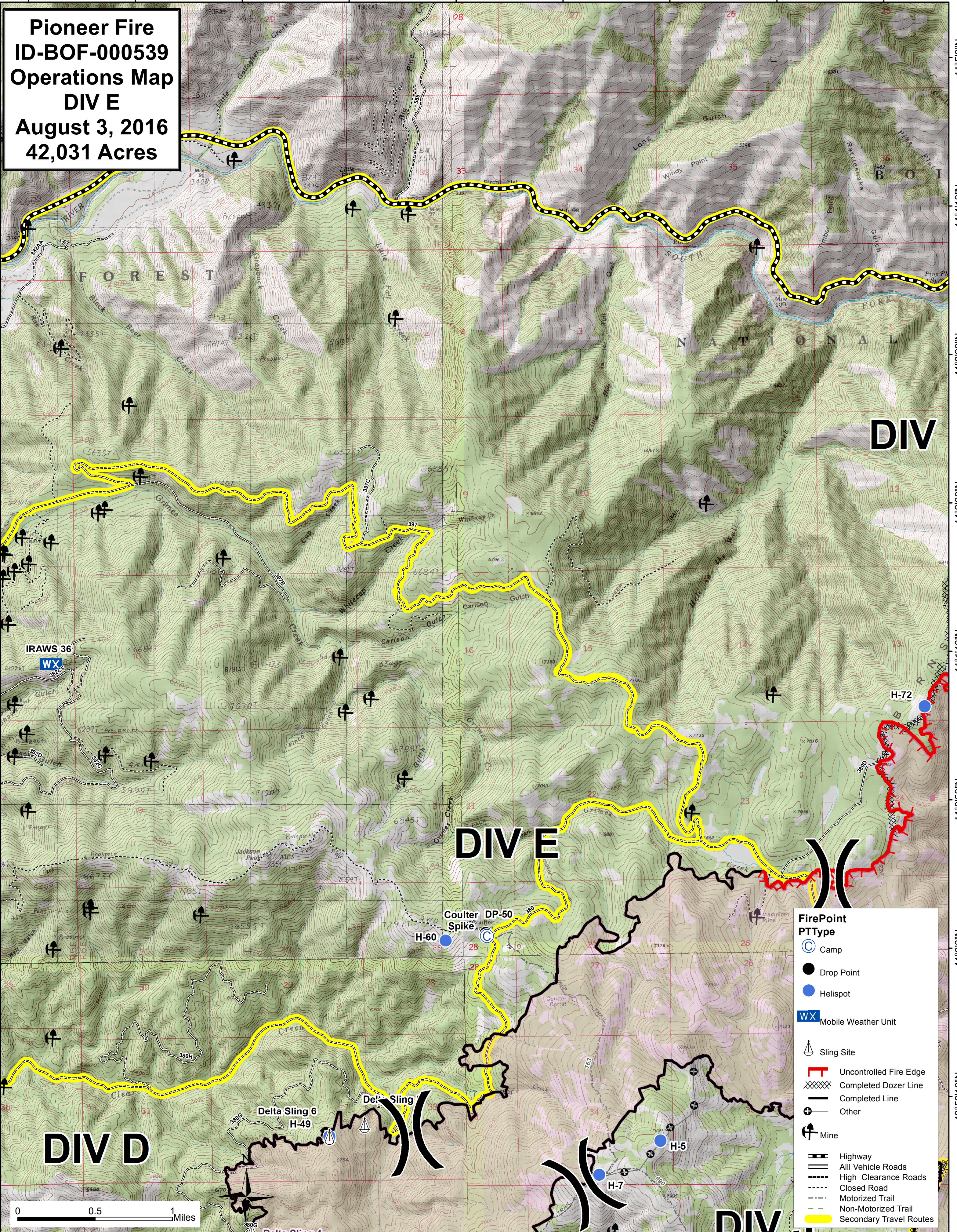


115°48'20"W 115°47'30"W 115°46'40"W 115°45'50"W 115°45'0"W 115°44'10"W 115°43'20"W 115°42'30"W 115°41'40"W

Pioneer Fire
ID-BOF-000539
Operations Map
DIV E
August 3, 2016
42,031 Acres



FirePoint	
PTType	
	Camp
	Drop Point
	Helispot
	Mobile Weather Unit
	Sling Site
	Uncontrolled Fire Edge
	Completed Dozer Line
	Completed Line
	Other
	Mine
	Highway
	All Vehicle Roads
	High Clearance Roads
	Closed Road
	Motorized Trail
	Non-Motorized Trail
	Secondary Travel Routes

115°48'20"W 115°47'30"W 115°46'40"W 115°45'50"W 115°45'0"W 115°44'10"W 115°43'20"W 115°42'30"W 115°41'40"W