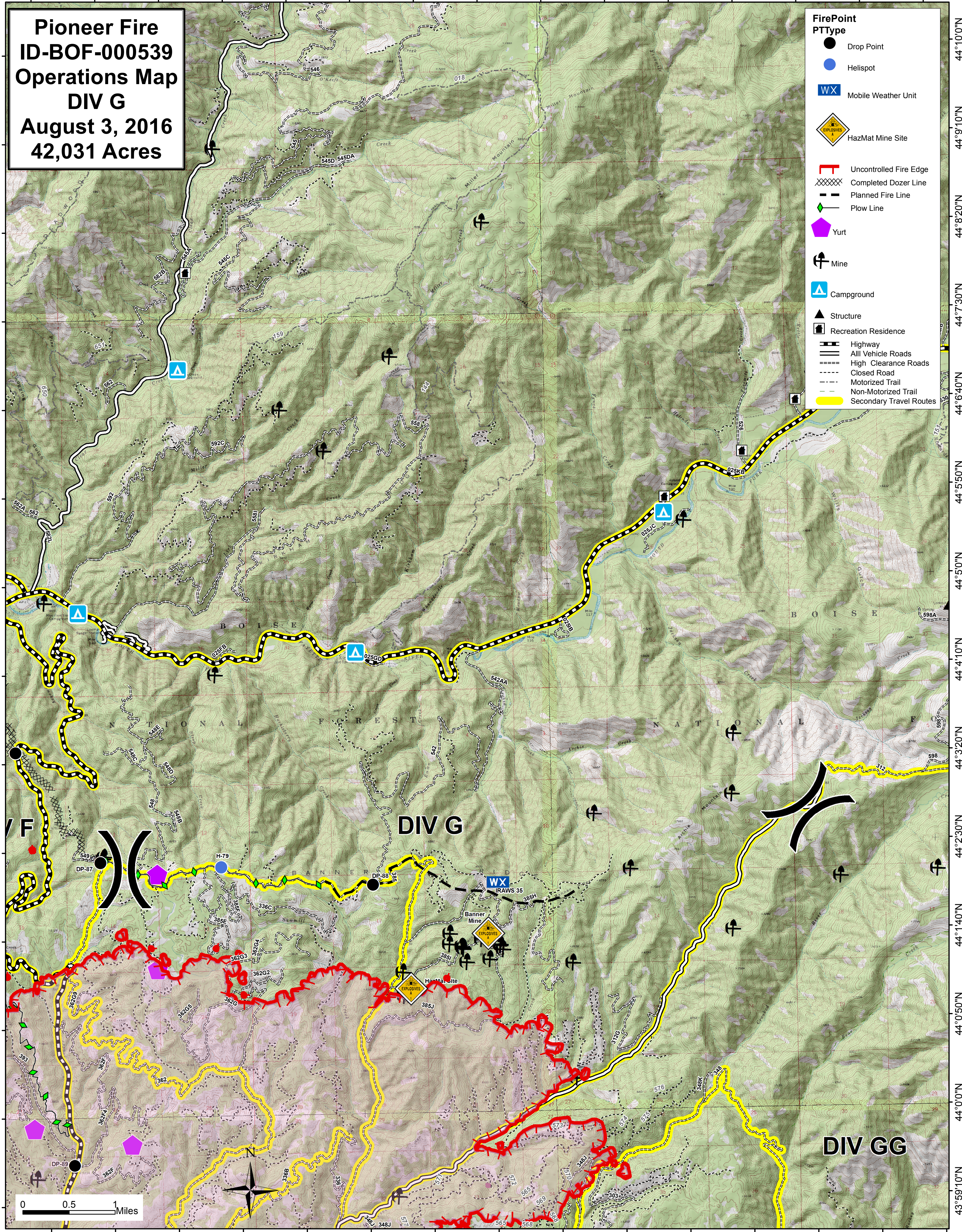


115°36'40"W 115°35'50"W 115°35'0"W 115°34'10"W 115°33'20"W 115°32'30"W 115°31'40"W 115°30'50"W 115°30'0"W 115°29'10"W 115°28'20"W 115°27'30"W 115°26'40"W 115°25'50"W 115°25'0"W

**Pioneer Fire**  
**ID-BOF-000539**  
**Operations Map**  
**DIV G**  
**August 3, 2016**  
**42,031 Acres**

- FirePoint**  
**PTType**
- Drop Point
  - Helispot
  - WX Mobile Weather Unit
  - Explosives HazMat Mine Site
  - Uncontrolled Fire Edge
  - Completed Dozer Line
  - Planned Fire Line
  - Plow Line
  - Yurt
  - Mine
  - Campground
  - Structure
  - Recreation Residence
  - Highway
  - All Vehicle Roads
  - High Clearance Roads
  - Closed Road
  - Motorized Trail
  - Non-Motorized Trail
  - Secondary Travel Routes



44°10'0"N  
44°9'10"N  
44°8'20"N  
44°7'30"N  
44°6'40"N  
44°5'50"N  
44°5'0"N  
44°4'10"N  
44°3'20"N  
44°2'30"N  
44°1'40"N  
44°0'50"N  
44°0'0"N  
43°59'10"N

115°36'40"W 115°35'50"W 115°35'0"W 115°34'10"W 115°33'20"W 115°32'30"W 115°31'40"W 115°30'50"W 115°30'0"W 115°29'10"W 115°28'20"W 115°27'30"W 115°26'40"W 115°25'50"W 115°25'0"W