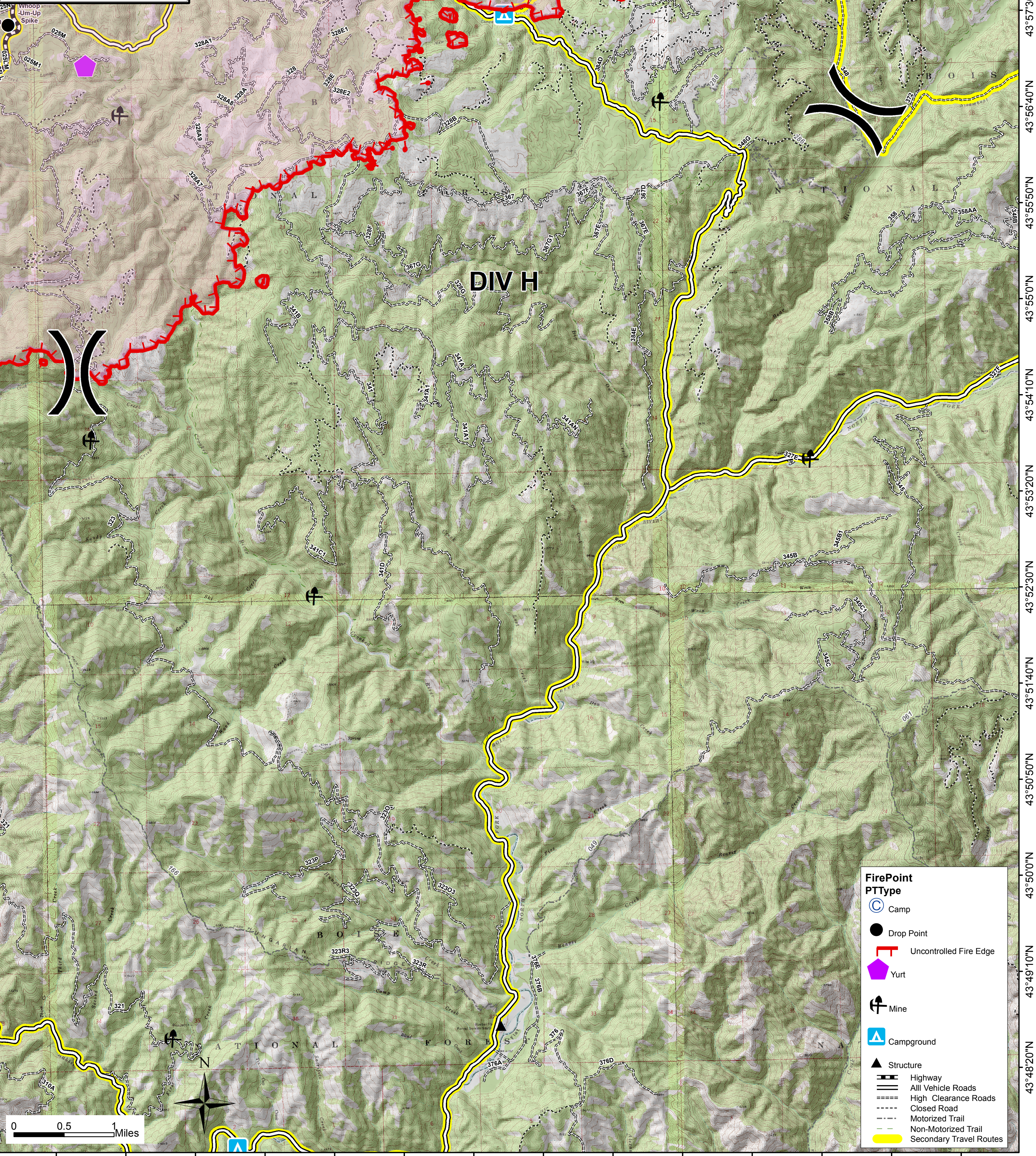


115°37'30"W 115°36'40"W 115°35'50"W 115°35'0"W 115°34'10"W 115°33'20"W 115°32'30"W 115°31'40"W 115°30'50"W 115°30'0"W 115°29'10"W 115°28'20"W 115°27'30"W 115°26'40"W 115°25'50"W

Pioneer Fire
ID-BOF-000539
Operations Map
DIV H
August 3, 2016
42,031 Acres



- FirePoint PType**
- Camp
 - Drop Point
 - Uncontrolled Fire Edge
 - Yurt
 - Mine
 - Campground
 - Structure
- Infrastructure**
- Highway
 - All Vehicle Roads
 - High Clearance Roads
 - Closed Road
 - Motorized Trail
 - Non-Motorized Trail
 - Secondary Travel Routes

0 0.5 1 Miles



115°37'30"W 115°36'40"W 115°35'50"W 115°35'0"W 115°34'10"W 115°33'20"W 115°32'30"W 115°31'40"W 115°30'50"W 115°30'0"W 115°29'10"W 115°28'20"W 115°27'30"W 115°26'40"W 115°25'50"W