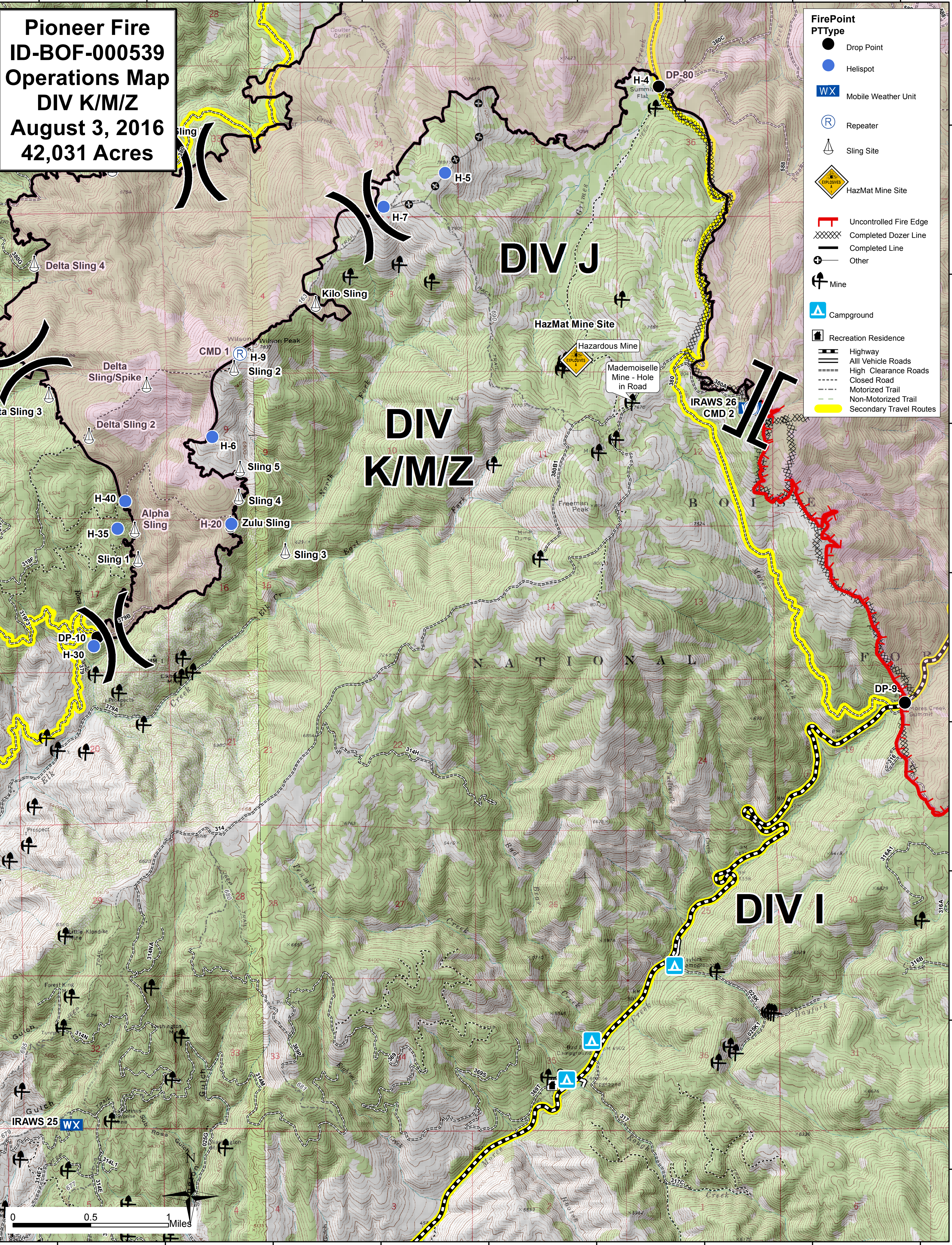


115°46'40"W 115°45'50"W 115°45'0"W 115°44'10"W 115°43'20"W 115°42'30"W 115°41'40"W 115°40'50"W 115°40'0"W

**Pioneer Fire**  
**ID-BOF-000539**  
**Operations Map**  
**DIV K/M/Z**  
**August 3, 2016**  
**42,031 Acres**

- FirePoint**  
**PTType**
- Drop Point
  - Helispot
  - WX Mobile Weather Unit
  - Ⓡ Repeater
  - ⚓ Sling Site
  - ⚠ HazMat Mine Site
  - 🔥 Uncontrolled Fire Edge
  - ⊘ Completed Dozer Line
  - Completed Line
  - ⊕ Other
  - ⚡ Mine
  - ⛺ Campground
  - 🏠 Recreation Residence
  - 🛣 Highway
  - 🛤 All Vehicle Roads
  - 🛤 High Clearance Roads
  - ⋯ Closed Road
  - ⋯ Motorized Trail
  - ⋯ Non-Motorized Trail
  - 🟡 Secondary Travel Routes



115°46'40"W 115°45'50"W 115°45'0"W 115°44'10"W 115°43'20"W 115°42'30"W 115°41'40"W 115°40'50"W 115°40'0"W

43°59'10"N  
43°58'20"N  
43°57'30"N  
43°56'40"N  
43°55'50"N  
43°55'0"N  
43°54'10"N  
43°53'20"N

43°59'10"N  
43°58'20"N  
43°57'30"N  
43°56'40"N  
43°55'50"N  
43°55'0"N  
43°54'10"N  
43°53'20"N