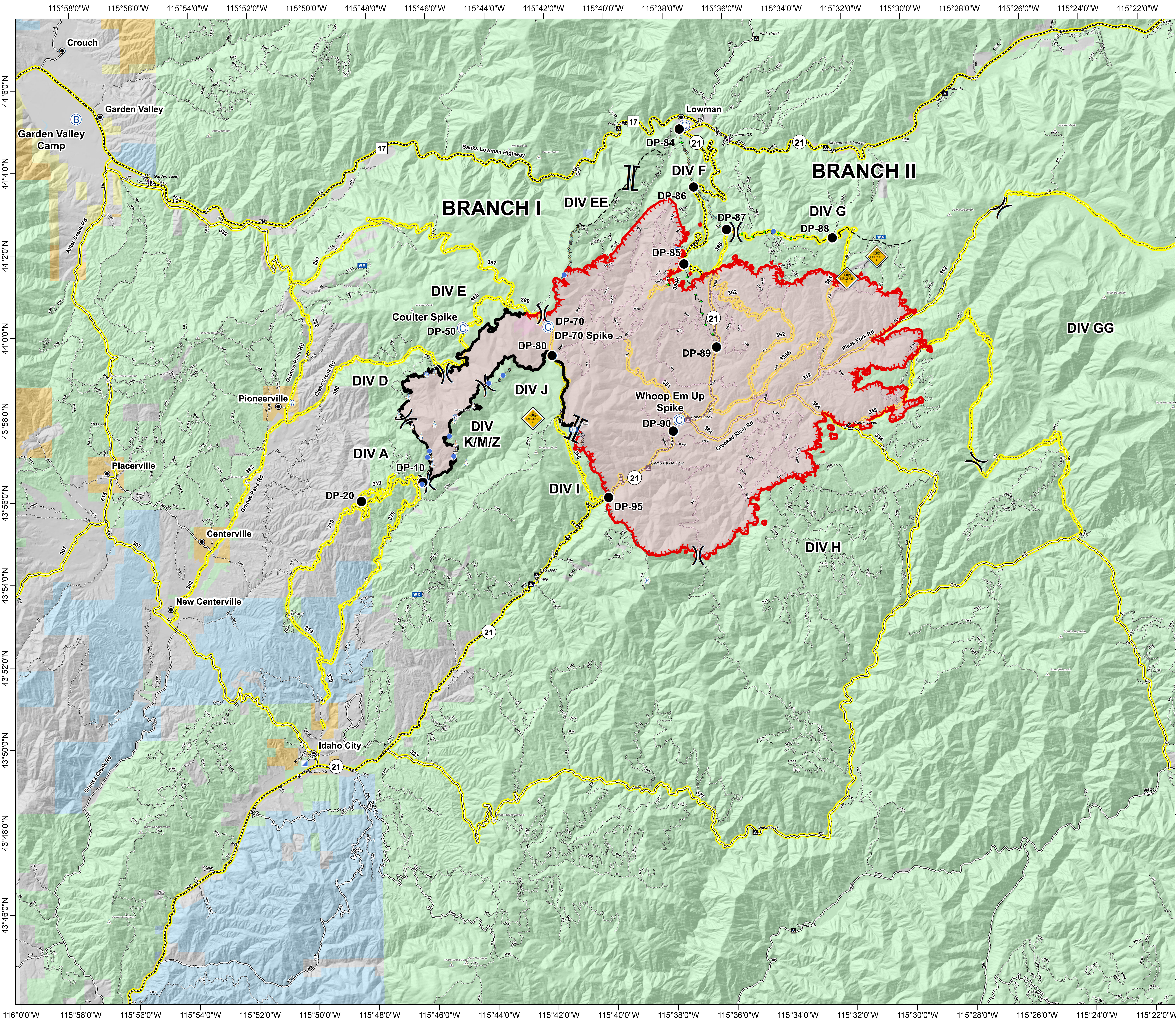


Pioneer Fire ID-BOF-000539 Transportation Map August 3, 2016 42,031 Acres



- ### Legend
- Branch
 - Division
 - Camp
 - Drop Point
 - Helispot
 - Incident Base
 - Incident Command Post
 - Mobile Weather Unit
 - Repeater
 - Sling Site
 - Water Source
 - HazMat Explosives
 - Uncontrolled Fire Edge
 - Completed Dozer Line
 - Completed Line
 - Road as Completed Line
 - Planned Fire Line
 - Constructed Fuel Break
 - Confinement Line
 - Town
 - Mountain Peak
 - Ranger Station
 - Campground
 - Highway
 - All Vehicle Roads
 - High Clearance Roads
 - Secondary Travel Routes
 - Forest Service land
 - Private Land
 - State Land
 - Bureau of Land Mgmt
 - BOR

Great Basin Team 1 GIS
8/2/2016
8:41:29 PM

0 0.55 1.1 1.65 2.2
Miles