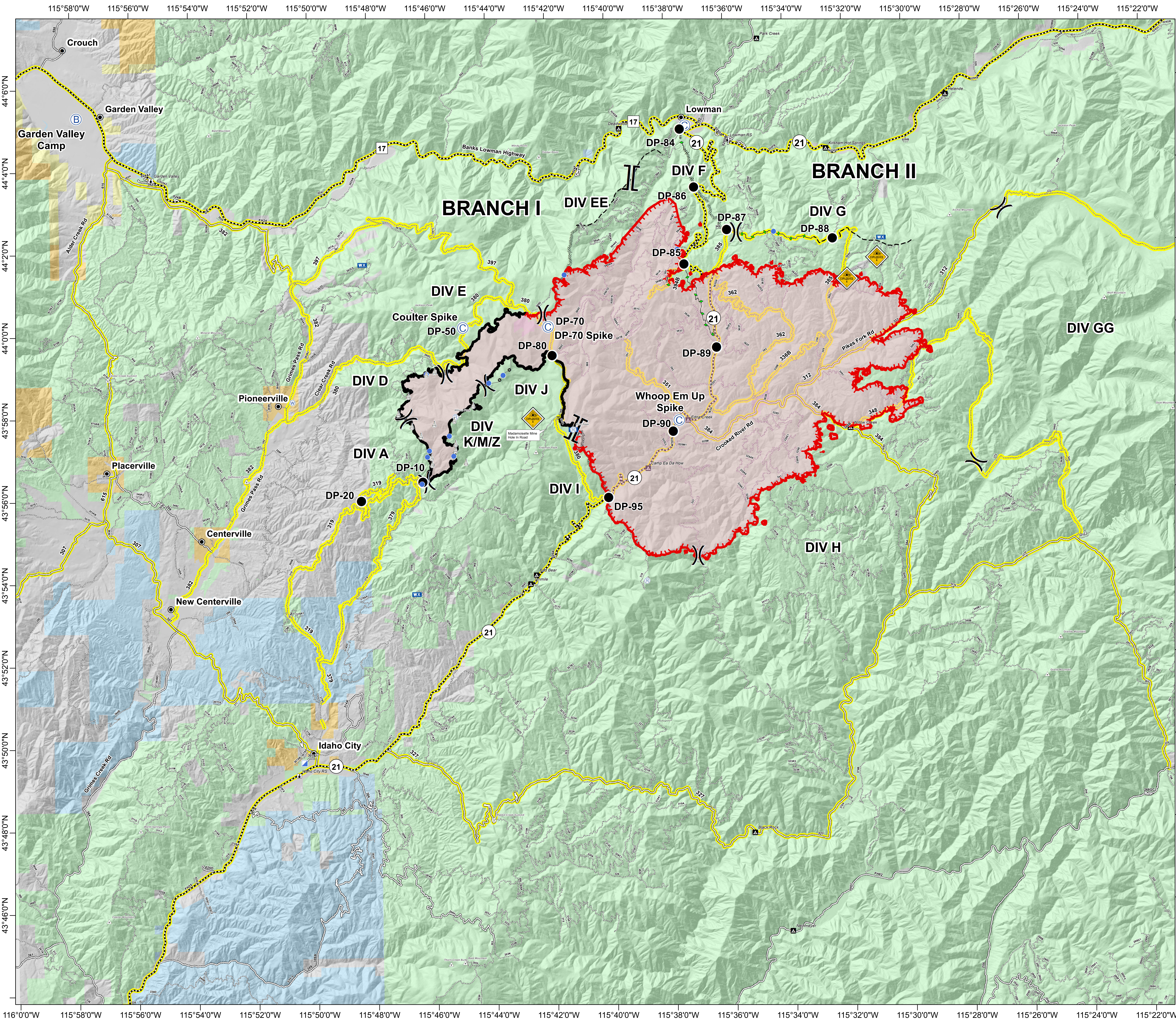


Pioneer Fire ID-BOF-000539 Transportation Map August 3, 2016 42,031 Acres



Legend

- Branch
- Division
- Camp
- Drop Point
- Helispot
- Incident Base
- Incident Command Post
- Mobile Weather Unit
- Repeater
- Sling Site
- Water Source
- HazMat Explosives
- Uncontrolled Fire Edge
- Completed Dozer Line
- Completed Line
- Road as Completed Line
- Planned Fire Line
- Constructed Fuel Break
- Confinement Line
- Town
- Mountain Peak
- Ranger Station
- Campground
- Highway
- All Vehicle Roads
- High Clearance Roads
- Secondary Travel Routes
- Forest Service land
- Private Land
- State Land
- Bureau of Land Mgmt
- BOR

Great Basin Team 1 GIS
9/2/2016
8:46:51 PM

0 0.55 1.1 1.65 2.2
Miles