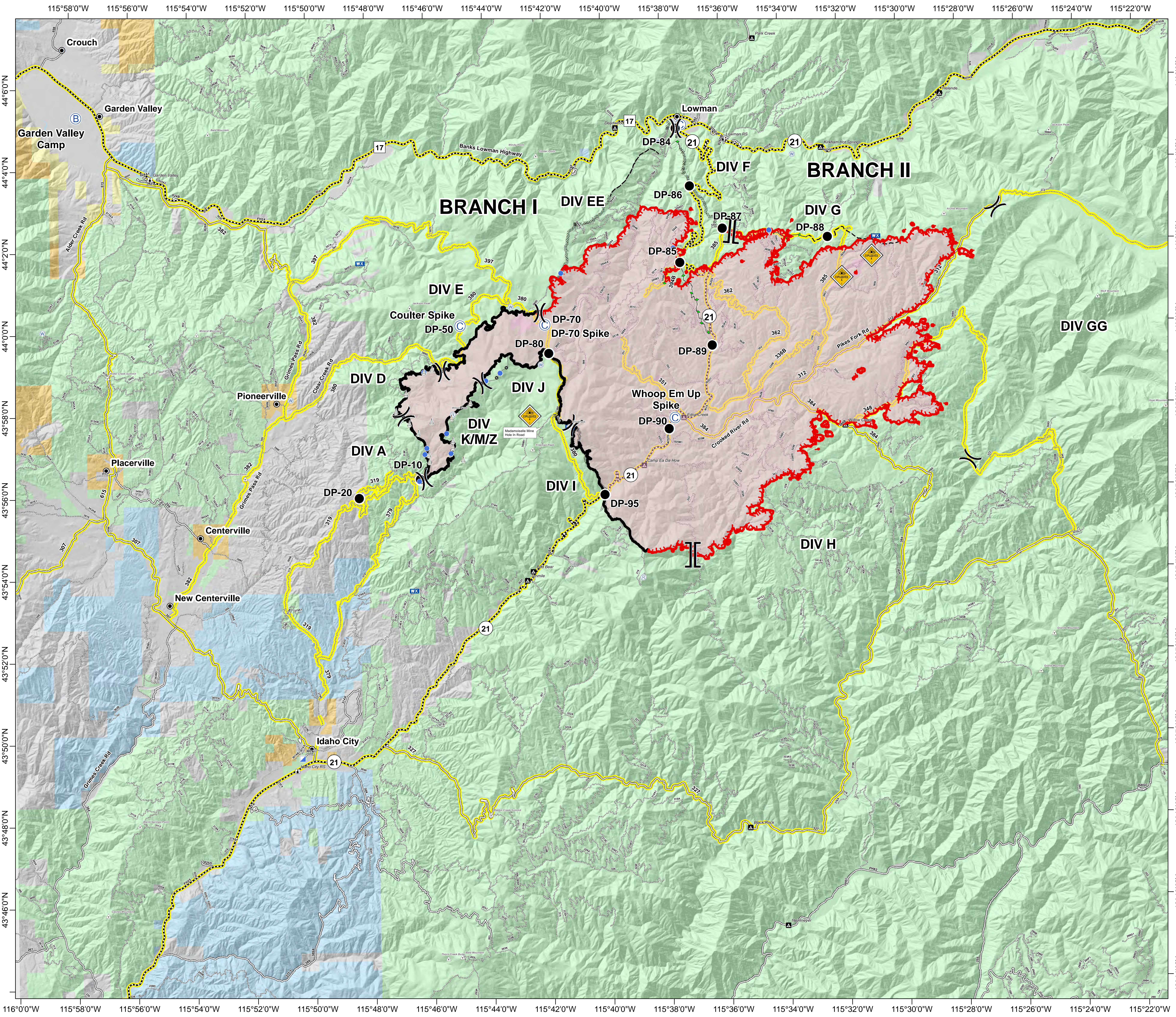


# Pioneer Fire ID-BOF-000539 Transportation Map August 4, 2016 48,350 Acres

- ### Legend
- Branch
  - Division
  - Camp
  - Drop Point
  - Helispot
  - Incident Base
  - Incident Command Post
  - Mobile Weather Unit
  - Repeater
  - Sling Site
  - Water Source
  - HazMat Explosives
  - Uncontrolled Fire Edge
  - Completed Dozer Line
  - Completed Line
  - Road as Completed Line
  - Planned Fire Line
  - Constructed Fuel Break
  - Confinement Line
  - Town
  - Mountain Peak
  - Ranger Station
  - Campground
  - Highway
  - All Vehicle Roads
  - High Clearance Roads
  - Secondary Travel Routes
  - Forest Service land
  - Private Land
  - State Land
  - Bureau of Land Mgmt
  - BOR



0 0.55 1.1 1.65 2.2  
Miles

Great Basin Team 1 GIS  
8/3/2016  
8:24:08 PM