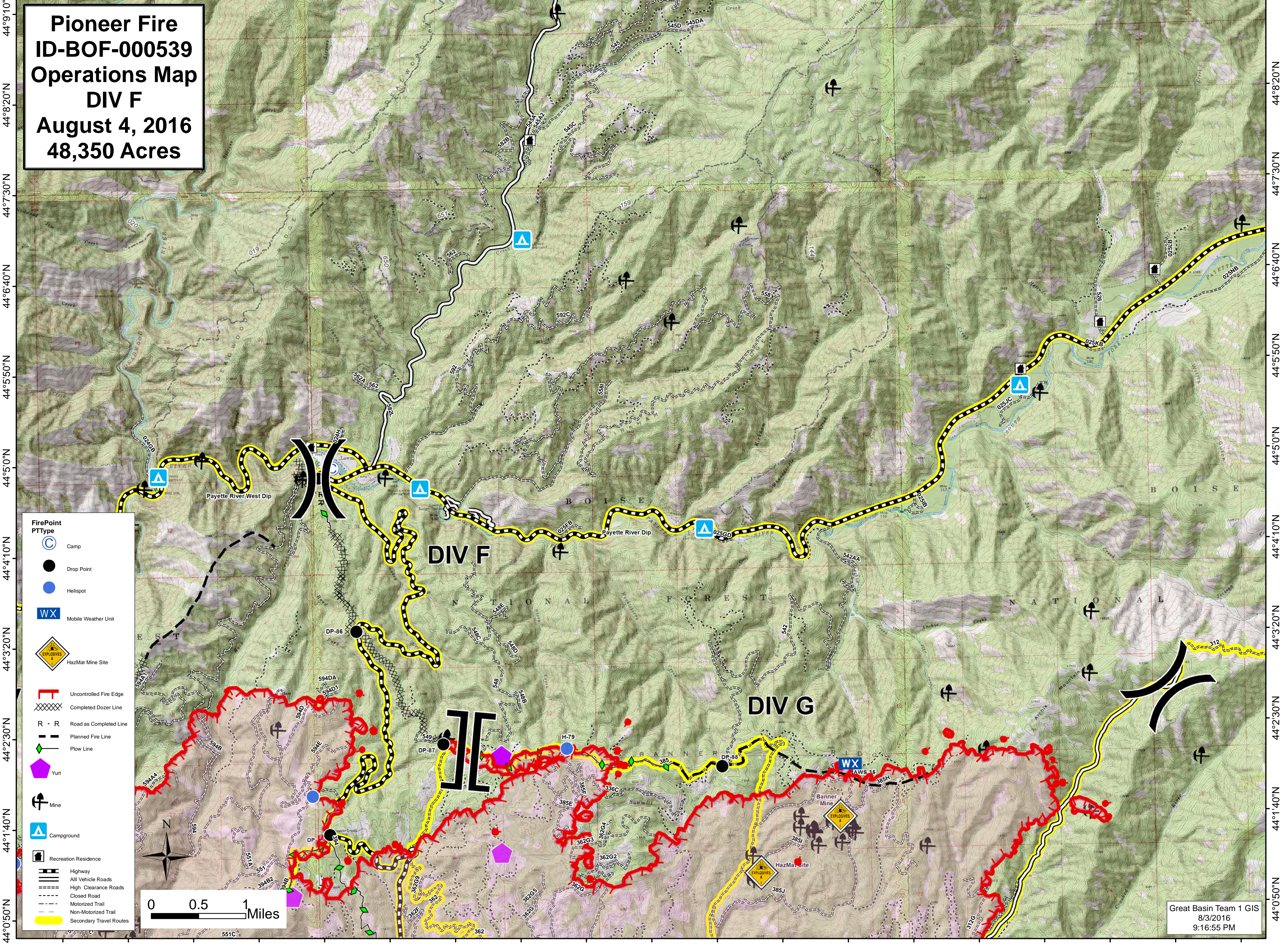


115°40'50"W 115°40'0"W 115°39'10"W 115°38'20"W 115°37'30"W 115°36'40"W 115°35'50"W 115°35'0"W 115°34'10"W 115°33'20"W 115°32'30"W 115°31'40"W 115°30'50"W 115°30'0"W 115°29'10"W 115°28'20"W 115°27'30"W 115°26'40"W 115°25'50"W

**Pioneer Fire
ID-BOF-000539
Operations Map
DIV F
August 4, 2016
48,350 Acres**



- FirePoint PType**
- Camp
 - Drop Point
 - Helispot
 - Mobile Weather Unit
 - HazMat Mine Site
 - Uncontrolled Fire Edge
 - Completed Dozer Line
 - Road as Completed Line
 - Planned Fire Line
 - Plow Line
 - Yurt
 - Mine
 - Campground
 - Recreation Residence
 - Highway
 - All Vehicle Roads
 - High Clearance Roads
 - Closed Road
 - Motorized Trail
 - Non-Motorized Trail
 - Secondary Travel Routes

0 0.5 1 Miles

Great Basin Team 1 GIS
8/3/2016
9:16:55 PM