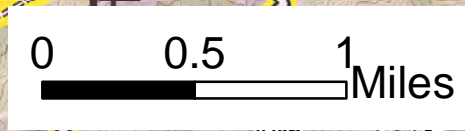
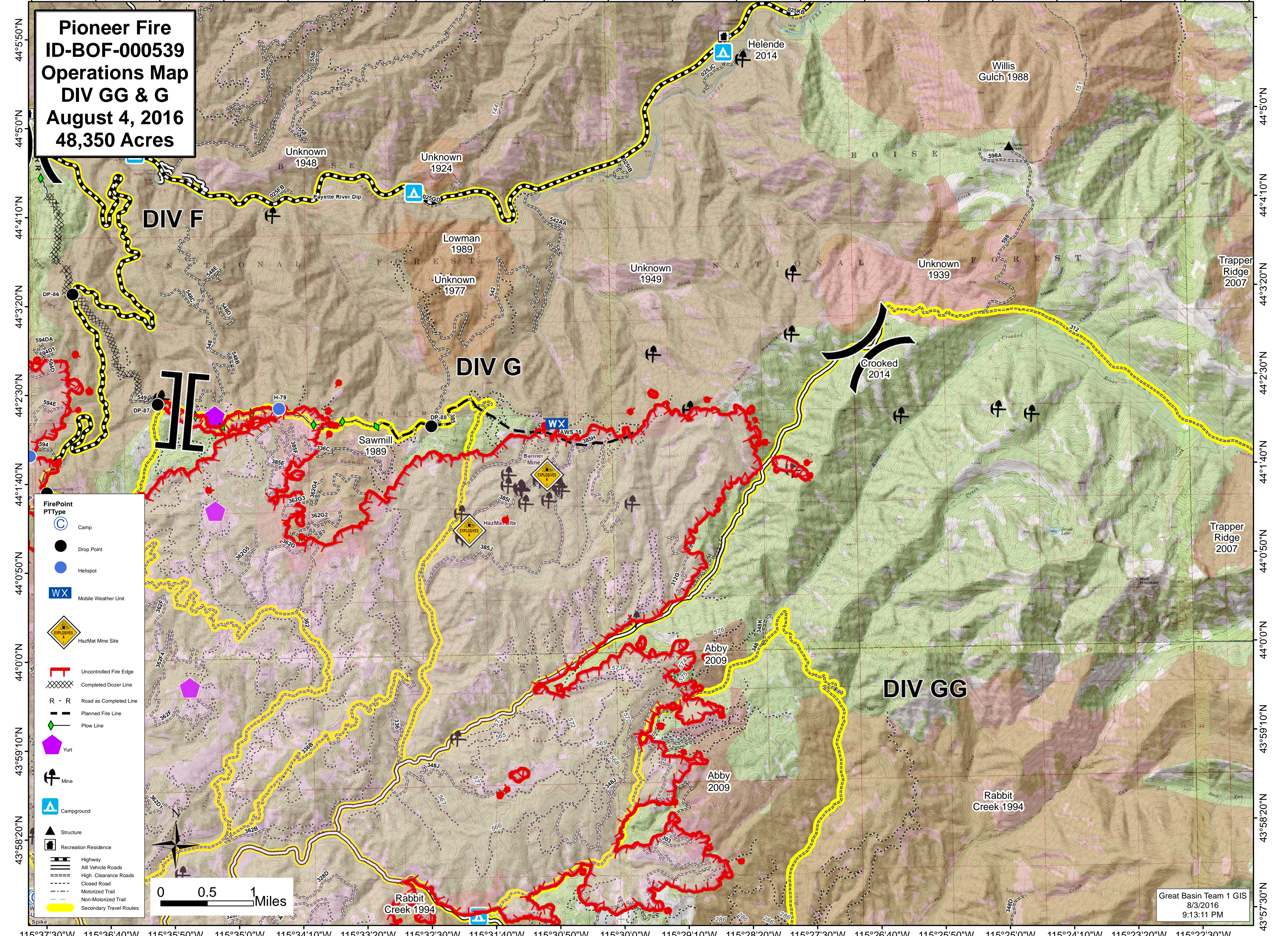


115°37'30"W 115°36'40"W 115°35'50"W 115°35'00"W 115°34'10"W 115°33'20"W 115°32'30"W 115°31'40"W 115°30'50"W 115°30'00"W 115°29'10"W 115°28'20"W 115°27'30"W 115°26'40"W 115°25'50"W 115°25'00"W 115°24'10"W 115°23'20"W 115°22'30"W 115°21'40"W

**Pioneer Fire  
ID-BOF-000539  
Operations Map  
DIV GG & G  
August 4, 2016  
48,350 Acres**



Great Basin Team 1 GIS  
8/3/2016  
9:13:11 PM

115°37'30"W 115°36'40"W 115°35'50"W 115°35'00"W 115°34'10"W 115°33'20"W 115°32'30"W 115°31'40"W 115°30'50"W 115°30'00"W 115°29'10"W 115°28'20"W 115°27'30"W 115°26'40"W 115°25'50"W 115°25'00"W 115°24'10"W 115°23'20"W 115°22'30"W 115°21'40"W