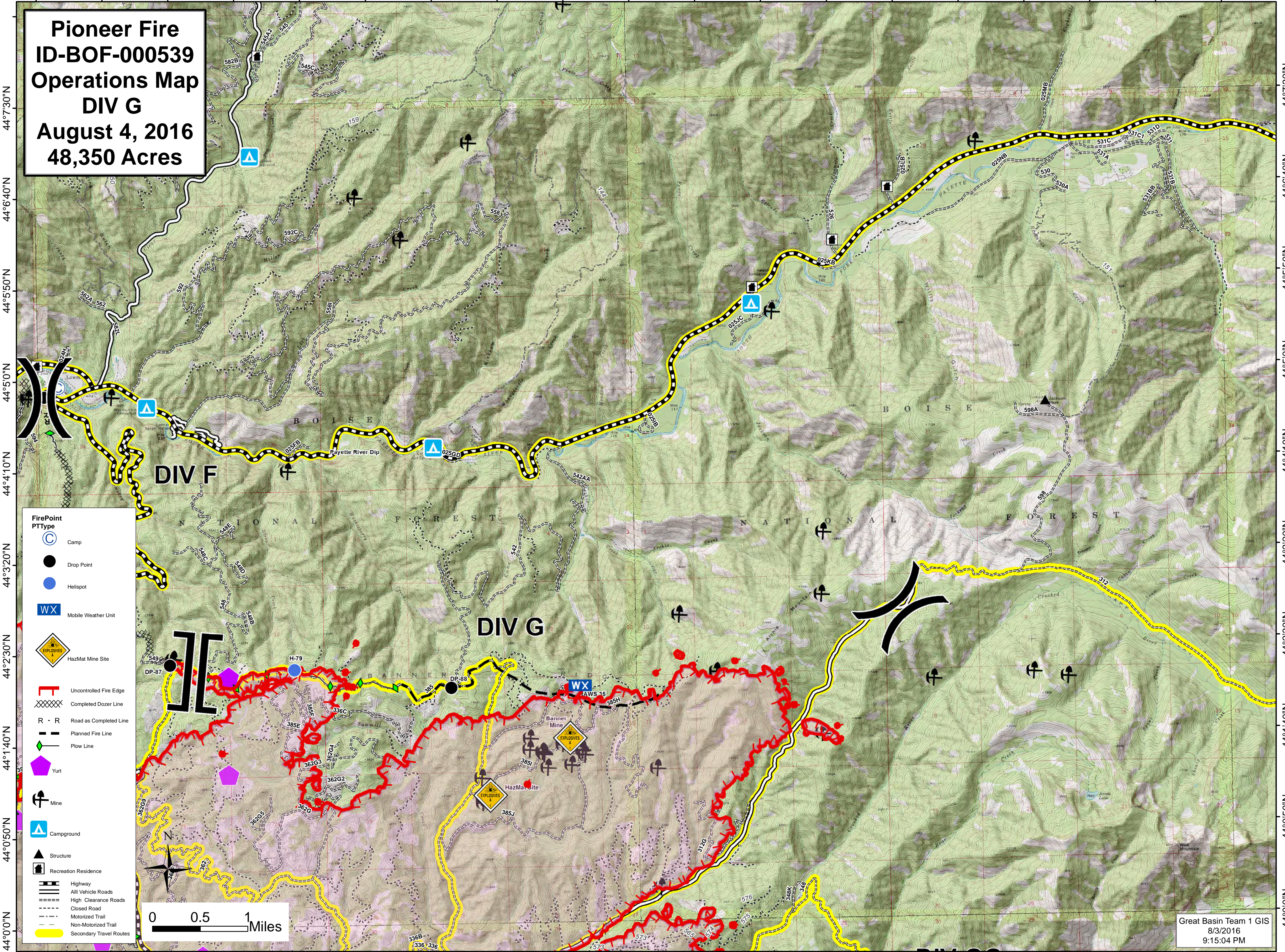
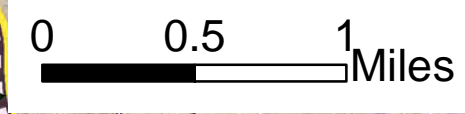


115°37'30"W 115°36'40"W 115°35'50"W 115°35'0"W 115°34'10"W 115°33'20"W 115°32'30"W 115°31'40"W 115°30'50"W 115°30'0"W 115°29'10"W 115°28'20"W 115°27'30"W 115°26'40"W 115°25'50"W 115°25'0"W 115°24'10"W 115°23'20"W 115°22'30"W



**Pioneer Fire**  
**ID-BOF-000539**  
**Operations Map**  
**DIV G**  
**August 4, 2016**  
**48,350 Acres**

- FirePoint PType**
- Camp
  - Drop Point
  - Hellspot
  - Mobile Weather Unit
  - HazMat Mine Site
- Fire Lines**
- Uncontrolled Fire Edge
  - Completed Dozer Line
  - Planned Fire Line
  - Plow Line
- Other Features**
- Yurt
  - Mine
  - Campground
  - Structure
  - Recreation Residence
  - Highway
  - All Vehicle Roads
  - High Clearance Roads
  - Closed Road
  - Motorized Trail
  - Non-Motorized Trail
  - Secondary Travel Routes



Great Basin Team 1 GIS  
8/3/2016  
9:15:04 PM

115°37'30"W 115°36'40"W 115°35'50"W 115°35'0"W 115°34'10"W 115°33'20"W 115°32'30"W 115°31'40"W 115°30'50"W 115°30'0"W 115°29'10"W 115°28'20"W 115°27'30"W 115°26'40"W 115°25'50"W 115°25'0"W 115°24'10"W 115°23'20"W 115°22'30"W