

115°43'20"W 115°42'30"W 115°41'40"W 115°40'50"W 115°40'0"W 115°39'10"W 115°38'20"W 115°37'30"W 115°36'40"W

Pioneer Fire ID-BOF-000539 Operations Map DIV I August 4, 2016 48,350 Acres

Mademoiselle Mine - Hole in Road

IRAWS 26
CMD 3

DP-90

Whoop-
Um-Up
Spike

DP-91

Sunset
Mtn
CMD 4

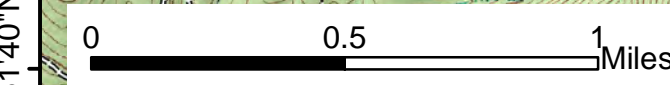
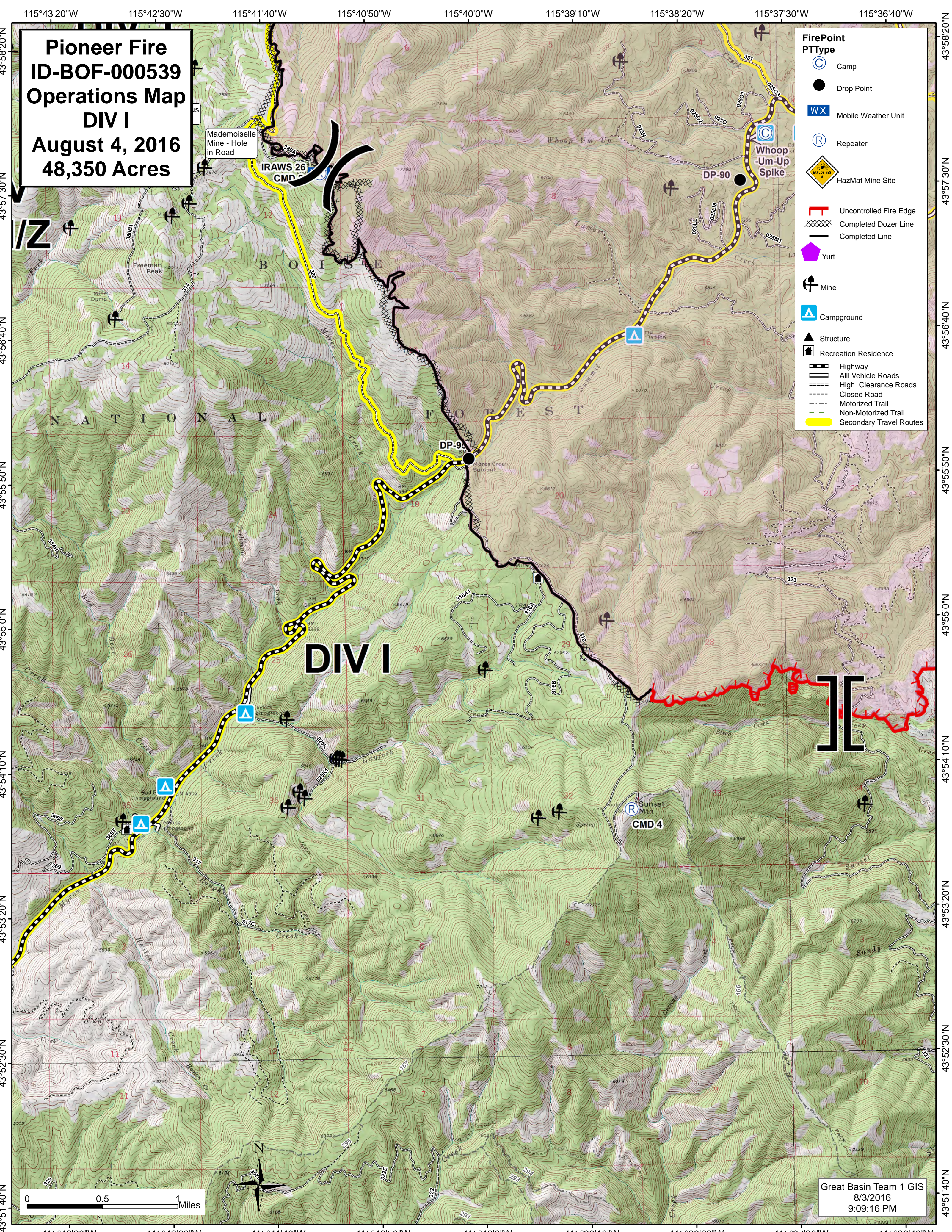
DIV I

**FirePoint
PTType**

-  Camp
-  Drop Point
-  Mobile Weather Unit
-  Repeater
-  HazMat Mine Site
-  Uncontrolled Fire Edge
-  Completed Dozer Line
-  Completed Line
-  Yurt
-  Mine
-  Campground
-  Structure
-  Recreation Residence
-  Highway
-  All Vehicle Roads
-  High Clearance Roads
-  Closed Road
-  Motorized Trail
-  Non-Motorized Trail
-  Secondary Travel Routes

I

J



Great Basin Team 1 GIS
8/3/2016
9:09:16 PM

115°43'20"W 115°42'30"W 115°41'40"W 115°40'50"W 115°40'0"W 115°39'10"W 115°38'20"W 115°37'30"W 115°36'40"W

43°58'20"N 43°57'30"N 43°56'40"N 43°55'50"N 43°55'0"N 43°54'10"N 43°53'20"N 43°52'30"N 43°51'40"N

43°58'20"N 43°57'30"N 43°56'40"N 43°55'50"N 43°55'0"N 43°54'10"N 43°53'20"N 43°52'30"N 43°51'40"N