

115°45'50"W 115°45'0"W 115°44'10"W 115°43'20"W 115°42'30"W 115°41'40"W 115°40'50"W 115°40'0"W 115°39'10"W

**Pioneer Fire**  
**ID-BOF-000539**  
**Operations Map**  
**DIV J**  
**August 4, 2016**  
**48,350 Acres**

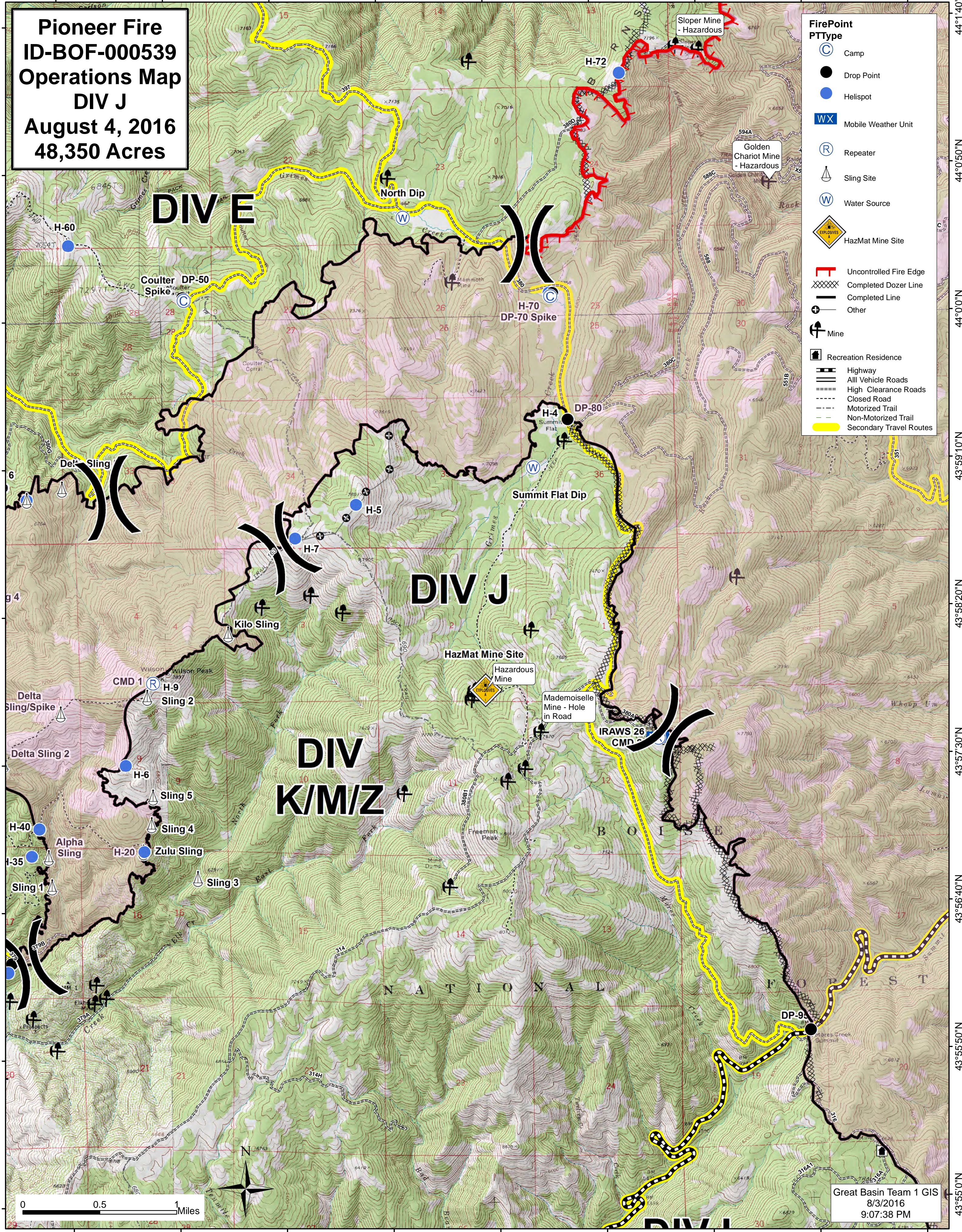
- FirePoint**  
**PTType**
- Camp
  - Drop Point
  - Helispot
  - Mobile Weather Unit
  - Repeater
  - Sling Site
  - Water Source
  - HazMat Mine Site
  - Uncontrolled Fire Edge
  - Completed Dozer Line
  - Completed Line
  - Other
  - Mine
  - Recreation Residence
  - Highway
  - All Vehicle Roads
  - High Clearance Roads
  - Closed Road
  - Motorized Trail
  - Non-Motorized Trail
  - Secondary Travel Routes

**DIV E**

**DIV J**

**DIV K/M/Z**

NATIONAL FOREST



Great Basin Team 1 GIS  
8/3/2016  
9:07:38 PM

115°45'50"W 115°45'0"W 115°44'10"W 115°43'20"W 115°42'30"W 115°41'40"W 115°40'50"W 115°40'0"W 115°39'10"W