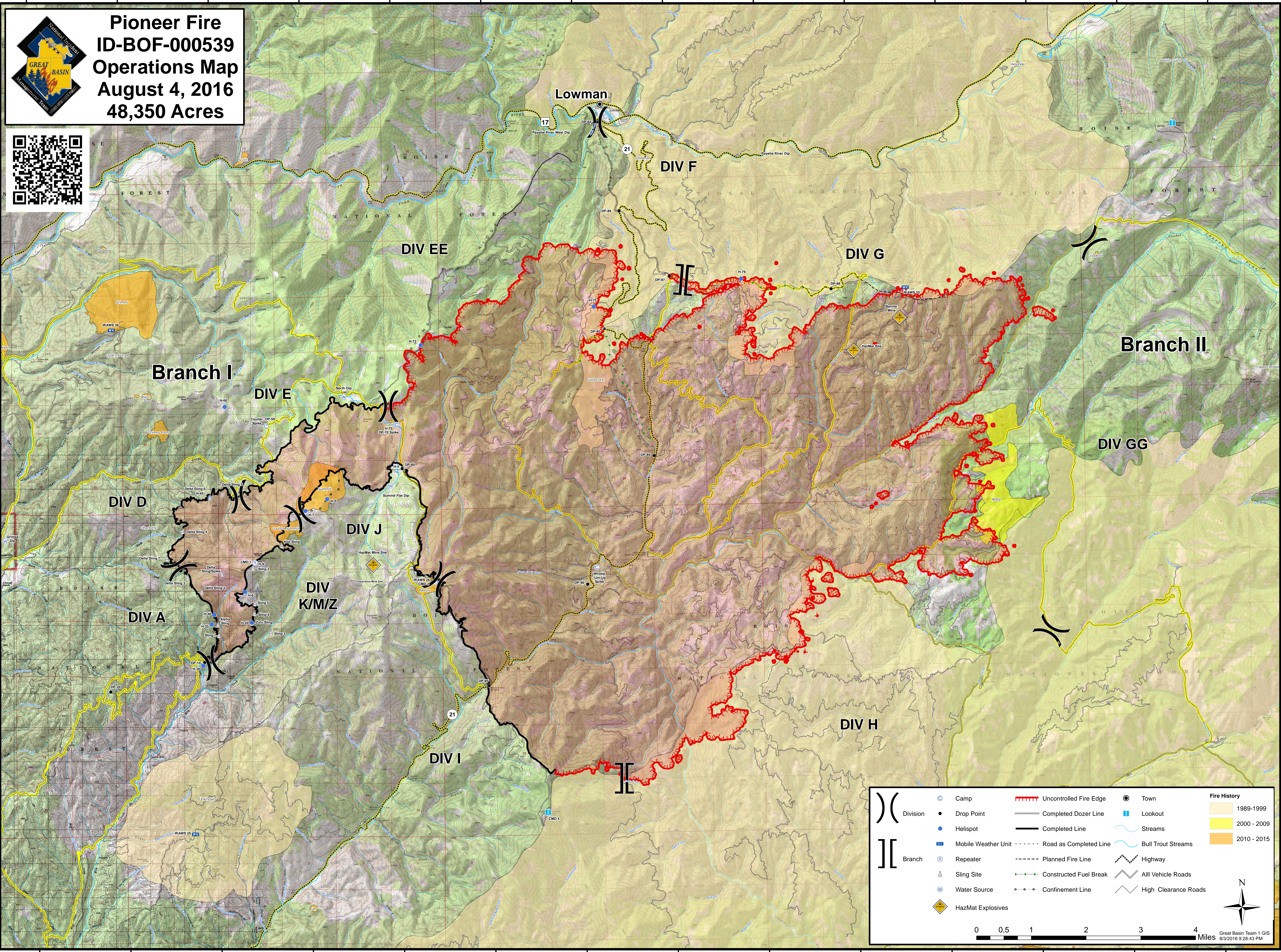


115°50'0"W 115°48'0"W 115°46'0"W 115°44'0"W 115°42'0"W 115°40'0"W 115°38'0"W 115°36'0"W 115°34'0"W 115°32'0"W 115°30'0"W 115°28'0"W 115°26'0"W 115°24'0"W

Pioneer Fire
ID-BOF-000539
Operations Map
August 4, 2016
48,350 Acres



115°50'0"W 115°48'0"W 115°46'0"W 115°44'0"W 115°42'0"W 115°40'0"W 115°38'0"W 115°36'0"W 115°34'0"W 115°32'0"W 115°30'0"W 115°28'0"W 115°26'0"W 115°24'0"W

44°6'0"N 44°4'0"N 44°2'0"N 44°0'0"N 43°58'0"N 43°56'0"N 43°54'0"N 43°52'0"N

	Division		Camp		Uncontrolled Fire Edge		Town	Fire History	
	Branch		Drop Point		Completed Dozer Line		Lookout		1989-1999
			Helispot		Completed Line		Streams		2000 - 2009
			Mobile Weather Unit		Planned Fire Line		Bull Trout Streams		2010 - 2015
			Repeater		Road as Completed Line		Highway		
			Sling Site		Constructed Fuel Break		All Vehicle Roads		
			Water Source		Confinement Line		High Clearance Roads		
			HazMat Explosives						

0 0.5 1 2 3 4 Miles

Great Basin Team 1 GIS 8/3/2016 9:28:43 PM