

115°32'W

115°30'W

115°28'W

115°26'W

Pioneer Fire
ID-BOF-000539
IAP Map
Page 9
August 4, 2016
48,350 Acres

Branch II

44°3'N

44°3'N

44°2'N

44°2'N

44°1'N

44°1'N

44°0'N

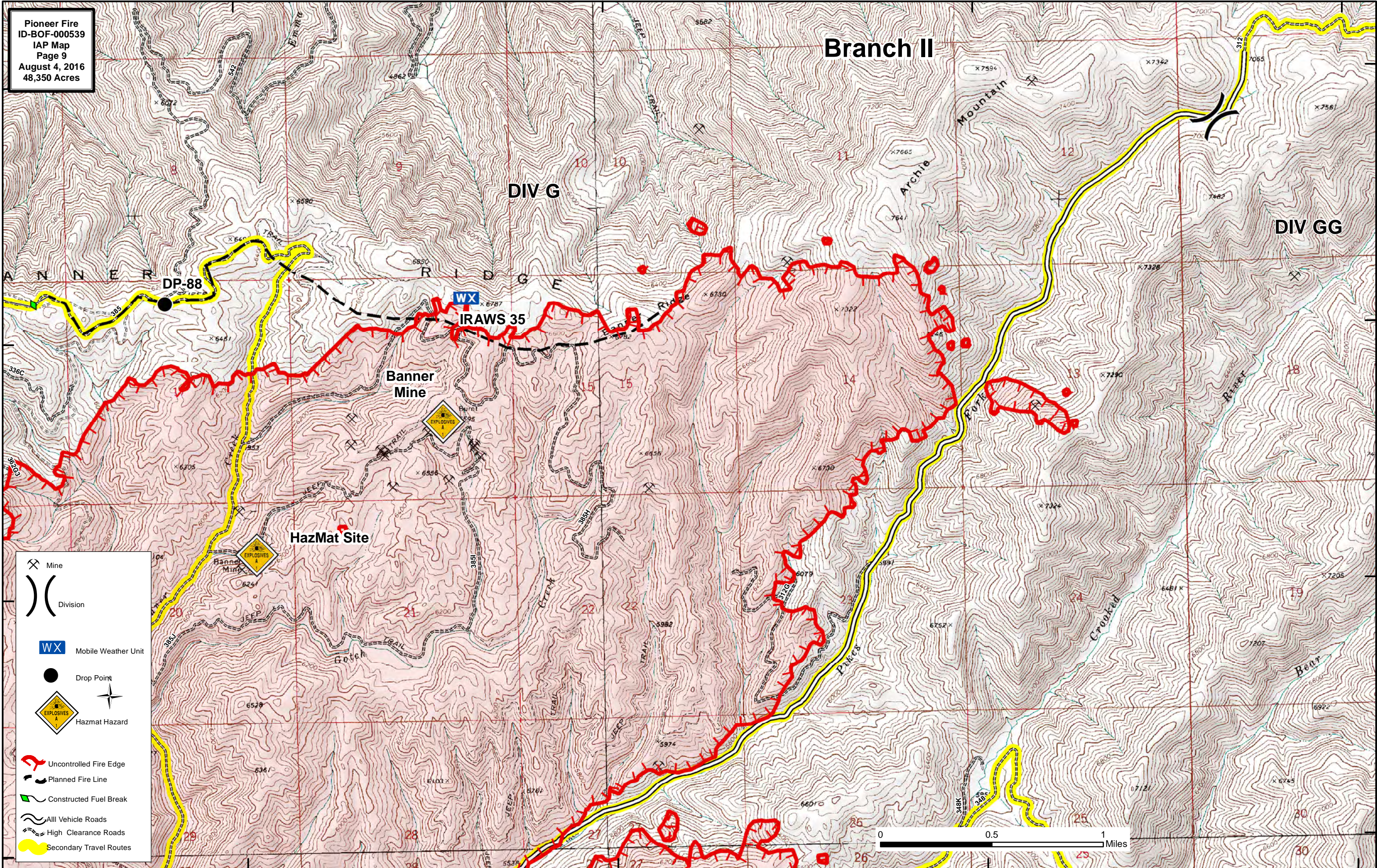
44°0'N

115°32'W

115°30'W

115°28'W

115°26'W



- Mine
- Division
- Mobile Weather Unit
- Drop Point
- Hazmat Hazard
- Uncontrolled Fire Edge
- Planned Fire Line
- Constructed Fuel Break
- All Vehicle Roads
- High Clearance Roads
- Secondary Travel Routes

