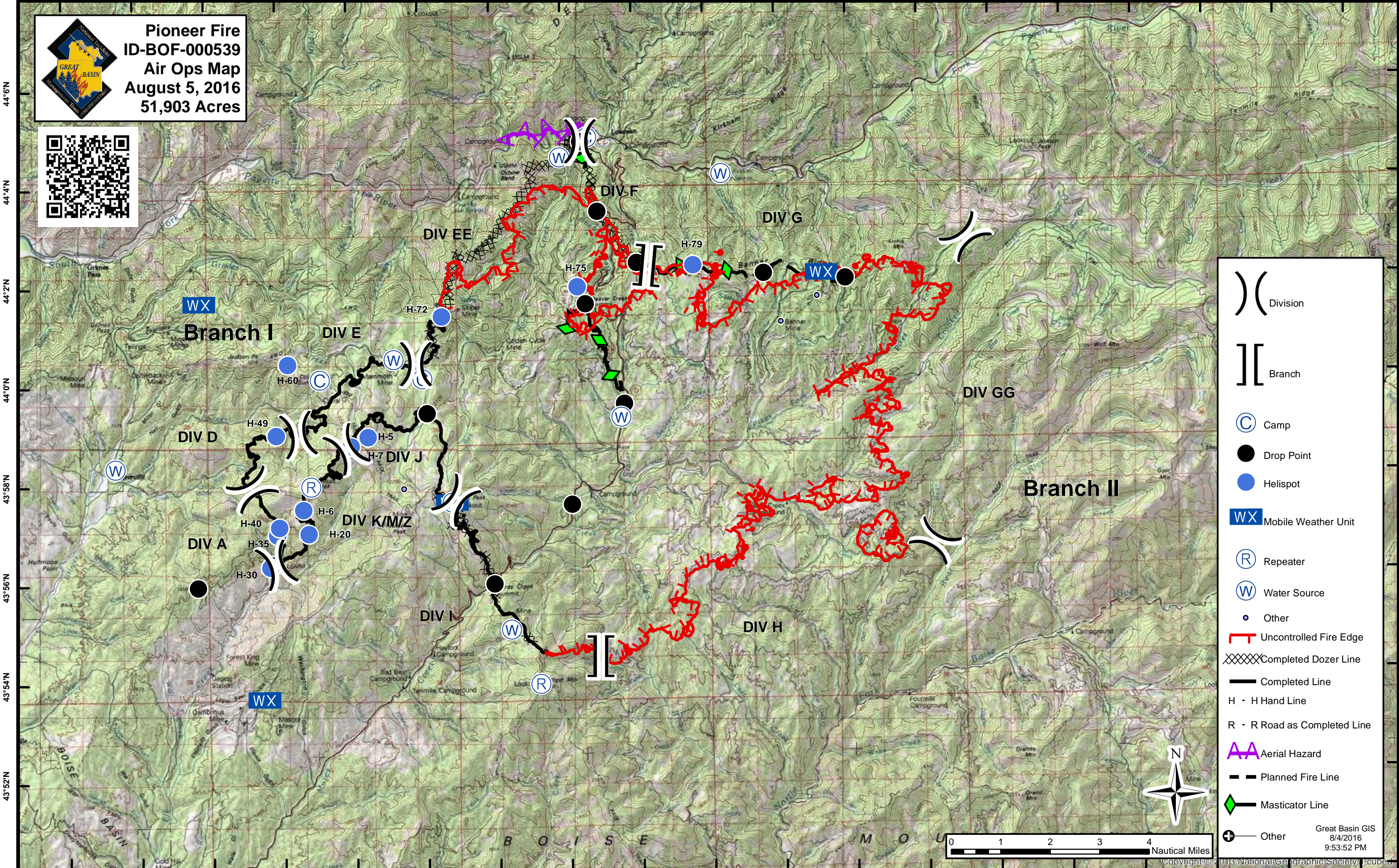


115°52'W 115°50'W 115°48'W 115°46'W 115°44'W 115°42'W 115°40'W 115°38'W 115°36'W 115°34'W 115°32'W 115°30'W 115°28'W 115°26'W 115°24'W 115°22'W 115°20'W 115°18'W 115°16'W

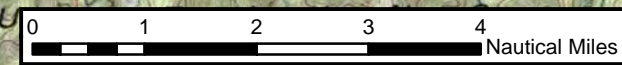


**Pioneer Fire**  
**ID-BOF-000539**  
**Air Ops Map**  
**August 5, 2016**  
**51,903 Acres**



) ( Division  
 ] [ Branch  
 (C) Camp  
 ● Drop Point  
 ● Helispot  
 WX Mobile Weather Unit  
 (R) Repeater  
 (W) Water Source  
 ● Other  
 [Red Line] Uncontrolled Fire Edge  
 [Cross-hatched] Completed Dozer Line  
 [Black Line] Completed Line  
 H - H Hand Line  
 R - R Road as Completed Line  
 [Purple Zig-zag] Aerial Hazard  
 [Dashed] Planned Fire Line  
 [Green Arrow] Masticator Line  
 [Cross] Other

Great Basin GIS  
 8/4/2016  
 9:53:52 PM



115°52'W 115°50'W 115°48'W 115°46'W 115°44'W 115°42'W 115°40'W 115°38'W 115°36'W 115°34'W 115°32'W 115°30'W 115°28'W 115°26'W 115°24'W 115°22'W 115°20'W 115°18'W 115°16'W

44°6'N 44°4'N 44°2'N 44°0'N 43°58'N 43°56'N 43°54'N 43°52'N 43°50'N

44°6'N 44°4'N 44°2'N 44°0'N 43°58'N 43°56'N 43°54'N 43°52'N 43°50'N