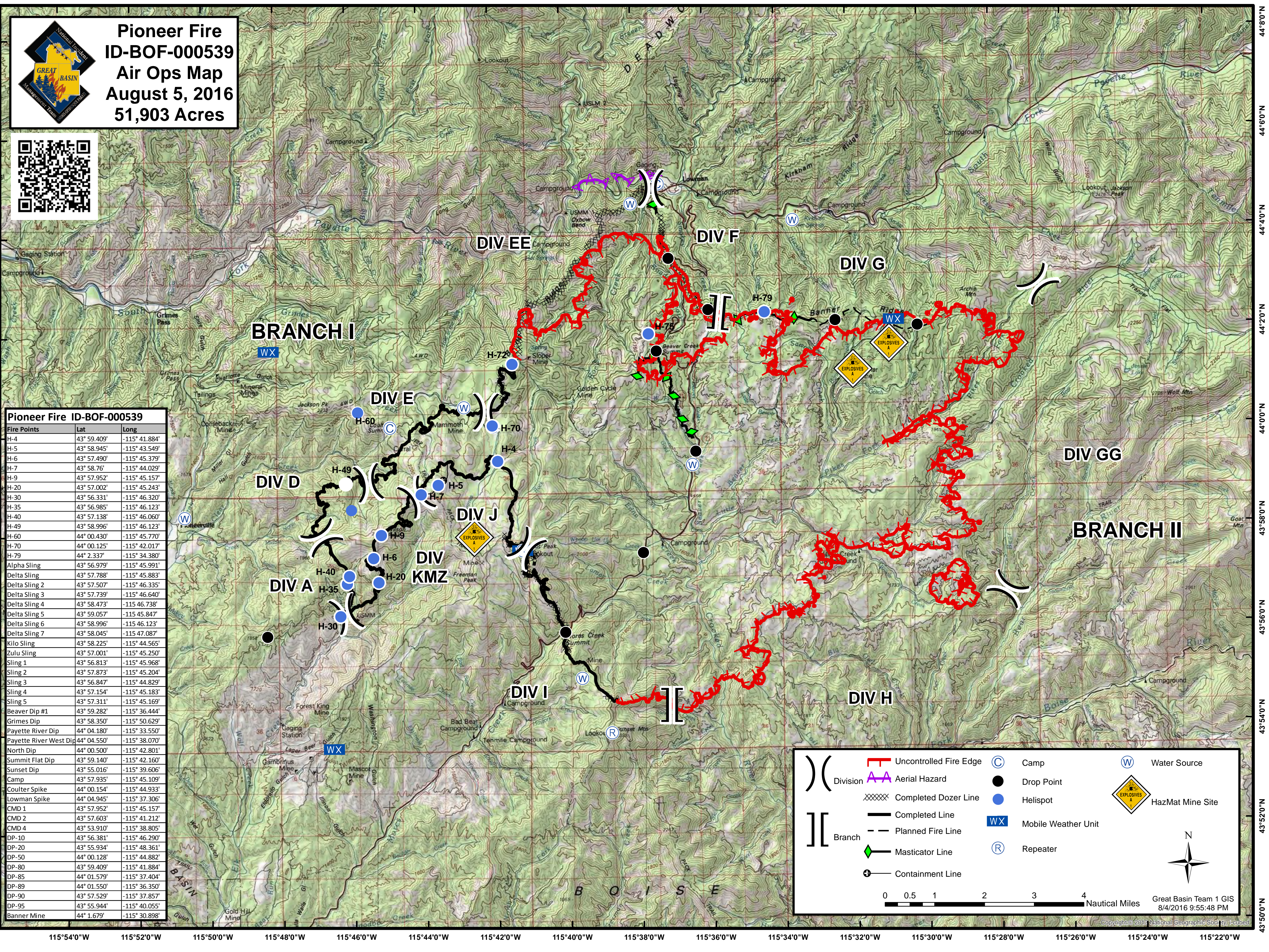




**Pioneer Fire**  
**ID-BOF-000539**  
**Air Ops Map**  
**August 5, 2016**  
**51,903 Acres**



Fire Points	Lat	Long
H-4	43° 59.409'	-115° 41.884'
H-5	43° 58.945'	-115° 43.549'
H-6	43° 57.490'	-115° 45.379'
H-7	43° 58.76'	-115° 44.029'
H-9	43° 57.952'	-115° 45.157'
H-20	43° 57.002'	-115° 45.243'
H-30	43° 56.331'	-115° 46.320'
H-35	43° 56.985'	-115° 46.123'
H-40	43° 57.138'	-115° 46.060'
H-49	43° 58.996'	-115° 46.123'
H-60	44° 00.430'	-115° 45.770'
H-70	44° 00.125'	-115° 42.017'
H-79	44° 2.337'	-115° 34.380'
Alpha Sling	43° 56.979'	-115° 45.991'
Delta Sling	43° 57.788'	-115° 45.883'
Delta Sling 2	43° 57.507'	-115° 46.335'
Delta Sling 3	43° 57.739'	-115° 46.640'
Delta Sling 4	43° 58.473'	-115° 46.738'
Delta Sling 5	43° 59.057'	-115° 45.847'
Delta Sling 6	43° 58.996'	-115° 46.123'
Delta Sling 7	43° 58.045'	-115° 47.087'
Kilo Sling	43° 58.225'	-115° 44.565'
Zulu Sling	43° 57.001'	-115° 45.250'
Sling 1	43° 56.813'	-115° 45.968'
Sling 2	43° 57.873'	-115° 45.204'
Sling 3	43° 56.847'	-115° 44.829'
Sling 4	43° 57.154'	-115° 45.183'
Sling 5	43° 57.311'	-115° 45.169'
Beaver Dip #1	43° 59.282'	-115° 36.444'
Grimes Dip	43° 58.350'	-115° 50.629'
Payette River Dip	44° 04.180'	-115° 33.550'
Payette River West Dip	44° 04.550'	-115° 38.070'
North Dip	44° 00.500'	-115° 42.801'
Summit Flat Dip	43° 59.140'	-115° 42.160'
Sunset Dip	43° 55.016'	-115° 39.606'
Camp	43° 57.935'	-115° 45.109'
Coulter Spike	44° 00.154'	-115° 44.933'
Lowman Spike	44° 04.945'	-115° 37.306'
CMD 1	43° 57.952'	-115° 45.157'
CMD 2	43° 57.603'	-115° 41.212'
CMD 4	43° 53.910'	-115° 38.805'
DP-10	43° 56.381'	-115° 46.290'
DP-20	43° 55.934'	-115° 48.361'
DP-50	44° 00.128'	-115° 44.882'
DP-80	43° 59.409'	-115° 41.884'
DP-85	44° 01.579'	-115° 37.404'
DP-89	44° 01.550'	-115° 36.350'
DP-90	43° 57.529'	-115° 37.857'
DP-95	43° 55.944'	-115° 40.055'
Banner Mine	44° 1.679'	-115° 30.898'



	Uncontrolled Fire Edge		Camp		Water Source
	Division		Drop Point		HazMat Mine Site
	Aerial Hazard		Helispot		Mobile Weather Unit
	Completed Dozer Line		Repeater		
	Branch				
	Completed Line				
	Planned Fire Line				
	Masticator Line				
	Containment Line				

0 0.5 1 2 3 4 Nautical Miles

Great Basin Team 1 GIS  
8/4/2016 9:55:48 PM