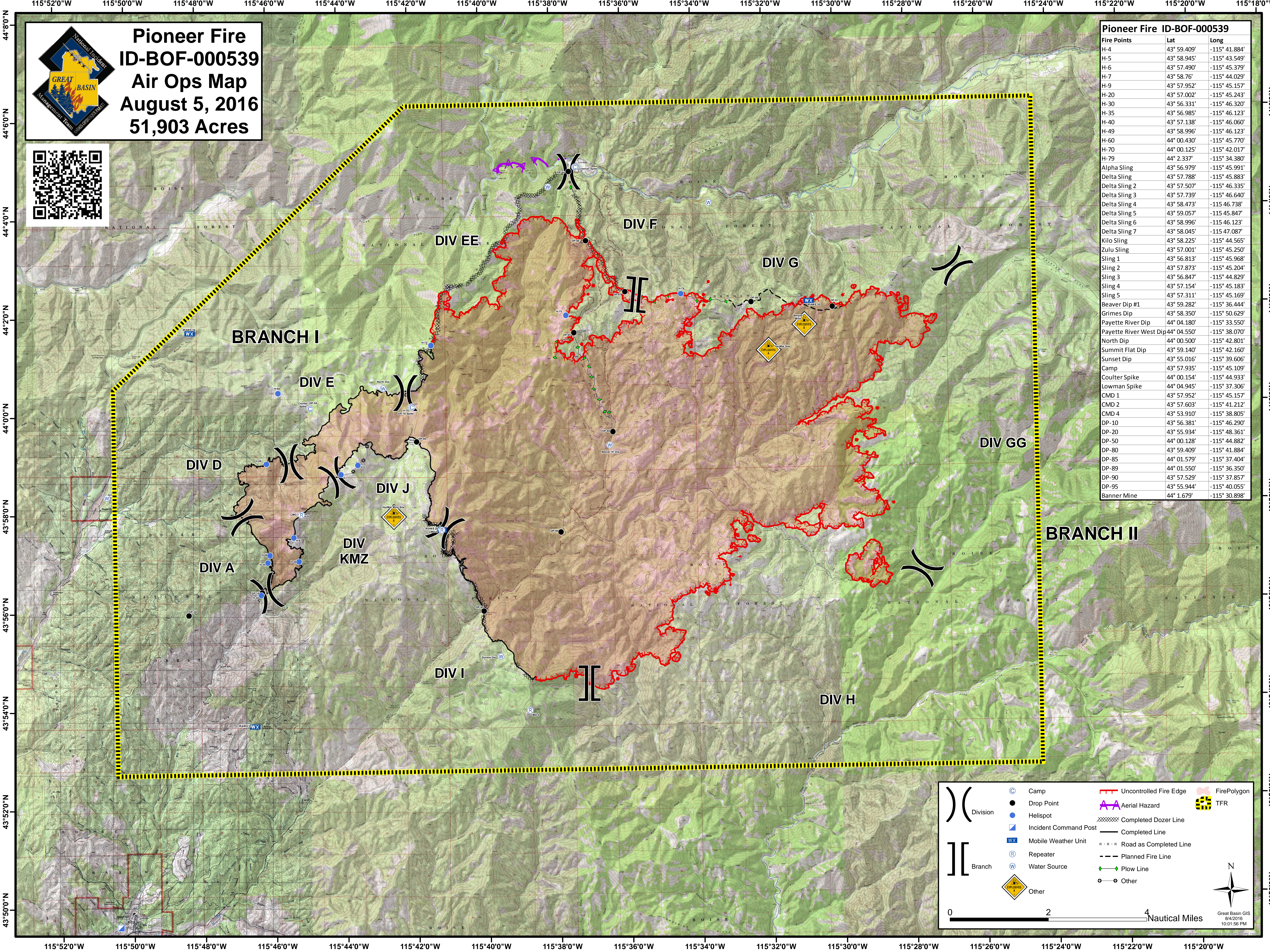




Pioneer Fire
ID-BOF-000539
Air Ops Map
August 5, 2016
51,903 Acres



| Pioneer Fire ID-BOF-000539 | | |
|----------------------------|-------------|---------------|
| Fire Points | Lat | Long |
| H-4 | 43° 59.409' | -115° 41.884' |
| H-5 | 43° 58.945' | -115° 43.549' |
| H-6 | 43° 57.490' | -115° 45.379' |
| H-7 | 43° 58.76' | -115° 44.029' |
| H-9 | 43° 57.952' | -115° 45.157' |
| H-20 | 43° 57.002' | -115° 45.243' |
| H-30 | 43° 56.331' | -115° 46.320' |
| H-35 | 43° 56.985' | -115° 46.123' |
| H-40 | 43° 57.138' | -115° 46.060' |
| H-49 | 43° 58.996' | -115° 46.123' |
| H-60 | 44° 00.430' | -115° 45.770' |
| H-70 | 44° 00.125' | -115° 42.017' |
| H-79 | 44° 2.337' | -115° 34.380' |
| Alpha Sling | 43° 56.979' | -115° 45.991' |
| Delta Sling | 43° 57.788' | -115° 45.883' |
| Delta Sling 2 | 43° 57.507' | -115° 46.335' |
| Delta Sling 3 | 43° 57.739' | -115° 46.640' |
| Delta Sling 4 | 43° 58.473' | -115° 46.738' |
| Delta Sling 5 | 43° 59.057' | -115° 45.847' |
| Delta Sling 6 | 43° 58.996' | -115° 46.123' |
| Delta Sling 7 | 43° 58.045' | -115° 47.087' |
| Kilo Sling | 43° 58.225' | -115° 44.565' |
| Zulu Sling | 43° 57.001' | -115° 45.250' |
| Sling 1 | 43° 56.813' | -115° 45.968' |
| Sling 2 | 43° 57.873' | -115° 45.204' |
| Sling 3 | 43° 56.847' | -115° 44.829' |
| Sling 4 | 43° 57.154' | -115° 45.183' |
| Sling 5 | 43° 57.311' | -115° 45.169' |
| Beaver Dip #1 | 43° 59.282' | -115° 36.444' |
| Grimes Dip | 43° 58.350' | -115° 50.629' |
| Payette River Dip | 44° 04.180' | -115° 33.550' |
| Payette River West Dip | 44° 04.550' | -115° 38.070' |
| North Dip | 44° 00.500' | -115° 42.801' |
| Summit Flat Dip | 43° 59.140' | -115° 42.160' |
| Sunset Dip | 43° 55.016' | -115° 39.606' |
| Camp | 43° 57.935' | -115° 45.109' |
| Coulter Spike | 44° 00.154' | -115° 44.933' |
| Lowman Spike | 44° 04.945' | -115° 37.306' |
| CMD 1 | 43° 57.952' | -115° 45.157' |
| CMD 2 | 43° 57.603' | -115° 41.212' |
| CMD 4 | 43° 53.910' | -115° 38.805' |
| DP-10 | 43° 56.381' | -115° 46.290' |
| DP-20 | 43° 55.934' | -115° 48.361' |
| DP-50 | 44° 00.128' | -115° 44.882' |
| DP-80 | 43° 59.409' | -115° 41.884' |
| DP-85 | 44° 01.579' | -115° 37.404' |
| DP-89 | 44° 01.550' | -115° 36.350' |
| DP-90 | 43° 57.529' | -115° 37.857' |
| DP-95 | 43° 55.944' | -115° 40.055' |
| Banner Mine | 44° 1.679' | -115° 30.898' |



| | | | | | | | |
|--|-----------------------|--|------------------------|--|------------------------|--|--------------|
| | Division | | Camp | | Uncontrolled Fire Edge | | Fire Polygon |
| | Drop Point | | Helispot | | Aerial Hazard | | TFR |
| | Incident Command Post | | Completed Dozer Line | | Completed Line | | |
| | Mobile Weather Unit | | Road as Completed Line | | Planned Fire Line | | |
| | Repeater | | Plow Line | | Other | | |
| | Water Source | | | | | | |
| | Other | | | | | | |

0 2 4 Nautical Miles

Great Basin GIS
8/4/2016
10:01:56 PM