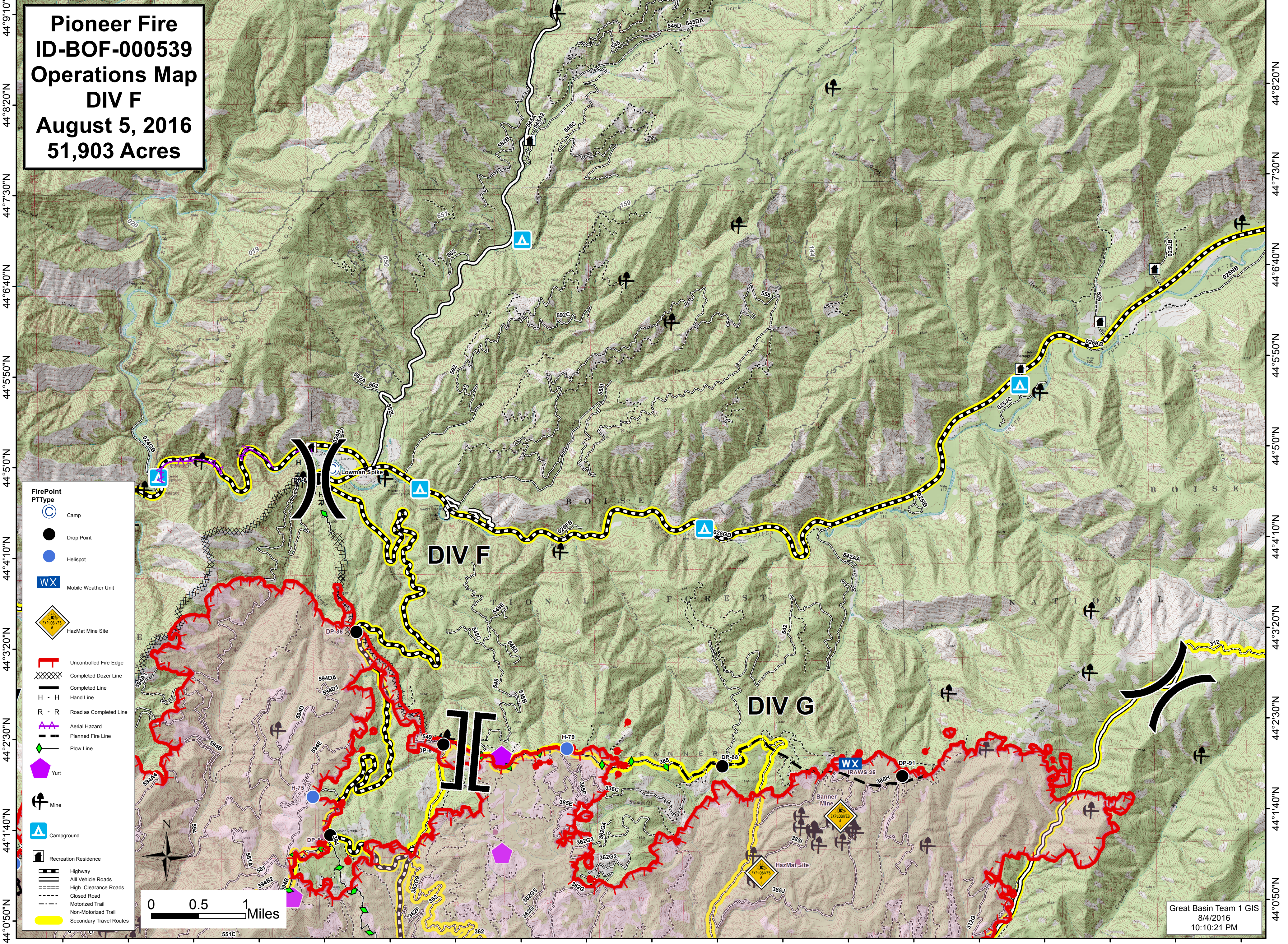
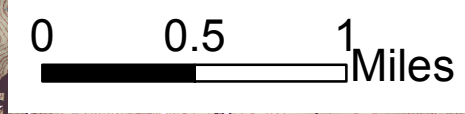


115°40'50"W 115°40'00"W 115°39'10"W 115°38'20"W 115°37'30"W 115°36'40"W 115°35'50"W 115°35'00"W 115°34'10"W 115°33'20"W 115°32'30"W 115°31'40"W 115°30'50"W 115°30'00"W 115°29'10"W 115°28'20"W 115°27'30"W 115°26'40"W 115°25'50"W

# Pioneer Fire ID-BOF-000539 Operations Map DIV F August 5, 2016 51,903 Acres



- FirePoint PType**
- Camp
  - Drop Point
  - Helispot
  - Mobile Weather Unit
  - HazMat Mine Site
  - Uncontrolled Fire Edge
  - Completed Dozer Line
  - Completed Line
  - Hand Line
  - Road as Completed Line
  - Aerial Hazard
  - Planned Fire Line
  - Flow Line
  - Yurt
  - Mine
  - Campground
  - Recreation Residence
  - Highway
  - All Vehicle Roads
  - High Clearance Roads
  - Closed Road
  - Motorized Trail
  - Non-Motorized Trail
  - Secondary Travel Routes



Great Basin Team 1 GIS  
8/4/2016  
10:10:21 PM