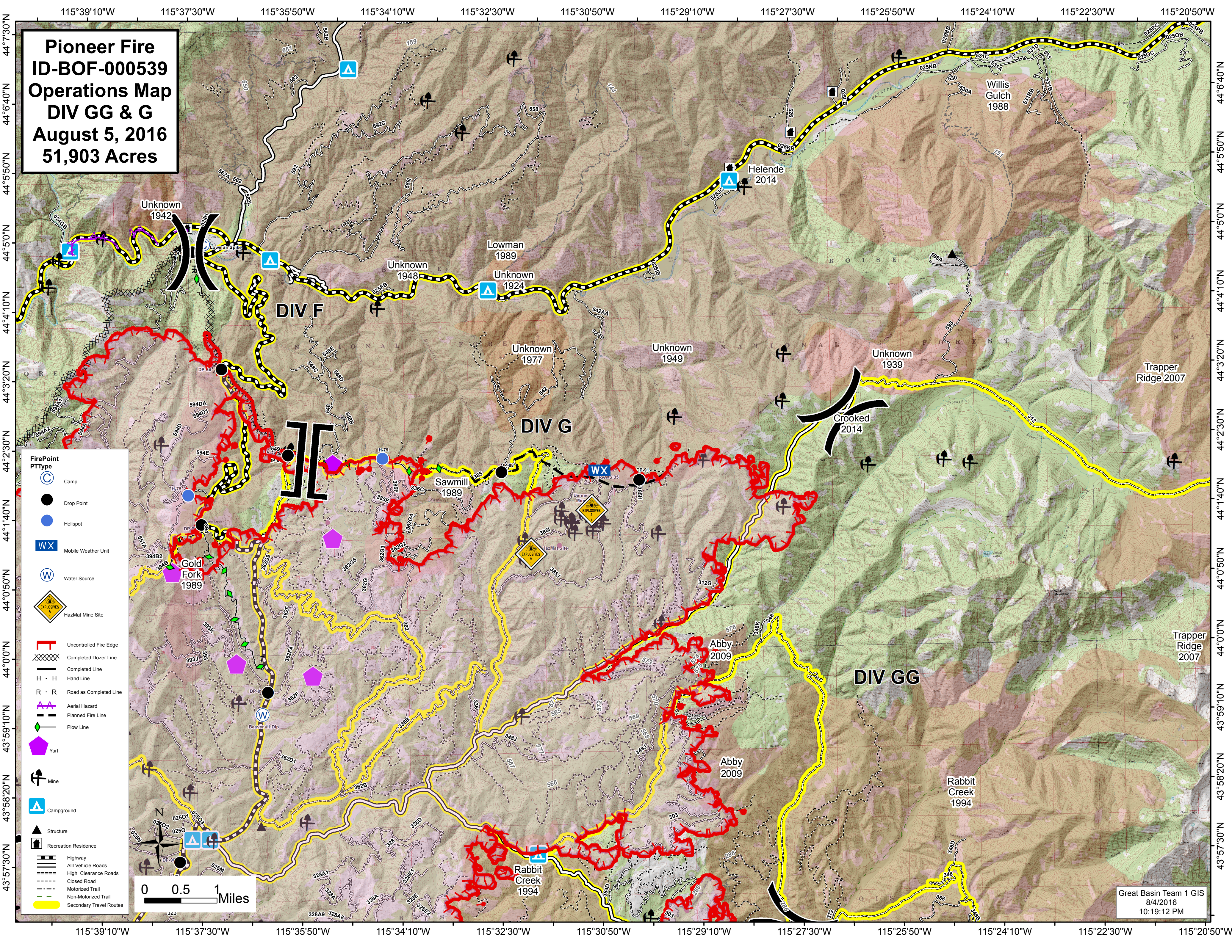
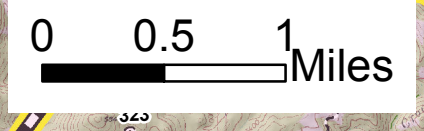


**Pioneer Fire
ID-BOF-000539
Operations Map
DIV GG & G
August 5, 2016
51,903 Acres**



- FirePoint
PTType**
- Camp
 - Drop Point
 - Helispot
 - Mobile Weather Unit
 - Water Source
 - HazMat Mine Site
 - Uncontrolled Fire Edge
 - Completed Dozer Line
 - Completed Line
 - Hand Line
 - Road as Completed Line
 - Aerial Hazard
 - Planned Fire Line
 - Plow Line
 - Yurt
 - Mine
 - Campground
 - Structure
 - Recreation Residence
 - Highway
 - All Vehicle Roads
 - High Clearance Roads
 - Closed Road
 - Motorized Trail
 - Non-Motorized Trail
 - Secondary Travel Routes



Great Basin Team 1 GIS
8/4/2016
10:19:12 PM