
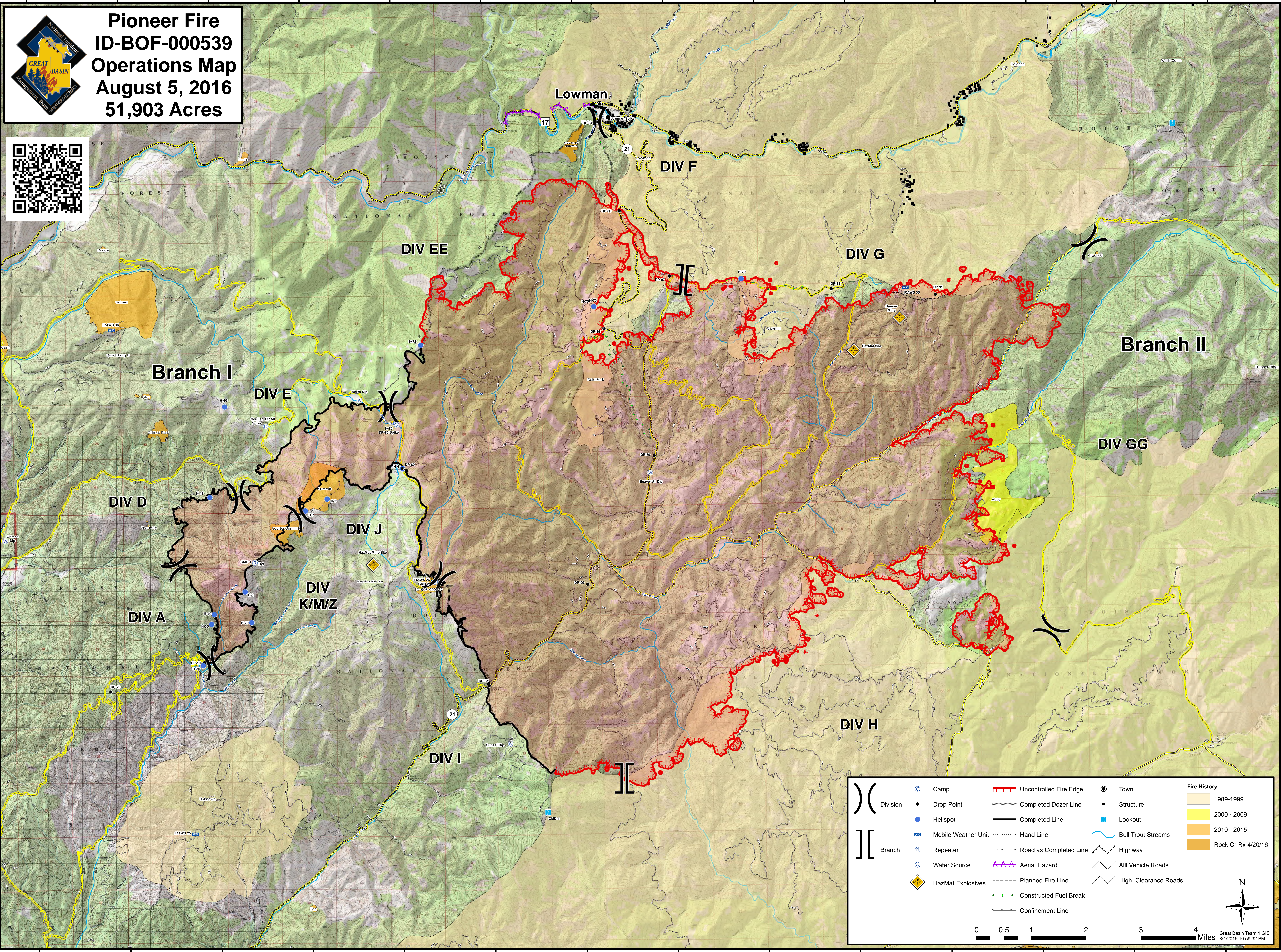


115°50'0"W 115°48'0"W 115°46'0"W 115°44'0"W 115°42'0"W 115°40'0"W 115°38'0"W 115°36'0"W 115°34'0"W 115°32'0"W 115°30'0"W 115°28'0"W 115°26'0"W 115°24'0"W

**Pioneer Fire**  
**ID-BOF-000539**  
**Operations Map**  
**August 5, 2016**  
**51,903 Acres**

115°50'0"W 115°48'0"W 115°46'0"W 115°44'0"W 115°42'0"W 115°40'0"W 115°38'0"W 115°36'0"W 115°34'0"W 115°32'0"W 115°30'0"W 115°28'0"W 115°26'0"W 115°24'0"W

	Division		Camp		Uncontrolled Fire Edge		Town		1989-1999
	Branch		Drop Point		Completed Dozer Line		Structure		2000 - 2009
			Helispot		Completed Line		Lookout		2010 - 2015
			Mobile Weather Unit		Hand Line		Bull Trout Streams		Rock Cr Rx 4/20/16
			Repeater		Road as Completed Line		Highway		
			Water Source		Aerial Hazard		All Vehicle Roads		
			HazMat Explosives		Planned Fire Line		High Clearance Roads		
					Constructed Fuel Break				
					Confinement Line				

0 0.5 1 2 3 4 Miles

Great Basin Team 1 GIS 8/4/2016 10:59:32 PM

44°6'0"N 44°4'0"N 44°2'0"N 44°0'0"N 43°58'0"N 43°56'0"N 43°54'0"N 43°52'0"N