

115°38'W

115°36'W

115°34'W

44°3'N

44°3'N

44°2'N

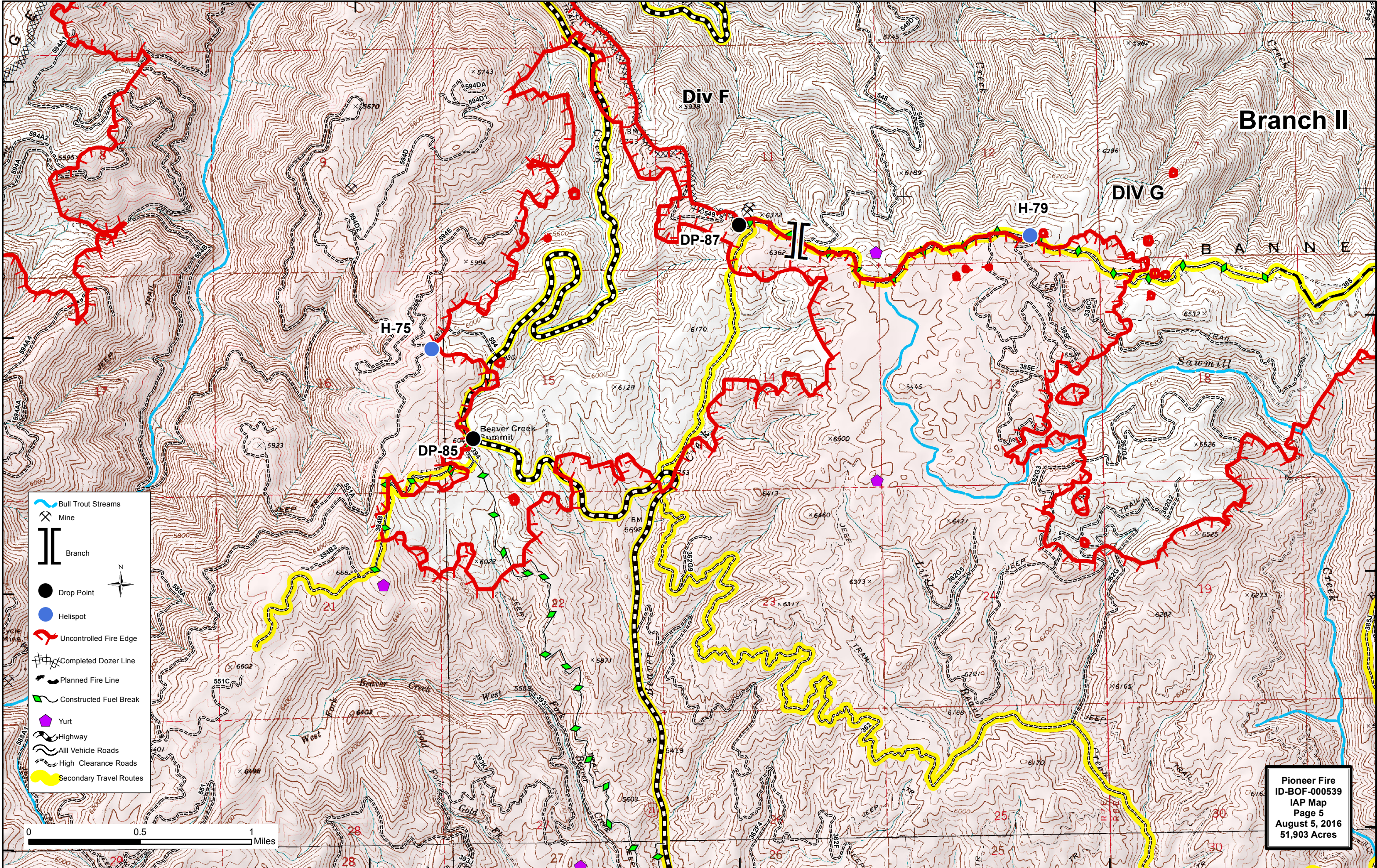
44°2'N

44°1'N

44°1'N

44°0'N

44°0'N



# Branch II

DIV G

Div F

H-79

H-75

DP-87

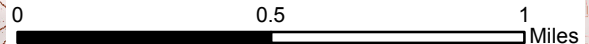
DP-85

Beaver Creek Summit

B A N N E R S

Sawmill

- Bull Trout Streams
- Mine
- Branch
- Drop Point
- Helispot
- Uncontrolled Fire Edge
- Completed Dozer Line
- Planned Fire Line
- Constructed Fuel Break
- Yurt
- Highway
- All Vehicle Roads
- High Clearance Roads
- Secondary Travel Routes



Pioneer Fire  
 ID-BOF-000539  
 IAP Map  
 Page 5  
 August 5, 2016  
 51,903 Acres

115°38'W

115°36'W

115°34'W