

115°32'W

115°30'W

115°28'W

115°26'W

44°3'N

44°2'N

44°1'N

44°0'N

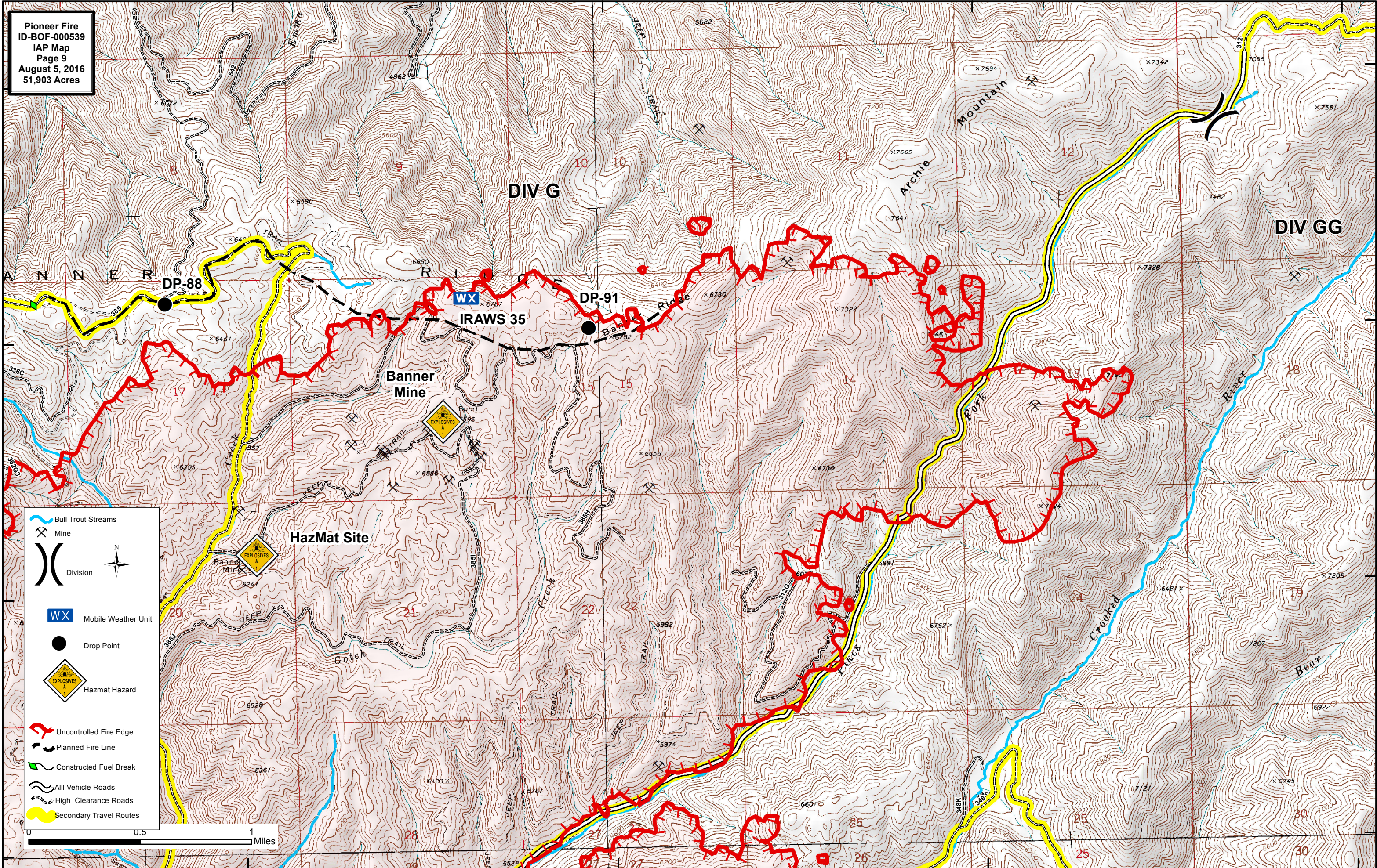
44°3'N

44°2'N

44°1'N

44°0'N

Pioneer Fire
 ID-BOF-000539
 IAP Map
 Page 9
 August 5, 2016
 51,903 Acres



- Bull Trout Streams
- Mine
- Division
- Mobile Weather Unit
- Drop Point
- Hazmat Hazard
- Uncontrolled Fire Edge
- Planned Fire Line
- Constructed Fuel Break
- All Vehicle Roads
- High Clearance Roads
- Secondary Travel Routes

0 0.5 1 Miles

115°32'W

115°30'W

115°28'W

115°26'W