

115°32'W

115°30'W

115°28'W

115°26'W

Pioneer Fire
 ID-BOF-000539
 IAP Map
 Page 10
 August 5, 2016
 51,903 Acres

44°0'N

44°0'N

43°59'N

43°59'N

43°58'N

43°58'N

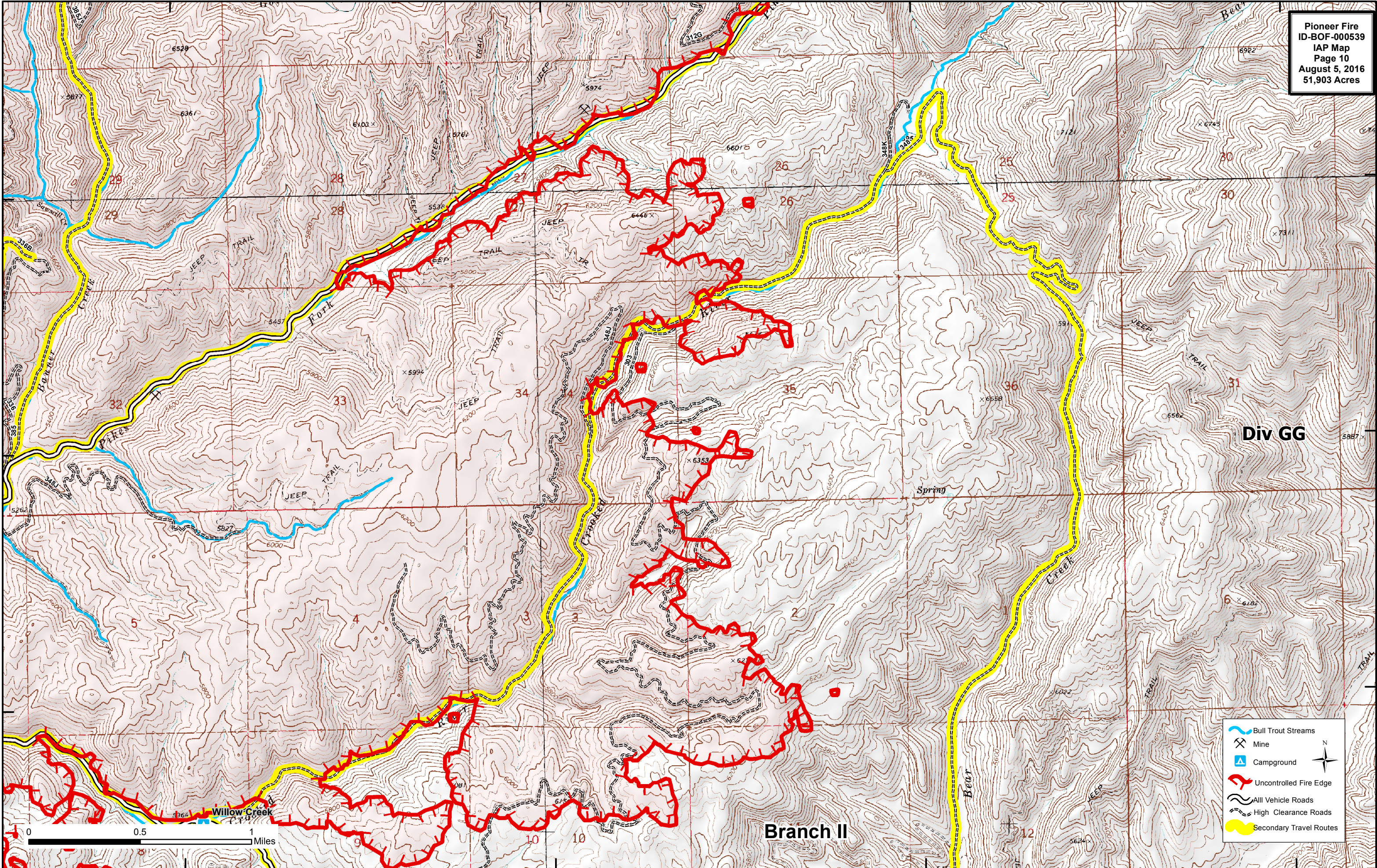
43°58'N

115°32'W

115°30'W

115°28'W

115°26'W



Div GG

Branch II

- Bull Trout Streams
- Mine
- Campground
- Uncontrolled Fire Edge
- All Vehicle Roads
- High Clearance Roads
- Secondary Travel Routes

