

115°34'W

115°32'W

115°30'W

115°28'W

Pioneer Fire
ID-BOF-000539
IAP Map
Page 11
August 5, 2016
51,903 Acres

43°58'N

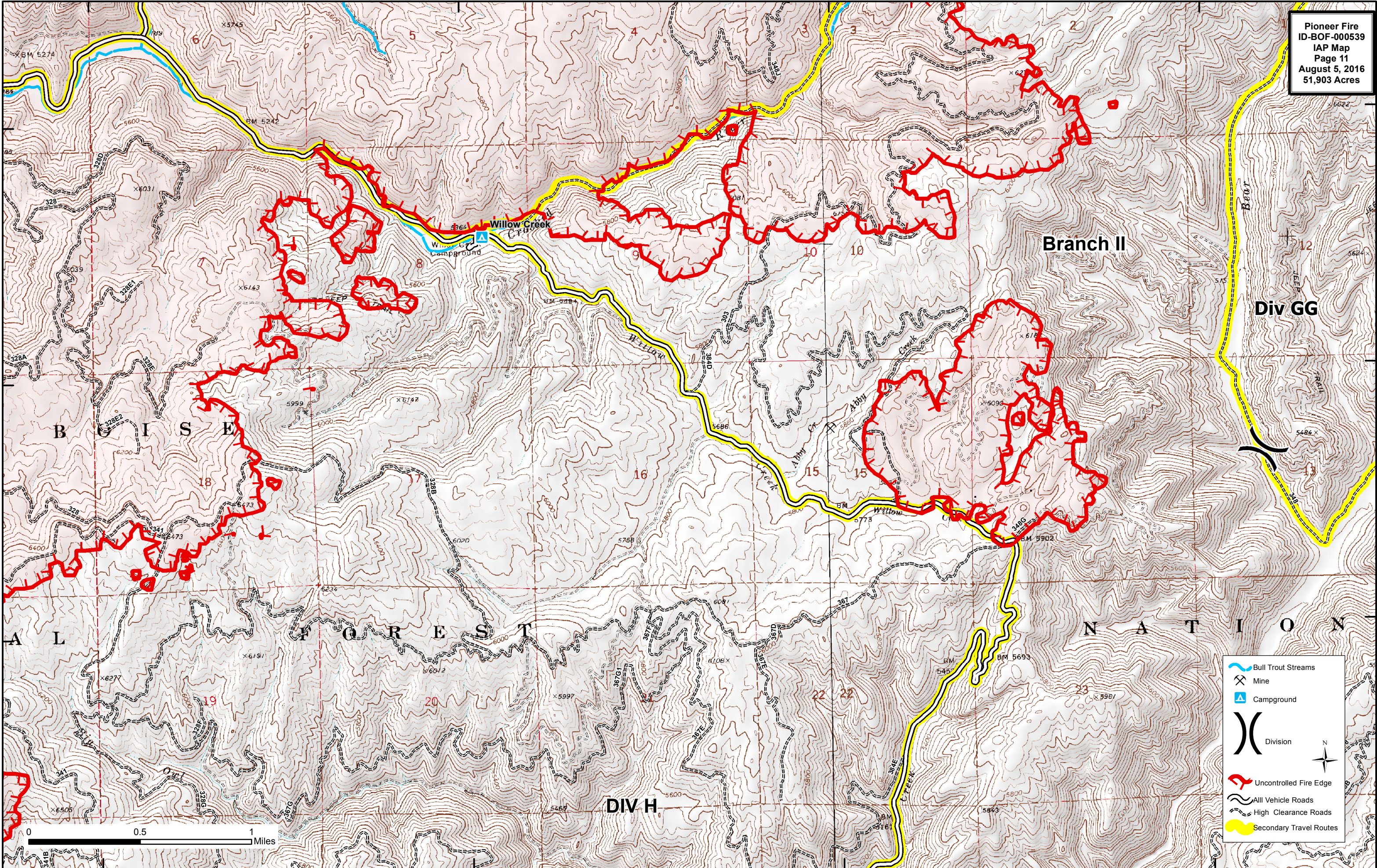
43°58'N

43°57'N

43°57'N

43°56'N

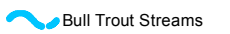
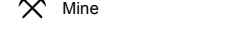
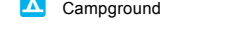





43°56'N

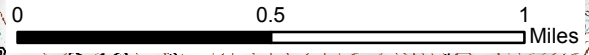


Branch II

Div GG

DIV H

-  Bull Trout Streams
-  Mine
-  Campground
-  Division
-  Uncontrolled Fire Edge
-  All Vehicle Roads
-  High Clearance Roads
-  Secondary Travel Routes



115°34'W

115°32'W

115°30'W

115°28'W