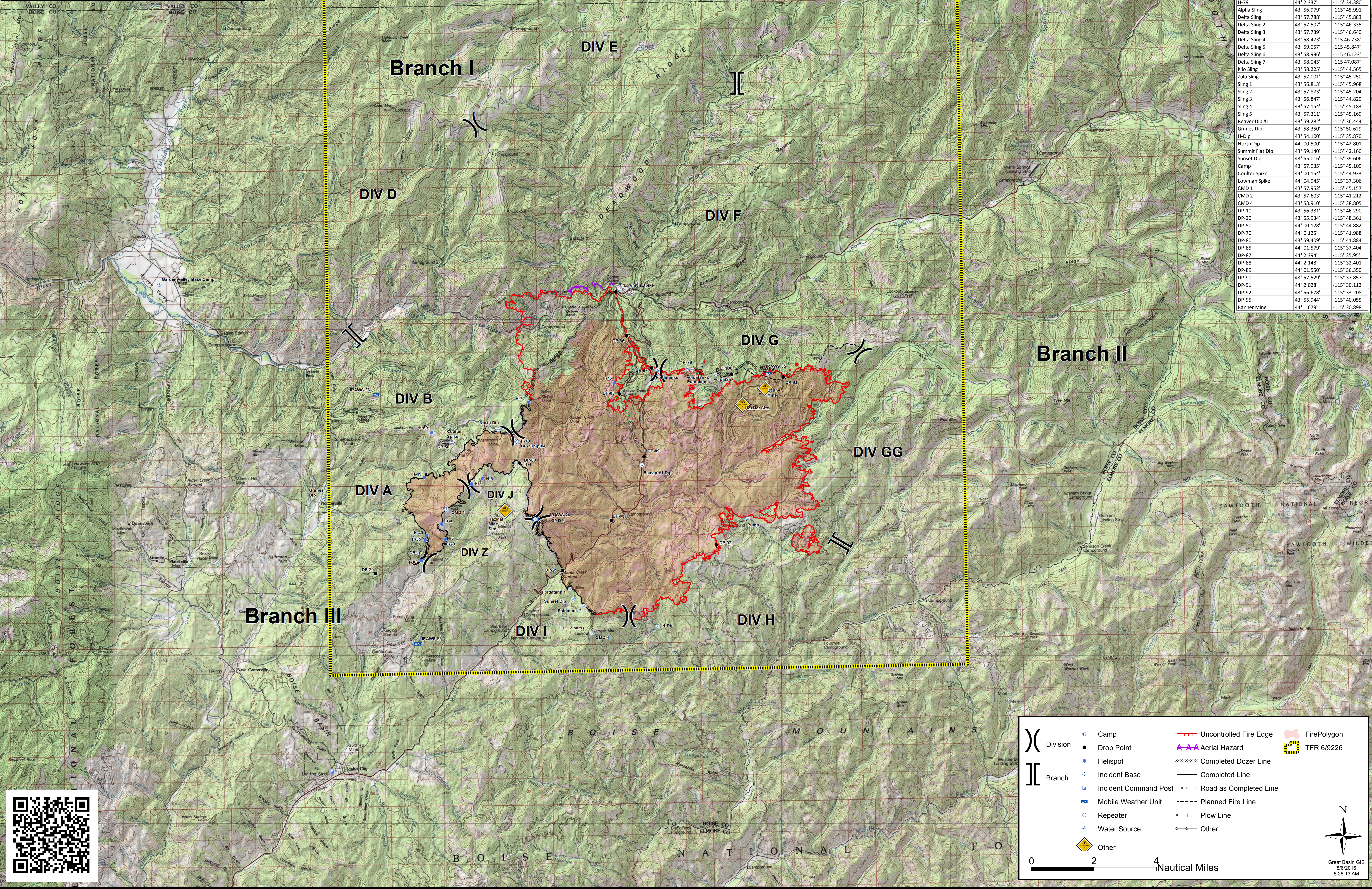




**Pioneer Fire**  
**ID-BOF-000539**  
**Air Ops Map**  
**August 6, 2016**  
**58,136 Acres**

**Pioneer Fire ID-BOF-000539**

Fire Points	Lat	Long
H-4	43° 59.409'	-115° 41.884'
H-5	43° 58.945'	-115° 43.549'
H-6	43° 57.490'	-115° 45.379'
H-7	43° 58.76'	-115° 44.029'
H-9	43° 57.952'	-115° 45.640'
H-20	43° 57.002'	-115° 45.243'
H-30	43° 56.331'	-115° 46.320'
H-35	43° 56.985'	-115° 46.123'
H-40	43° 57.138'	-115° 46.060'
H-49	43° 58.996'	-115° 46.123'
H-60	44° 00.430'	-115° 45.770'
H-70	44° 00.125'	-115° 42.017'
H-72	44° 1.36'	-115° 41.441'
H-75	44° 1.93'	-115° 37.623'
H-79	44° 2.337'	-115° 34.380'
Alpha Sling	43° 56.979'	-115° 45.991'
Delta Sling	43° 57.788'	-115° 45.883'
Delta Sling 2	43° 57.507'	-115° 46.335'
Delta Sling 3	43° 57.729'	-115° 45.640'
Delta Sling 4	43° 58.473'	-115° 46.738'
Delta Sling 5	43° 59.057'	-115° 45.847'
Delta Sling 6	43° 58.996'	-115° 46.123'
Delta Sling 7	43° 58.045'	-115° 47.087'
Kilo Sling	43° 58.225'	-115° 44.565'
Zulu Sling	43° 57.001'	-115° 45.250'
Sling 1	43° 56.813'	-115° 45.968'
Sling 2	43° 57.873'	-115° 45.204'
Sling 3	43° 56.847'	-115° 44.829'
Sling 4	43° 57.154'	-115° 45.183'
Sling 5	43° 57.311'	-115° 45.169'
Beaver Dip #1	43° 59.282'	-115° 36.444'
Grimes Dip	43° 58.350'	-115° 35.620'
H Dip	43° 54.100'	-115° 35.870'
North Dip	44° 00.500'	-115° 42.801'
Summit Flat Dip	43° 59.140'	-115° 42.160'
Sunset Dip	43° 55.016'	-115° 39.606'
Camp	43° 57.935'	-115° 45.109'
Coulter Spike	44° 00.154'	-115° 44.933'
Lowman Spike	44° 04.945'	-115° 37.306'
CMD 1	43° 57.952'	-115° 45.157'
CMD 2	43° 57.603'	-115° 41.212'
CMD 4	43° 53.910'	-115° 38.805'
DP-10	43° 56.381'	-115° 46.290'
DP-20	43° 55.934'	-115° 48.361'
DP-50	44° 00.128'	-115° 44.882'
DP-70	44° 01.121'	-115° 41.988'
DP-80	43° 59.409'	-115° 41.884'
DP-85	44° 01.579'	-115° 37.404'
DP-87	44° 2.394'	-115° 35.95'
DP-88	44° 2.148'	-115° 32.401'
DP-89	44° 01.550'	-115° 36.350'
DP-90	43° 57.529'	-115° 37.857'
DP-91	44° 2.028'	-115° 30.112'
DP-92	43° 56.678'	-115° 33.208'
DP-95	43° 55.944'	-115° 40.055'
Banner Mine	44° 1.679'	-115° 30.898'



( ) Division	● Camp	— Uncontrolled Fire Edge	■ Fire Polygon
Branch	● Drop Point	— Aerial Hazard	■ TFR 6/9226
	● Helispot	— Completed Dozer Line	
	● Incident Base	— Completed Line	
	● Incident Command Post	— Road as Completed Line	
	● Mobile Weather Unit	— Planned Fire Line	
	● Repeater	— Plow Line	
	● Water Source	— Other	
	◆ Other		

0 2 4 Nautical Miles

North Arrow

Great Basin GIS  
8/6/2016  
5:26:13 AM

