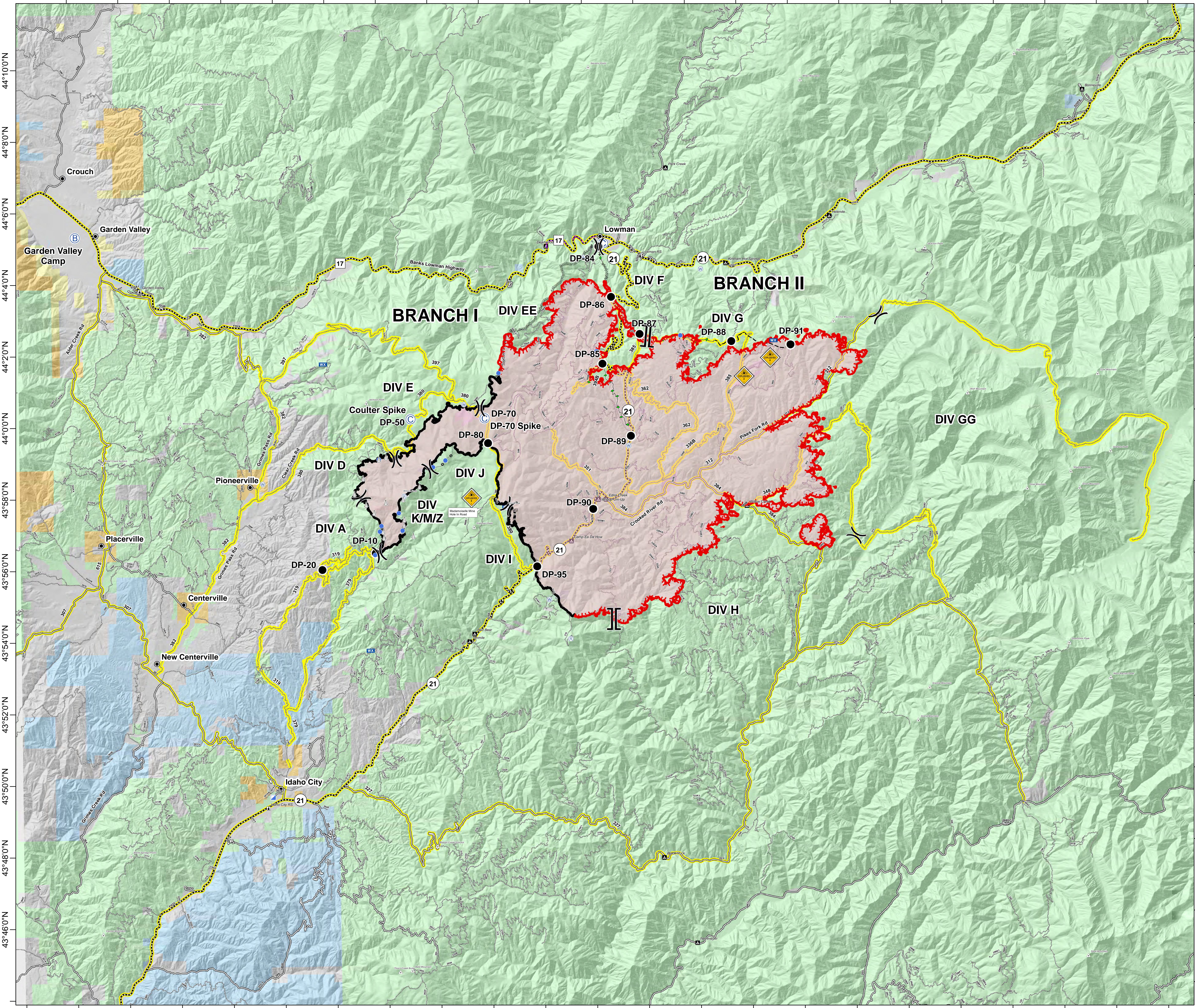


115°58'0"W 115°56'0"W 115°54'0"W 115°52'0"W 115°50'0"W 115°48'0"W 115°46'0"W 115°44'0"W 115°42'0"W 115°40'0"W 115°38'0"W 115°36'0"W 115°34'0"W 115°32'0"W 115°30'0"W 115°28'0"W 115°26'0"W 115°24'0"W 115°22'0"W 115°20'0"W 115°18'0"W 115°16'0"W

Pioneer Fire ID-BOF-000539 Transportation Map August 5, 2016 51,903 Acres

Legend

- Branch
- Division
- Camp
- Drop Point
- Helispot
- Incident Base
- Incident Command Post
- Mobile Weather Unit
- Repeater
- Sling Site
- Water Source
- HazMat Explosives
- Uncontrolled Fire Edge
- Completed Dozer Line
- Completed Line
- Hand Line
- Road as Completed Line
- Aerial Hazard
- Planned Fire Line
- Constructed Fuel Break
- Confinement Line
- Town
- Mountain Peak
- Ranger Station
- Campground
- Highway
- All Vehicle Roads
- High Clearance Roads
- Secondary Travel Routes
- Forest Service land
- Private Land
- State Land
- Bureau of Land Mgmt
- BOR



44°10'0"N
44°8'0"N
44°6'0"N
44°4'0"N
44°2'0"N
44°0'0"N
43°58'0"N
43°56'0"N
43°54'0"N
43°52'0"N
43°50'0"N
43°48'0"N
43°46'0"N
43°44'0"N

44°10'0"N
44°8'0"N
44°6'0"N
44°4'0"N
44°2'0"N
44°0'0"N
43°58'0"N
43°56'0"N
43°54'0"N
43°52'0"N
43°50'0"N
43°48'0"N
43°46'0"N
43°44'0"N

116°0'0"W 115°58'0"W 115°56'0"W 115°54'0"W 115°52'0"W 115°50'0"W 115°48'0"W 115°46'0"W 115°44'0"W 115°42'0"W 115°40'0"W 115°38'0"W 115°36'0"W 115°34'0"W 115°32'0"W 115°30'0"W 115°28'0"W 115°26'0"W 115°24'0"W 115°22'0"W 115°20'0"W 115°18'0"W 115°16'0"W

0 1 2 3 4
Miles

Great Basin Team 1 GIS
8/4/2016
10:05:47 PM