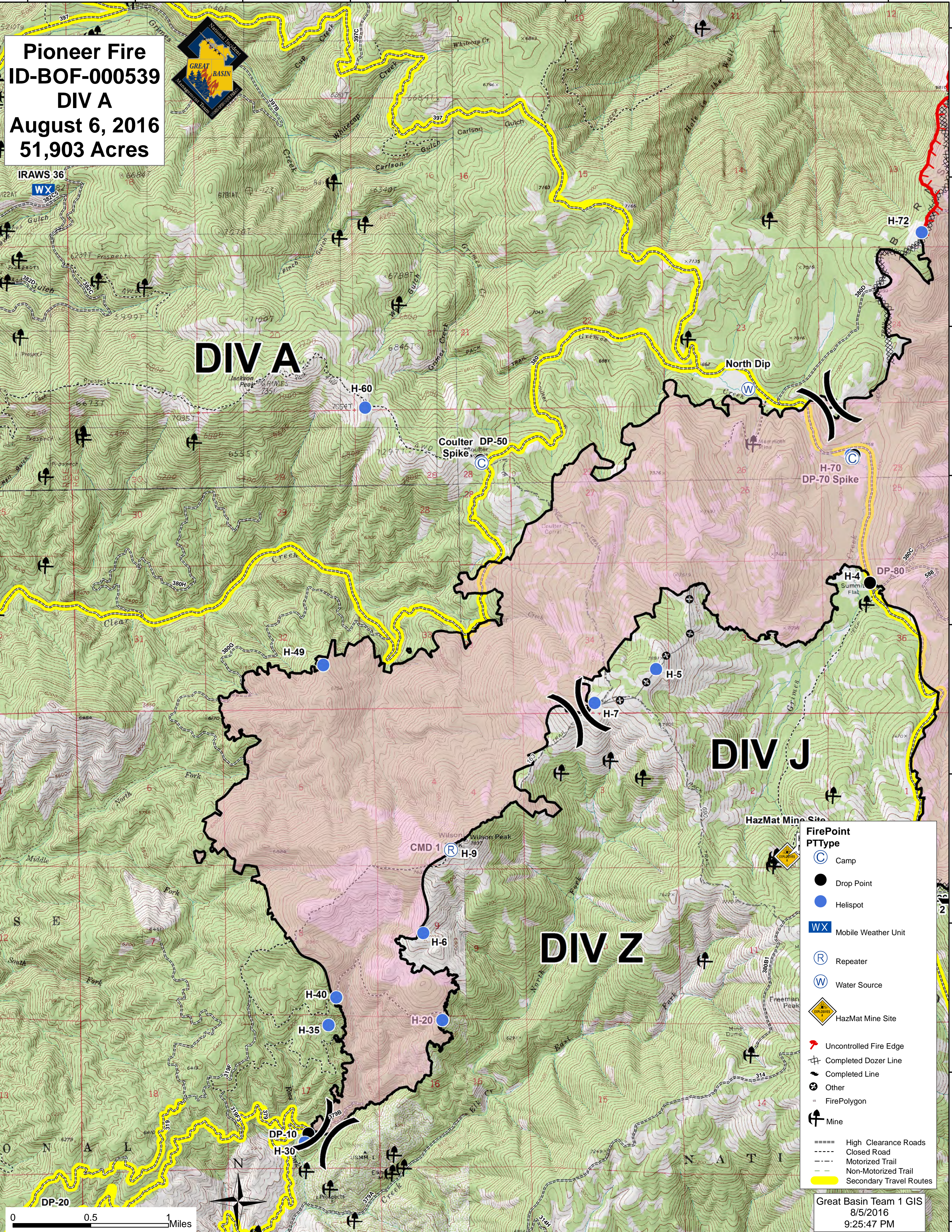


115°48'20"W 115°47'30"W 115°46'40"W 115°45'50"W 115°45'0"W 115°44'10"W 115°43'20"W 115°42'30"W 115°41'40"W



**Pioneer Fire**  
**ID-BOF-000539**  
**DIV A**  
**August 6, 2016**  
**51,903 Acres**



**DIV A**

**DIV J**

**DIV Z**

- FirePoint PType**
- Camp
  - Drop Point
  - Helispot
  - Mobile Weather Unit
  - Repeater
  - Water Source
  - HazMat Mine Site
  - Uncontrolled Fire Edge
  - Completed Dozer Line
  - Completed Line
  - Other
  - FirePolygon
  - Mine
  - High Clearance Roads
  - Closed Road
  - Motorized Trail
  - Non-Motorized Trail
  - Secondary Travel Routes

0 0.5 1 Miles

Great Basin Team 1 GIS  
8/5/2016  
9:25:47 PM

115°48'20"W 115°47'30"W 115°46'40"W 115°45'50"W 115°45'0"W 115°44'10"W 115°43'20"W 115°42'30"W 115°41'40"W

44°2'30"N  
44°1'40"N  
44°0'50"N  
44°0'0"N  
43°59'10"N  
43°58'20"N  
43°57'30"N  
43°56'40"N  
43°55'50"N

44°2'30"N  
44°1'40"N  
44°0'50"N  
44°0'0"N  
43°59'10"N  
43°58'20"N  
43°57'30"N  
43°56'40"N  
43°55'50"N