



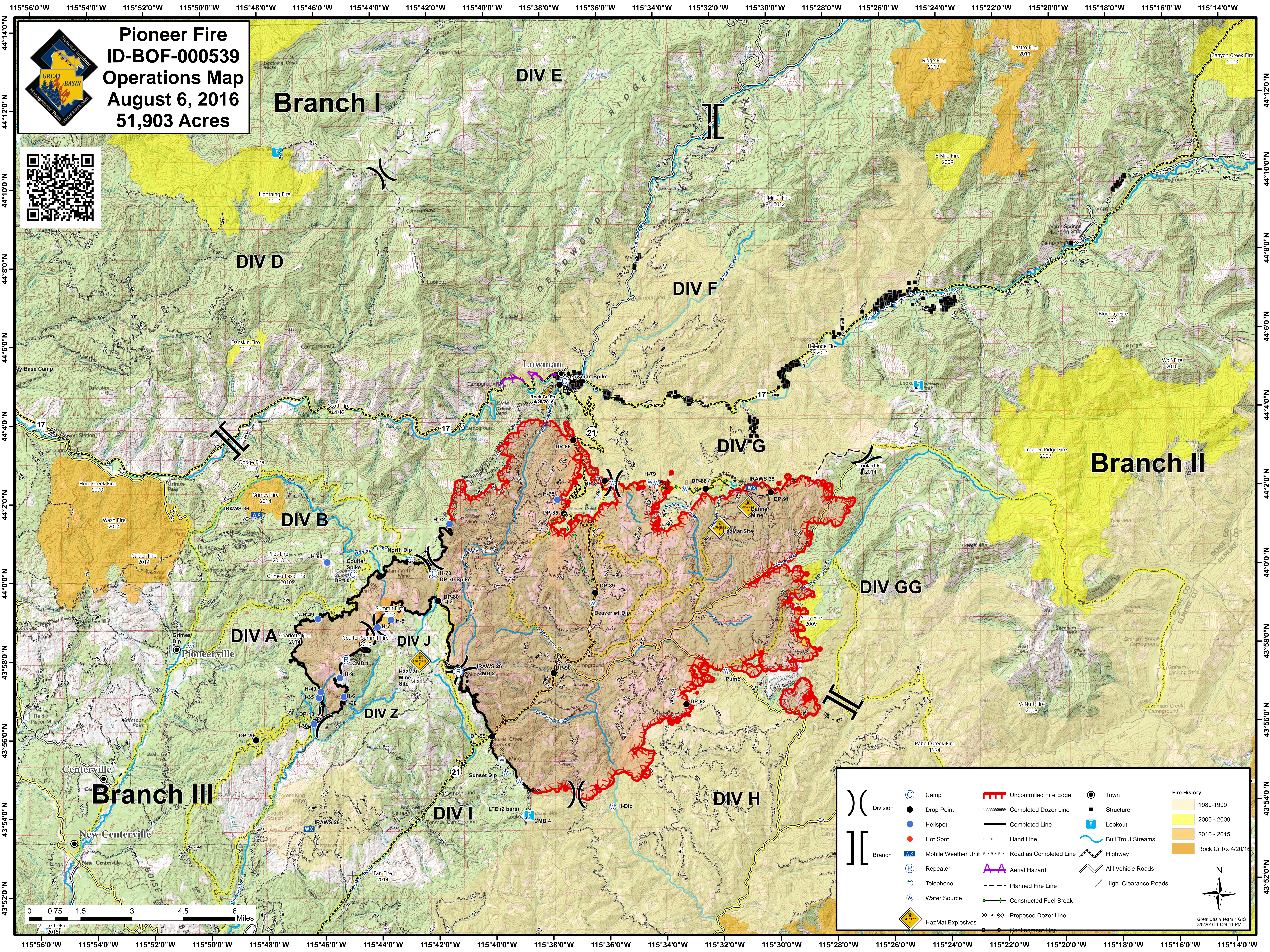
Pioneer Fire
ID-BOF-000539
Operations Map
August 6, 2016
51,903 Acres



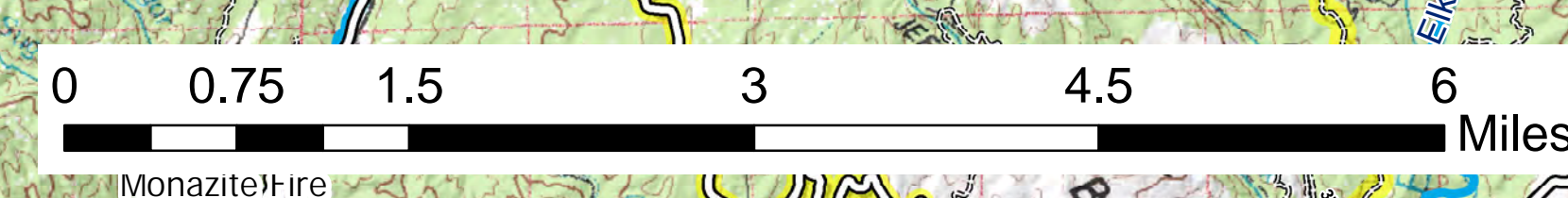
Branch I

Branch II

Branch III



	Division		Camp		Uncontrolled Fire Edge		Town	Fire History	
	Drop Point		Completed Dozer Line		Completed Line		Structure		1989-1999
	Helispot		Hand Line		Aerial Hazard		Lookout		2000 - 2009
	Hot Spot		Road as Completed Line		Planned Fire Line		Bull Trout Streams		2010 - 2015
	Mobile Weather Unit		Constructed Fuel Break		Proposed Dozer Line		Highway		Rock Cr Rx 4/20/16
	Repeater		All Vehicle Roads				HazMat Explosives		
	Telephone		High Clearance Roads						
	Water Source								



Great Basin Team 1 GIS
 8/5/2016 10:29:41 PM