

115°56'0"W 115°54'0"W 115°52'0"W 115°50'0"W 115°48'0"W 115°46'0"W 115°44'0"W 115°42'0"W 115°40'0"W 115°38'0"W 115°36'0"W 115°34'0"W 115°32'0"W 115°30'0"W 115°28'0"W 115°26'0"W 115°24'0"W 115°22'0"W 115°20'0"W 115°18'0"W 115°16'0"W 115°14'0"W



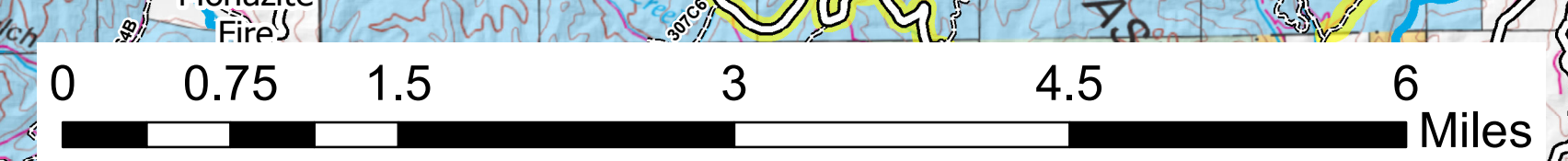
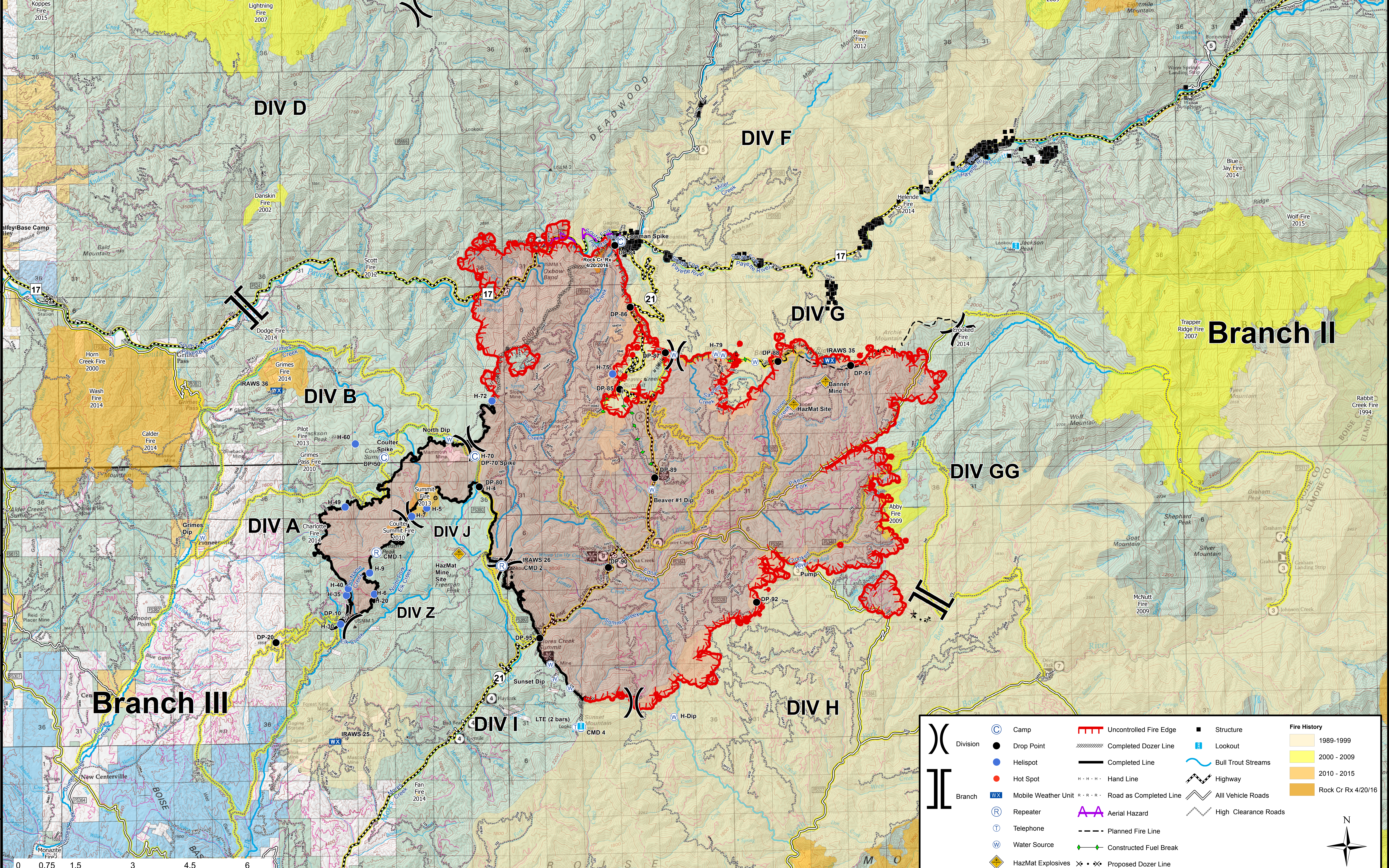
Pioneer Fire
ID-BOF-000539
Operations Map
August 6, 2016
58,136 Acres



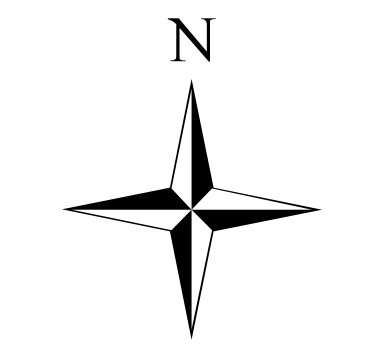
Branch I

Branch II

Branch III



	Division		Camp		Uncontrolled Fire Edge		Structure		1989-1999
	Branch		Drop Point		Completed Dozer Line		Lookout		2000-2009
			Helispot		Completed Line		Bull Trout Streams		2010-2015
			Hot Spot		Hand Line		Highway		Rock Cr Rx 4/20/16
			Mobile Weather Unit		Road as Completed Line		All Vehicle Roads		
			Repeater		Aerial Hazard		High Clearance Roads		
			Telephone		Planned Fire Line				
			Water Source		Constructed Fuel Break				
			HazMat Explosives		Proposed Dozer Line				
			Confinement Line						



Great Basin Team 1 GIS
8/6/2016 3:09:56 PM