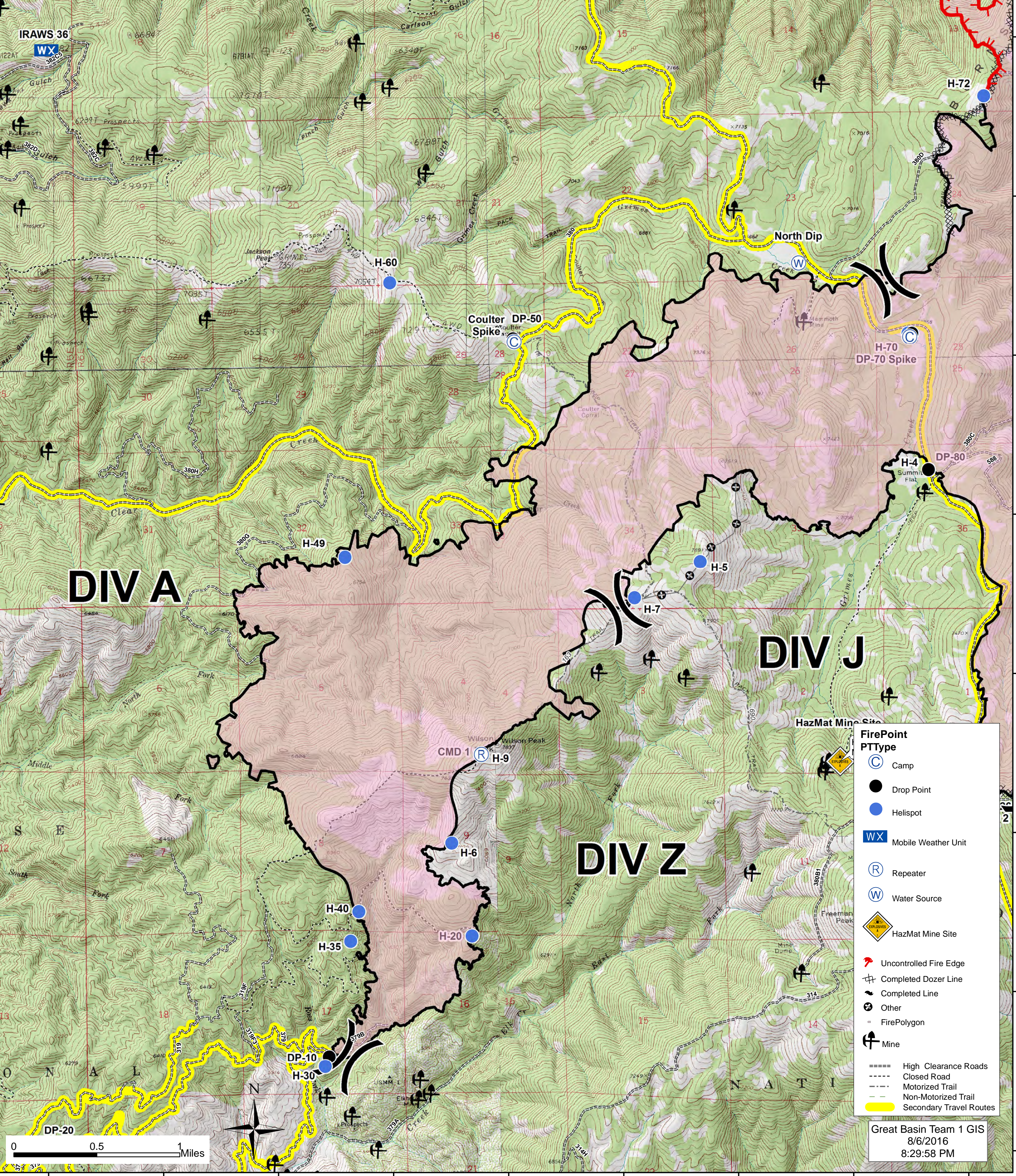


115°48'20"W 115°47'30"W 115°46'40"W 115°45'50"W 115°45'0"W 115°44'10"W 115°43'20"W 115°42'30"W 115°41'40"W

Pioneer Fire
ID-BOF-000539
DIV A
August 7, 2016
58,136 Acres

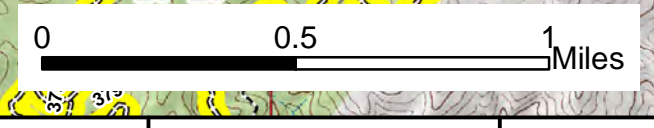


FirePoint

PTType

- Camp
- Drop Point
- Helispot
- Mobile Weather Unit
- Repeater
- Water Source
- HazMat Mine Site
- Uncontrolled Fire Edge
- Completed Dozer Line
- Completed Line
- Other
- FirePolygon
- Mine

==== High Clearance Roads
 - - - - Closed Road
 - - - - Motorized Trail
 - - - - Non-Motorized Trail
 - - - - Secondary Travel Routes



Great Basin Team 1 GIS
8/6/2016
8:29:58 PM

115°48'20"W 115°47'30"W 115°46'40"W 115°45'50"W 115°45'0"W 115°44'10"W 115°43'20"W 115°42'30"W 115°41'40"W