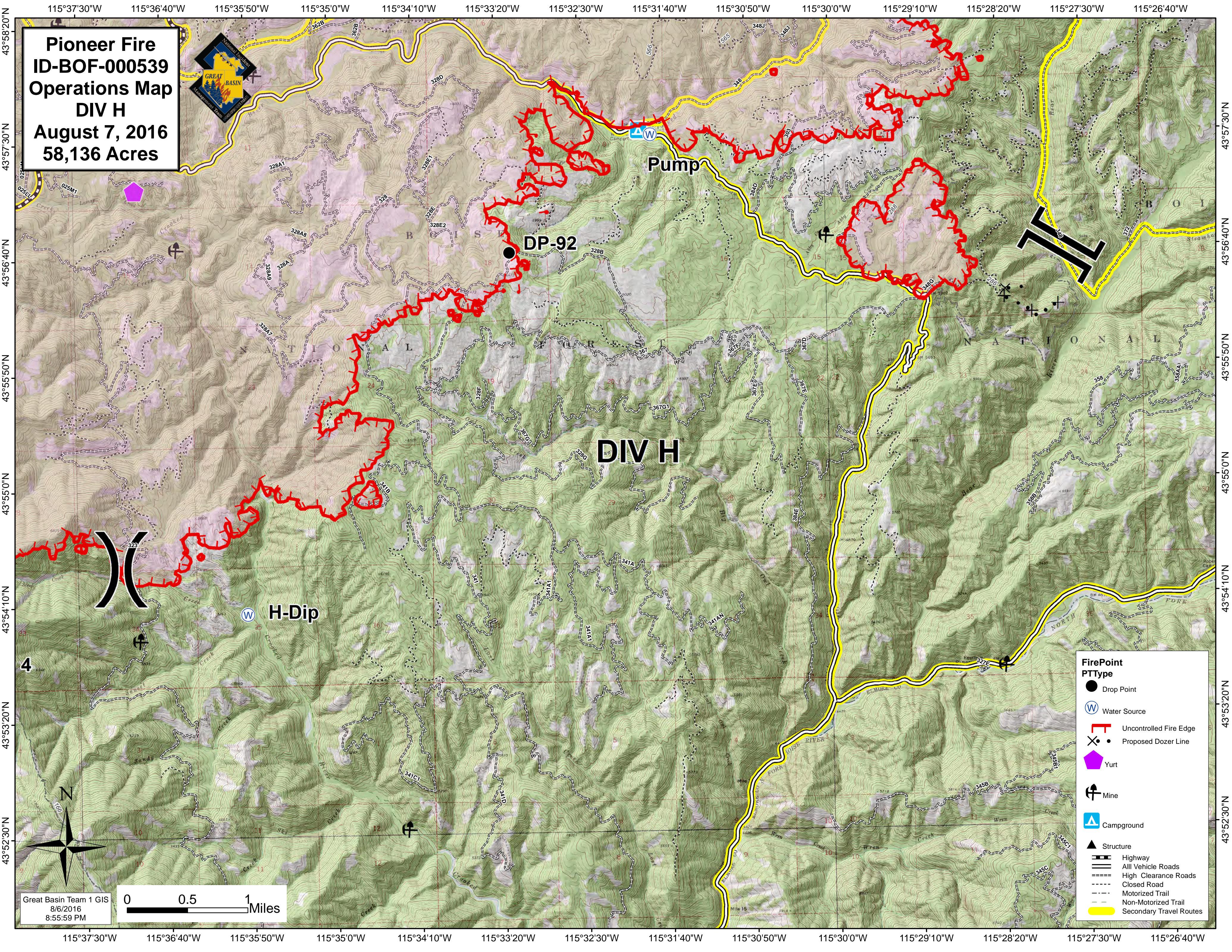


**Pioneer Fire**  
**ID-BOF-000539**  
**Operations Map**  
**DIV H**  
**August 7, 2016**  
**58,136 Acres**



**FirePoint**  
**PTType**

- Drop Point
- Ⓜ Water Source
- ┌┐ Uncontrolled Fire Edge
- ⊗ Proposed Dozer Line
- ⬠ Yurt
- ⚡ Mine
- Ⓜ Campground
- ▲ Structure
- ▬ Highway
- ▬ All Vehicle Roads
- ▬ High Clearance Roads
- ▬ Closed Road
- ▬ Motorized Trail
- ▬ Non-Motorized Trail
- ▬ Secondary Travel Routes

Great Basin Team 1 GIS  
 8/6/2016  
 8:55:59 PM

0 0.5 1 Miles

115°37'30"W 115°36'40"W 115°35'50"W 115°35'0"W 115°34'10"W 115°33'20"W 115°32'30"W 115°31'40"W 115°30'50"W 115°30'0"W 115°29'10"W 115°28'20"W 115°27'30"W 115°26'40"W

43°58'20"N 43°57'30"N 43°56'40"N 43°55'50"N 43°55'0"N 43°54'10"N 43°53'20"N 43°52'30"N

WATKINS FORK NATIONAL MONUMENT

DIV H

DP-92

Pump

H-Dip