

115°43'20"W 115°42'30"W 115°41'40"W 115°40'50"W 115°40'0"W 115°39'10"W 115°38'20"W 115°37'30"W 115°36'40"W

Pioneer Fire ID-BOF-000539 Operations Map DIV I August 7, 2016 58,136 Acres

Mademoiselle Mine - Hole in Road

IRAWS
CMD 2

DP-90

DP-90

Fold Tank 1

Sunset Dip

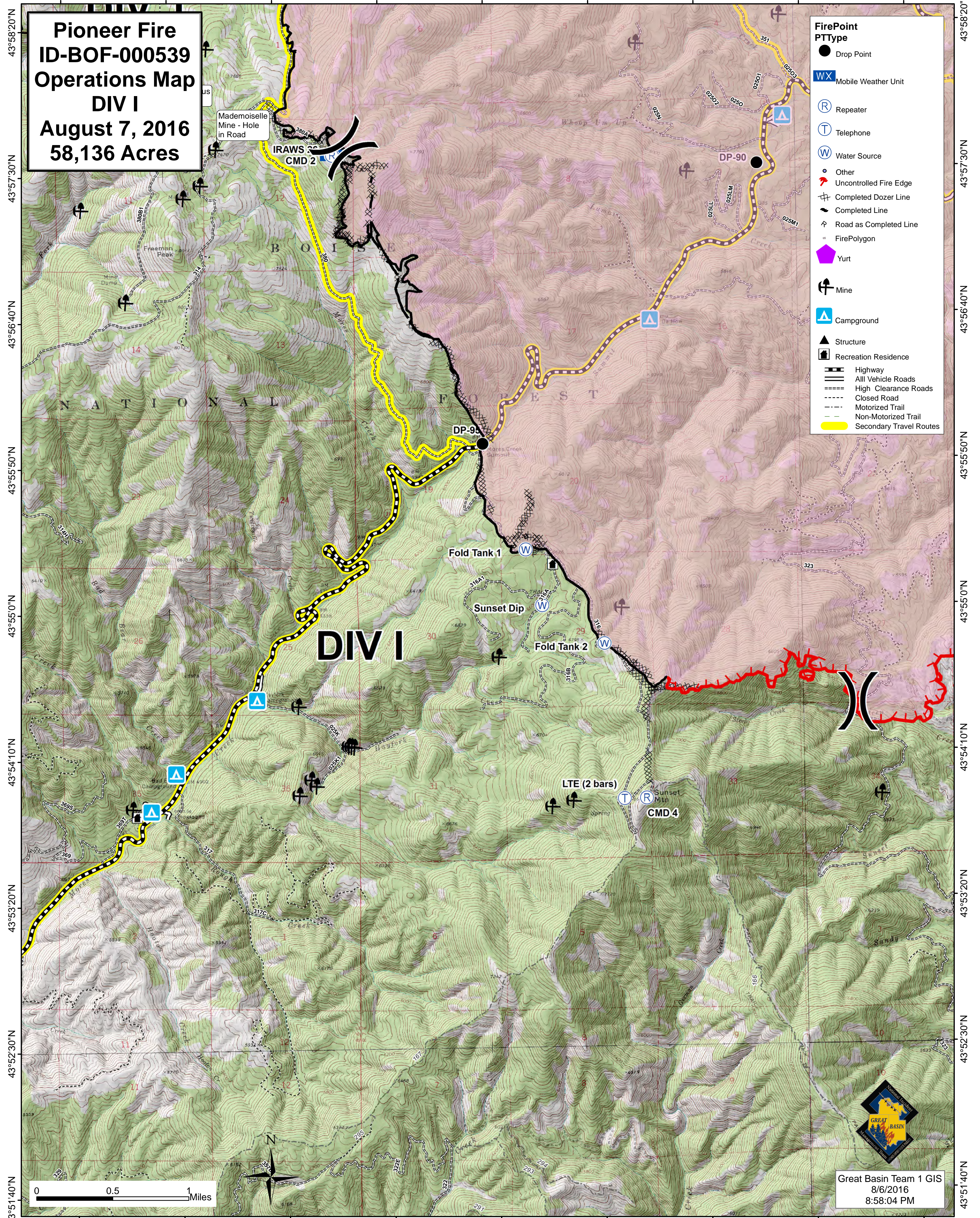
Fold Tank 2

LTE (2 bars)

CMD 4

DIV I

- FirePoint PType**
- Drop Point
 - WX Mobile Weather Unit
 - Ⓡ Repeater
 - Ⓣ Telephone
 - Ⓦ Water Source
 - Other
 - 🔥 Uncontrolled Fire Edge
 - ⚡ Completed Dozer Line
 - Completed Line
 - ⚡ Road as Completed Line
 - FirePolygon
 - 🏠 Yurt
 - ⚡ Mine
 - Ⓜ Campground
 - ▲ Structure
 - 🏠 Recreation Residence
 - ⚡ Highway
 - All Vehicle Roads
 - ⚡ High Clearance Roads
 - ⚡ Closed Road
 - ⚡ Motorized Trail
 - ⚡ Non-Motorized Trail
 - 🟡 Secondary Travel Routes



Great Basin Team 1 GIS
8/6/2016
8:58:04 PM

115°43'20"W 115°42'30"W 115°41'40"W 115°40'50"W 115°40'0"W 115°39'10"W 115°38'20"W 115°37'30"W 115°36'40"W