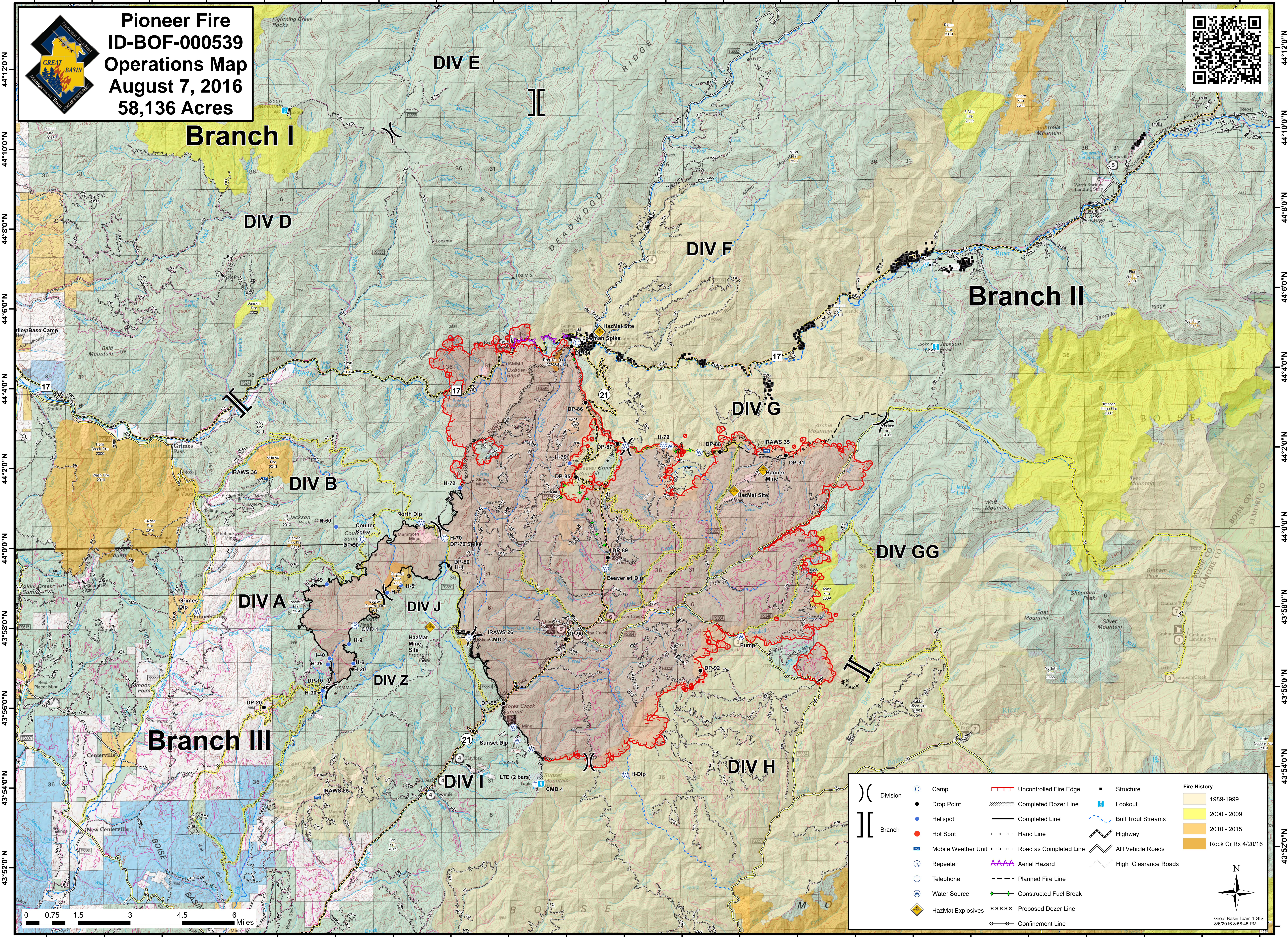


115°56'0"W 115°54'0"W 115°52'0"W 115°50'0"W 115°48'0"W 115°46'0"W 115°44'0"W 115°42'0"W 115°40'0"W 115°38'0"W 115°36'0"W 115°34'0"W 115°32'0"W 115°30'0"W 115°28'0"W 115°26'0"W 115°24'0"W 115°22'0"W 115°20'0"W 115°18'0"W 115°16'0"W 115°14'0"W



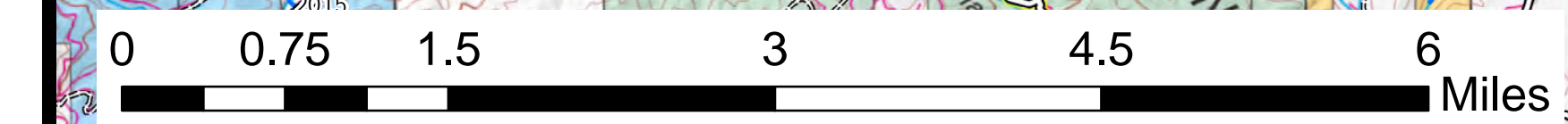
**Pioneer Fire**  
**ID-BOF-000539**  
**Operations Map**  
**August 7, 2016**  
**58,136 Acres**



**Branch I**

**Branch II**

**Branch III**



	Division		Camp		Uncontrolled Fire Edge		Structure		1989-1999
	Drop Point		Lookout		Completed Dozer Line		Bull Trout Streams		2000 - 2009
	HeliSpot		Highway		Completed Line		All Vehicle Roads		2010 - 2015
	Hot Spot		Road as Completed Line		Hand Line		High Clearance Roads		Rock Cr Rx 4/20/16
	Mobile Weather Unit		Aerial Hazard		Planned Fire Line				
	Repeater		Constructed Fuel Break		Proposed Dozer Line				
	Telephone		Confinement Line						
	Water Source								
	HazMat Explosives								



115°56'0"W 115°54'0"W 115°52'0"W 115°50'0"W 115°48'0"W 115°46'0"W 115°44'0"W 115°42'0"W 115°40'0"W 115°38'0"W 115°36'0"W 115°34'0"W 115°32'0"W 115°30'0"W 115°28'0"W 115°26'0"W 115°24'0"W 115°22'0"W 115°20'0"W 115°18'0"W 115°16'0"W 115°14'0"W