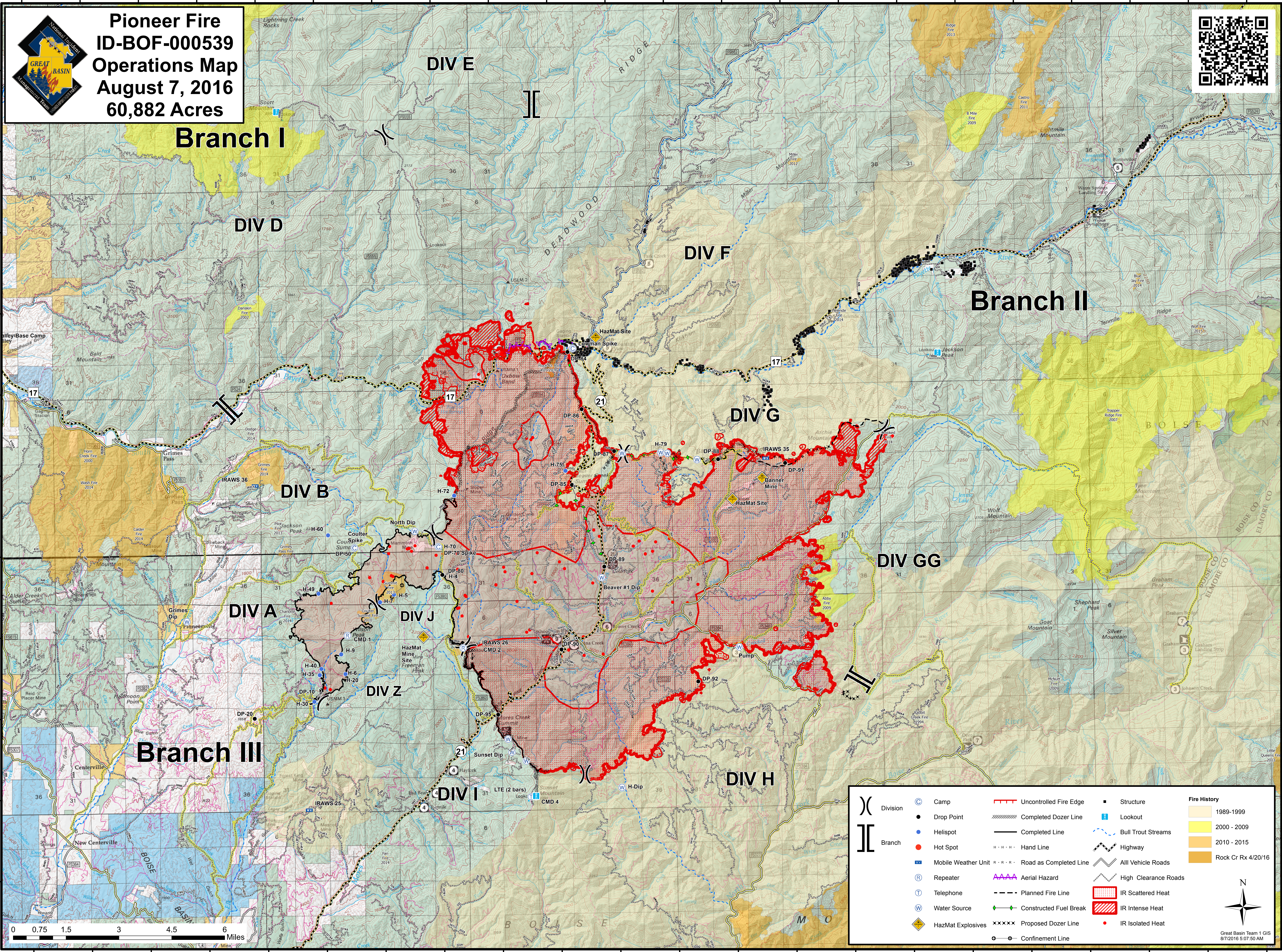


115°56'0"W 115°54'0"W 115°52'0"W 115°50'0"W 115°48'0"W 115°46'0"W 115°44'0"W 115°42'0"W 115°40'0"W 115°38'0"W 115°36'0"W 115°34'0"W 115°32'0"W 115°30'0"W 115°28'0"W 115°26'0"W 115°24'0"W 115°22'0"W 115°20'0"W 115°18'0"W 115°16'0"W 115°14'0"W



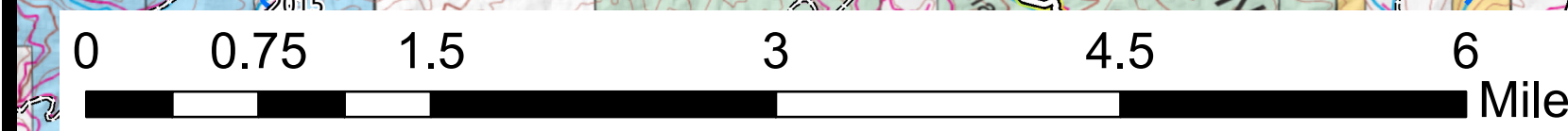
Pioneer Fire
ID-BOF-000539
Operations Map
August 7, 2016
60,882 Acres



Branch I

Branch II

Branch III



(X)	Division	(C)	Camp	—	Uncontrolled Fire Edge	■	Structure	■	1989-1999
()	Branch	(●)	Drop Point	—	Completed Dozer Line	(L)	Lookout	■	2000 - 2009
		(●)	Hellspot	—	Completed Line	(B)	Bull Trout Streams	■	2010 - 2015
		(●)	Hot Spot	—	Hand Line	(H)	Highway	■	Rock Cr Rx 4/20/16
		(M)	Mobile Weather Unit	—	Road as Completed Line	(A)	All Vehicle Roads		
		(R)	Repeater	—	Aerial Hazard	(H)	High Clearance Roads		
		(T)	Telephone	—	Planned Fire Line	(S)	IR Scattered Heat		
		(W)	Water Source	—	Constructed Fuel Break	(I)	IR Intense Heat		
		(E)	HazMat Explosives	—	Proposed Dozer Line	(I)	IR Isolated Heat		
		(C)	Confinement Line						



Great Basin Team 1 GIS
8/7/2016 5:07:50 AM