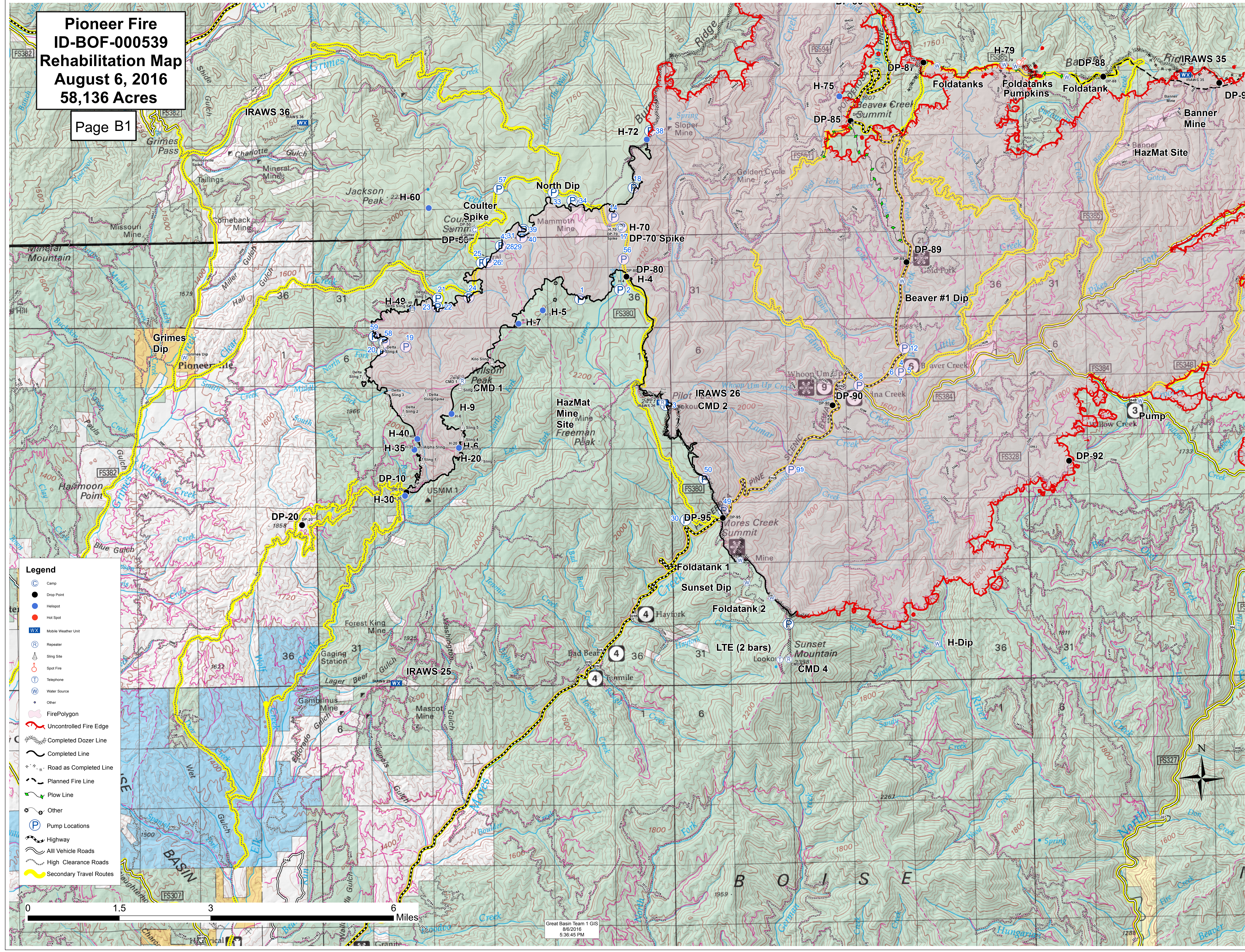
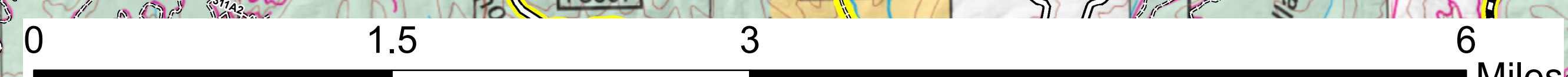


**Pioneer Fire
ID-BOF-000539
Rehabilitation Map
August 6, 2016
58,136 Acres**

Page B1



- Legend**
- Camp
 - Drop Point
 - Helispot
 - Hot Spot
 - WX Mobile Weather Unit
 - Ⓡ Repeater
 - Ⓢ Sling Site
 - Ⓢ Spot Site
 - Ⓢ Telephone
 - Ⓢ Water Source
 - Other
 - FirePolygon
 - Uncontrolled Fire Edge
 - Completed Dozer Line
 - Completed Line
 - Road as Completed Line
 - Planned Fire Line
 - Plow Line
 - Other
 - Ⓢ Pump Locations
 - Highway
 - All Vehicle Roads
 - High Clearance Roads
 - Secondary Travel Routes



Great Basin Team 1 GIS
8/6/2016
5:36:45 PM

