

115°44'W

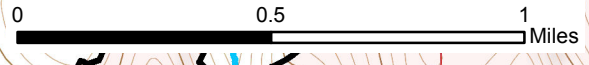
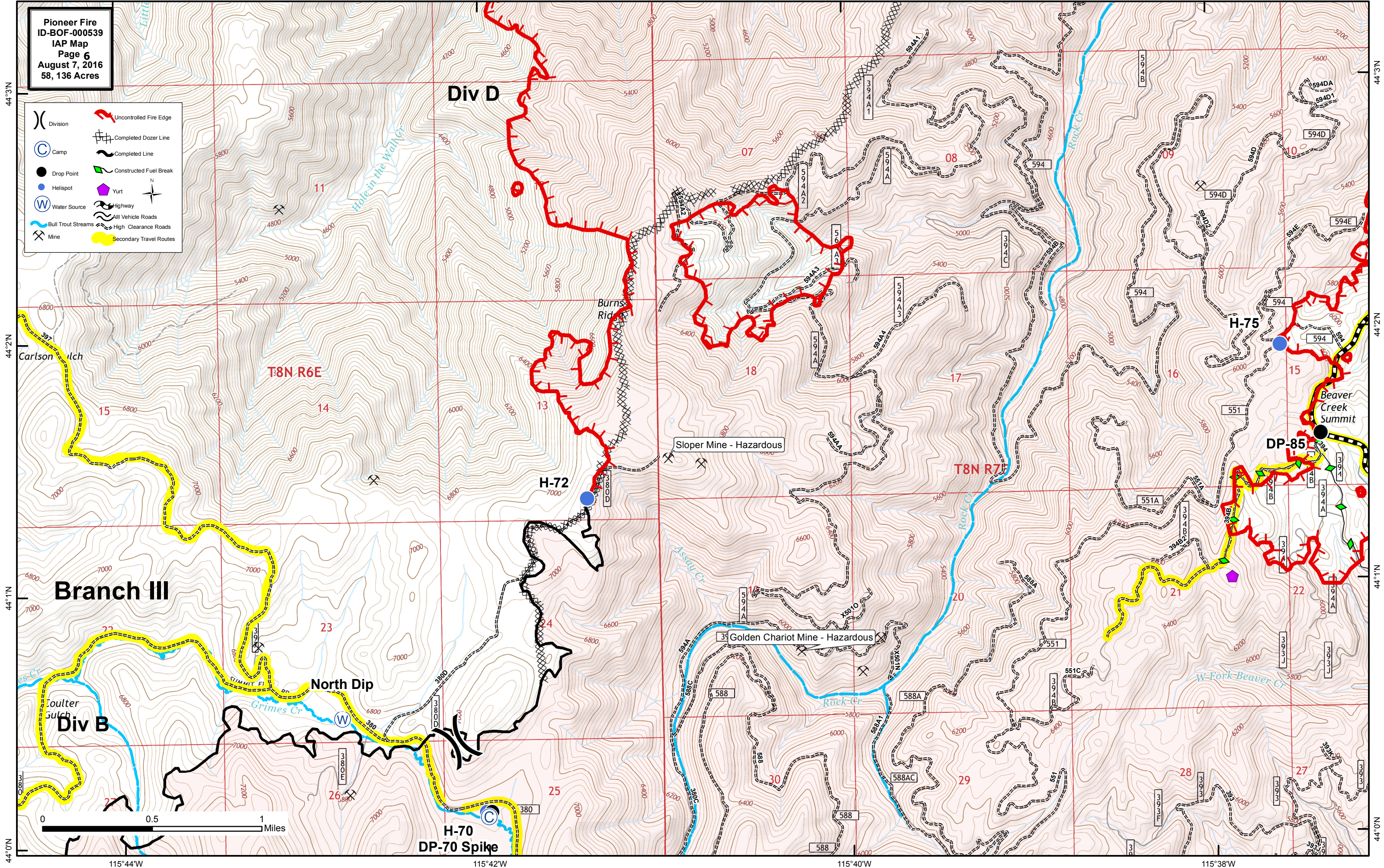
115°42'W

115°40'W

115°38'W

Pioneer Fire
 ID-BOF-000539
 IAP Map
 Page 6
 August 7, 2016
 58,136 Acres

- | | |
|----------------------|---------------------------|
| (X) Division | 🔴 Uncontrolled Fire Edge |
| (C) Camp | 🏠 Completed Dozer Line |
| ● Drop Point | 🛣️ Completed Line |
| ⬇️ Helispot | 🌿 Constructed Fuel Break |
| (W) Water Source | 🏠 Yurt |
| 🌊 Bull Trout Streams | 🛣️ Highway |
| ⛏ Mine | 🛣️ All Vehicle Roads |
| | 🛣️ High Clearance Roads |
| | 🟡 Secondary Travel Routes |



44°3'N

44°3'N

44°2'N

44°2'N

44°1'N

44°1'N

44°0'N

44°0'N

115°44'W

115°42'W

115°40'W

115°38'W