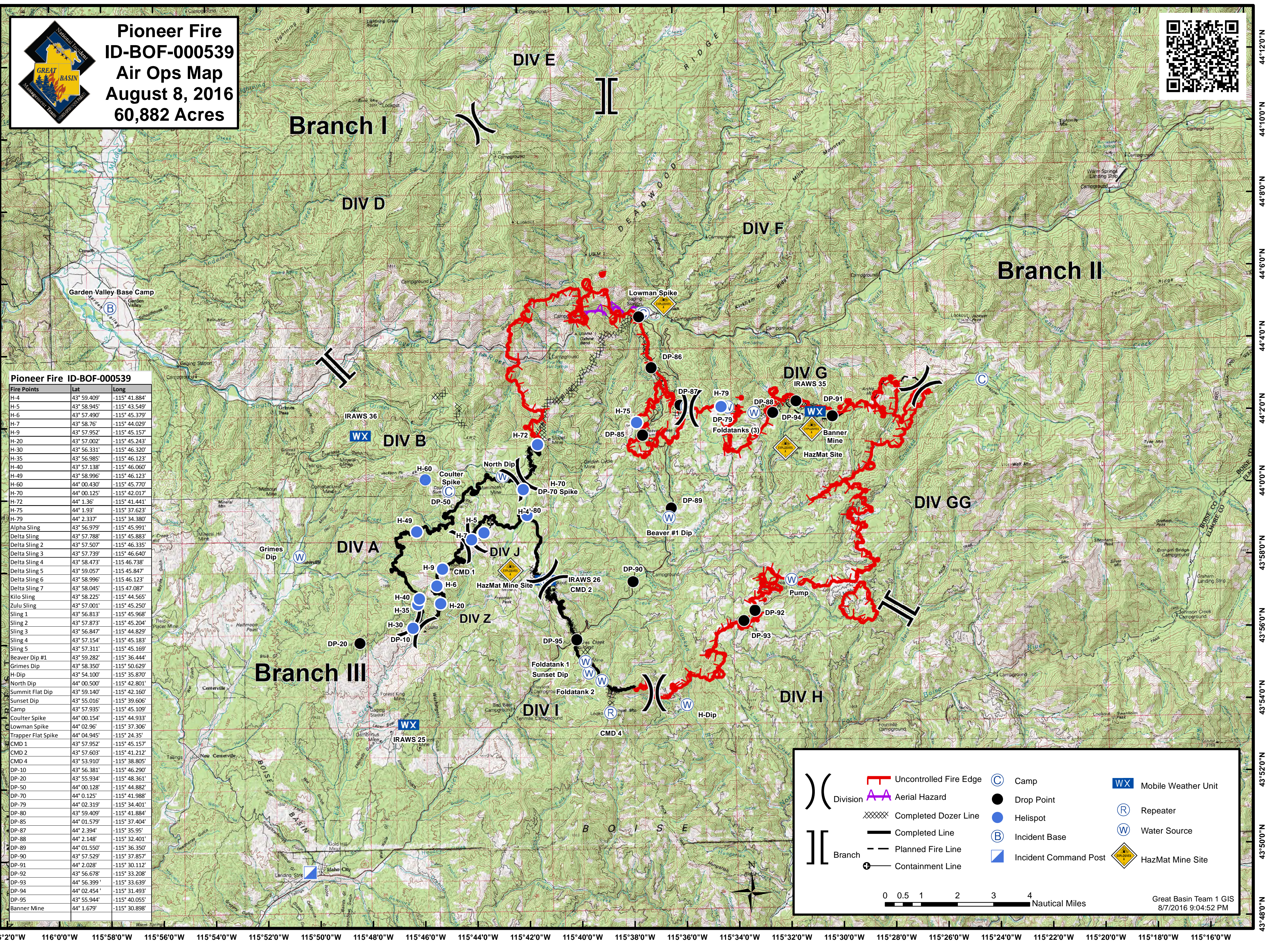


Pioneer Fire
ID-BOF-000539
Air Ops Map
August 8, 2016
60,882 Acres



Pioneer Fire ID-BOF-000539

Fire Points	Lat	Long
H-4	43° 59.409'	-115° 41.884'
H-5	43° 58.945'	-115° 43.549'
H-6	43° 57.490'	-115° 45.379'
H-7	43° 58.76'	-115° 44.029'
H-9	43° 57.952'	-115° 45.157'
H-20	43° 57.002'	-115° 45.243'
H-30	43° 56.331'	-115° 46.320'
H-35	43° 56.985'	-115° 46.123'
H-40	43° 57.138'	-115° 46.060'
H-49	43° 58.996'	-115° 46.123'
H-60	44° 00.430'	-115° 45.770'
H-70	44° 00.125'	-115° 42.017'
H-72	44° 1.36'	-115° 41.441'
H-75	44° 1.93'	-115° 37.623'
H-79	44° 2.337'	-115° 34.380'
Alpha Sling	43° 56.979'	-115° 45.991'
Delta Sling	43° 57.788'	-115° 45.883'
Delta Sling 2	43° 57.507'	-115° 46.335'
Delta Sling 3	43° 57.739'	-115° 46.640'
Delta Sling 4	43° 58.473'	-115° 46.738'
Delta Sling 5	43° 59.057'	-115° 45.847'
Delta Sling 6	43° 58.996'	-115° 46.123'
Delta Sling 7	43° 58.045'	-115° 47.087'
Kilo Sling	43° 58.225'	-115° 44.565'
Zulu Sling	43° 57.001'	-115° 45.250'
Sling 1	43° 56.813'	-115° 45.968'
Sling 2	43° 57.873'	-115° 45.204'
Sling 3	43° 56.847'	-115° 44.829'
Sling 4	43° 57.154'	-115° 45.183'
Sling 5	43° 57.311'	-115° 45.169'
Beaver Dip #1	43° 59.282'	-115° 36.444'
Grimes Dip	43° 58.350'	-115° 50.629'
H-Dip	43° 54.100'	-115° 35.870'
North Dip	44° 00.500'	-115° 42.801'
Summit Flat Dip	43° 59.140'	-115° 42.160'
Sunset Dip	43° 55.016'	-115° 39.606'
Camp	43° 57.935'	-115° 45.109'
Coulter Spike	44° 00.154'	-115° 44.933'
Lowman Spike	44° 02.96'	-115° 37.306'
Trapper Flat Spike	44° 04.945'	-115° 24.35'
CMD 1	43° 57.952'	-115° 45.157'
CMD 2	43° 57.603'	-115° 41.212'
CMD 4	43° 53.910'	-115° 38.805'
DP-10	43° 56.381'	-115° 46.290'
DP-20	43° 55.934'	-115° 48.361'
DP-50	44° 00.128'	-115° 44.882'
DP-70	44° 0.125'	-115° 41.988'
DP-79	44° 02.319'	-115° 34.401'
DP-80	43° 59.409'	-115° 41.884'
DP-85	44° 01.579'	-115° 37.404'
DP-87	44° 2.394'	-115° 35.95'
DP-88	44° 2.148'	-115° 32.401'
DP-89	44° 01.550'	-115° 36.350'
DP-90	43° 57.529'	-115° 37.857'
DP-91	44° 2.028'	-115° 30.112'
DP-92	43° 56.678'	-115° 33.208'
DP-93	44° 56.399'	-115° 33.639'
DP-94	44° 02.454'	-115° 31.493'
DP-95	43° 55.944'	-115° 40.055'
Banner Mine	44° 1.679'	-115° 30.898'

	Uncontrolled Fire Edge		Camp		Mobile Weather Unit
	Aerial Hazard		Drop Point		Repeater
	Completed Dozer Line		Helispot		Water Source
	Completed Line		Incident Base		Incident Command Post
	Planned Fire Line		HazMat Mine Site		
	Branch				
	Containment Line				

0 0.5 1 2 3 4 Nautical Miles

Great Basin Team 1 GIS
8/7/2016 9:04:52 PM