

115°50'0"W 115°49'10"W 115°48'20"W 115°47'30"W 115°46'40"W 115°45'50"W 115°45'0"W 115°44'10"W 115°43'20"W 115°42'30"W 115°41'40"W 115°40'50"W 115°40'0"W 115°39'10"W 115°38'20"W 115°37'30"W 115°36'40"W 115°35'50"W 115°35'0"W 115°34'10"W 115°33'20"W 115°32'30"W 115°31'40"W 115°30'50"W 115°30'0"W 115°29'10"W 115°28'20"W 115°27'30"W 115°26'40"W 115°25'50"W 115°25'0"W

Pioneer Fire
ID-BOF-000539
Operations
Hwy 17 Ortho Map
August 8, 2016
60,882 Acres

Branch I

DIV E

II

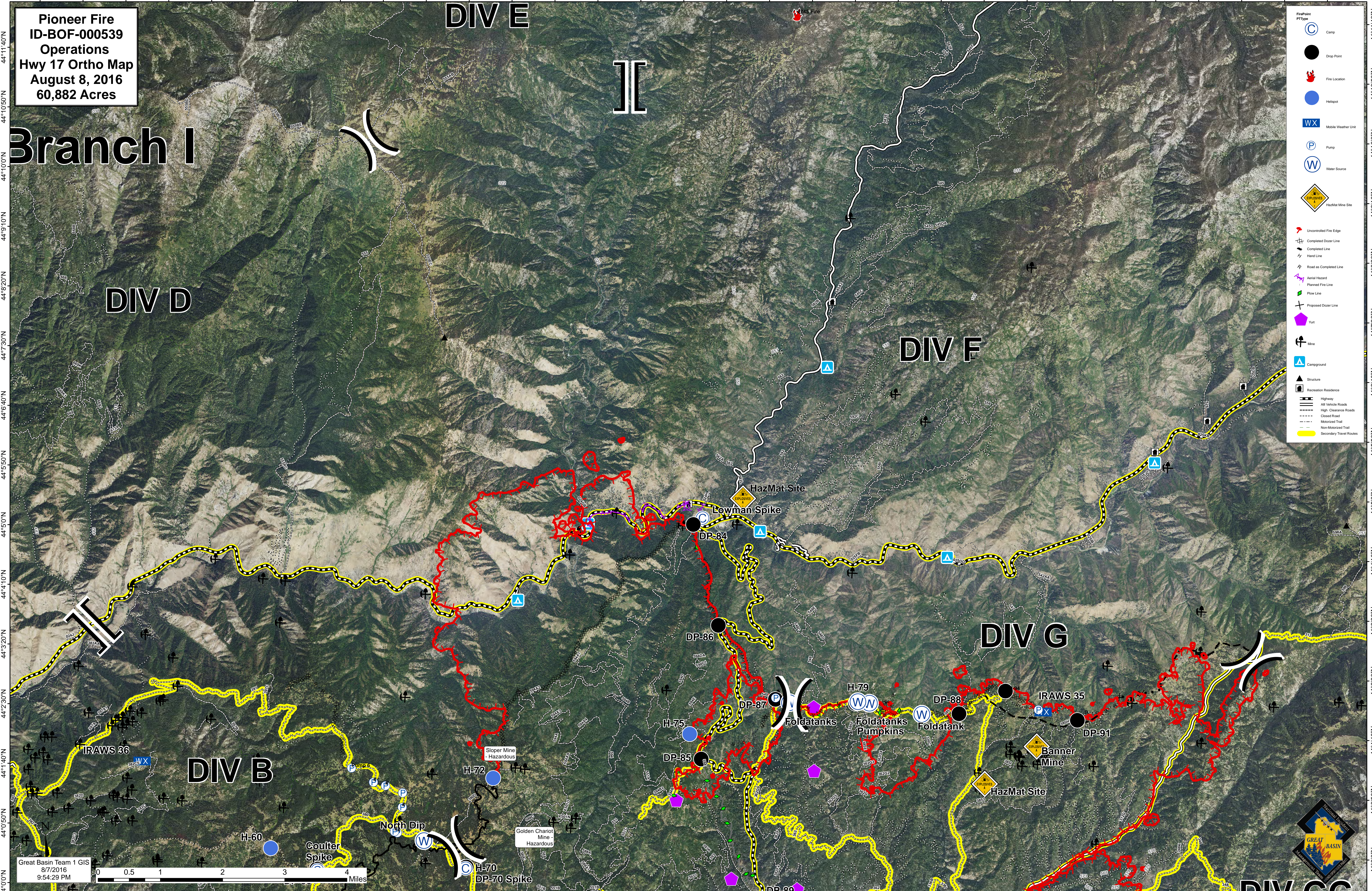
DIV D

DIV F

DIV G

DIV B

- FirePoint PType**
- Camp
 - Drop Point
 - Fire Location
 - Helipad
 - Mobile Weather Unit
 - Pump
 - Water Source
 - HazMat Mine Site
- Line Types**
- Uncontrolled Fire Edge
 - Completed Dozer Line
 - Completed Line
 - Hard Line
 - Road as Completed Line
 - Aerial Hazard
 - Planned Fire Line
 - Plow Line
 - Proposed Dozer Line
 - Yurt
 - Mine
 - Campground
 - Structure
 - Recreation Residence
 - Highway
 - All Vehicle Roads
 - High Clearance Roads
 - Closed Road
 - Motorized Trail
 - Non-Motorized Trail
 - Secondary Travel Routes



Great Basin Team 1 GIS
8/7/2016
9:54:29 PM



115°50'0"W 115°49'10"W 115°48'20"W 115°47'30"W 115°46'40"W 115°45'50"W 115°45'0"W 115°44'10"W 115°43'20"W 115°42'30"W 115°41'40"W 115°40'50"W 115°40'0"W 115°39'10"W 115°38'20"W 115°37'30"W 115°36'40"W 115°35'50"W 115°35'0"W 115°34'10"W 115°33'20"W 115°32'30"W 115°31'40"W 115°30'50"W 115°30'0"W 115°29'10"W 115°28'20"W 115°27'30"W 115°26'40"W 115°25'50"W 115°25'0"W