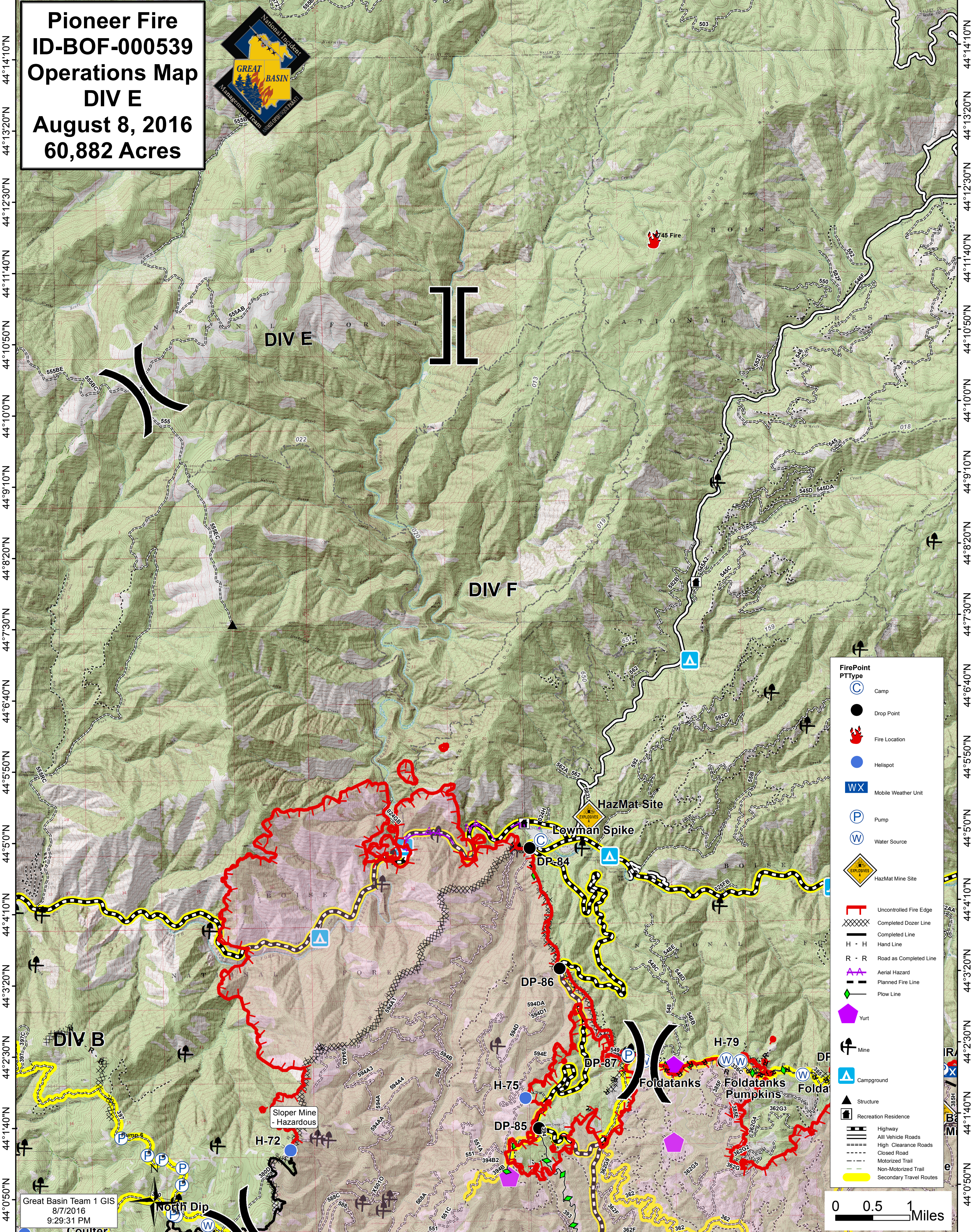


115°44'10"W 115°42'30"W 115°40'50"W 115°39'10"W 115°37'30"W 115°35'50"W 115°34'10"W 115°32'30"W 115°30'50"W

Pioneer Fire
ID-BOF-000539
Operations Map
DIV E
August 8, 2016
60,882 Acres



- FirePoint PType**
- Camp
 - Drop Point
 - Fire Location
 - Helispot
 - Mobile Weather Unit
 - Pump
 - Water Source
 - HazMat Mine Site
 - Uncontrolled Fire Edge
 - Completed Dozer Line
 - Completed Line
 - Hand Line
 - Road as Completed Line
 - Aerial Hazard
 - Planned Fire Line
 - Plow Line
 - Yurt
 - Mine
 - Campground
 - Structure
 - Recreation Residence
 - Highway
 - All Vehicle Roads
 - High Clearance Roads
 - Closed Road
 - Motorized Trail
 - Non-Motorized Trail
 - Secondary Travel Routes

Great Basin Team 1 GIS
8/7/2016
9:29:31 PM

0 0.5 1 Miles

115°45'50"W 115°44'10"W 115°42'30"W 115°40'50"W 115°39'10"W 115°37'30"W 115°35'50"W 115°34'10"W 115°32'30"W 115°30'50"W