

115°43'20"W 115°42'30"W 115°41'40"W 115°40'50"W 115°40'0"W 115°39'10"W 115°38'20"W 115°37'30"W 115°36'40"W

# Pioneer Fire ID-BOF-000539 Operations Map DIV I August 8, 2016 60,882 Acres

Mademoiselle Mine - Hole in Road

IRAWS CMD 2

DP-90

DP-91

Fold Tank 1

Sunset Dip

Fold Tank 2

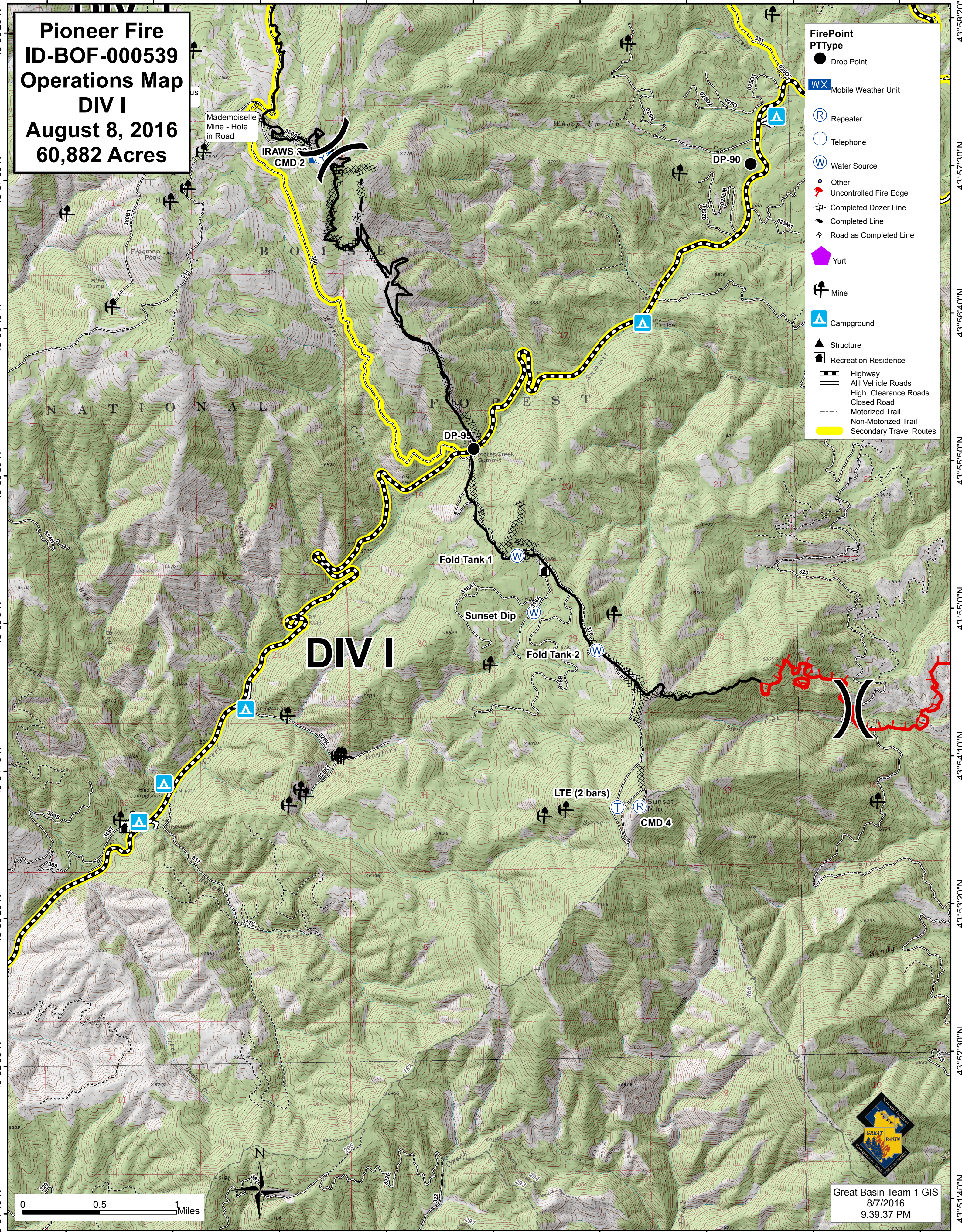
LTE (2 bars)

Sunset Mtn CMD 4

# DIV I

**FirePoint PType**

- Drop Point
- WX Mobile Weather Unit
- Ⓡ Repeater
- Ⓣ Telephone
- Ⓦ Water Source
- Other
- 🔥 Uncontrolled Fire Edge
- ⚡ Completed Dozer Line
- 🖱 Completed Line
- 🛣 Road as Completed Line
- 🏠 Yurt
- ⚡ Mine
- Ⓜ Campground
- ▲ Structure
- 🏠 Recreation Residence
- 🛣 Highway
- 🛣 All Vehicle Roads
- 🛣 High Clearance Roads
- 🛣 Closed Road
- 🛣 Motorized Trail
- 🛣 Non-Motorized Trail
- 🛣 Secondary Travel Routes



Great Basin Team 1 GIS  
8/7/2016  
9:39:37 PM

115°43'20"W 115°42'30"W 115°41'40"W 115°40'50"W 115°40'0"W 115°39'10"W 115°38'20"W 115°37'30"W 115°36'40"W