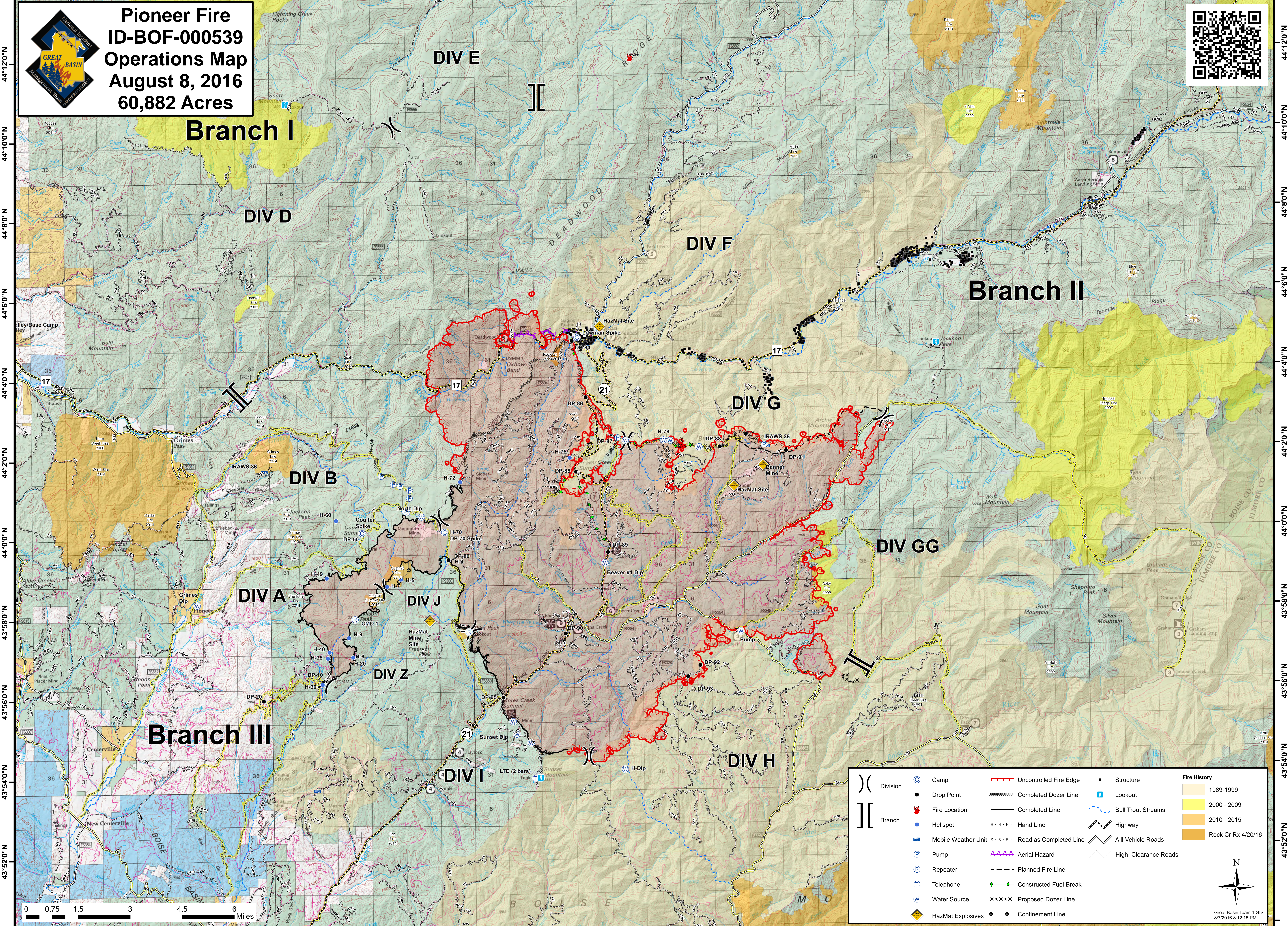


115°56'0"W 115°54'0"W 115°52'0"W 115°50'0"W 115°48'0"W 115°46'0"W 115°44'0"W 115°42'0"W 115°40'0"W 115°38'0"W 115°36'0"W 115°34'0"W 115°32'0"W 115°30'0"W 115°28'0"W 115°26'0"W 115°24'0"W 115°22'0"W 115°20'0"W 115°18'0"W 115°16'0"W 115°14'0"W



Pioneer Fire
ID-BOF-000539
Operations Map
August 8, 2016
60,882 Acres

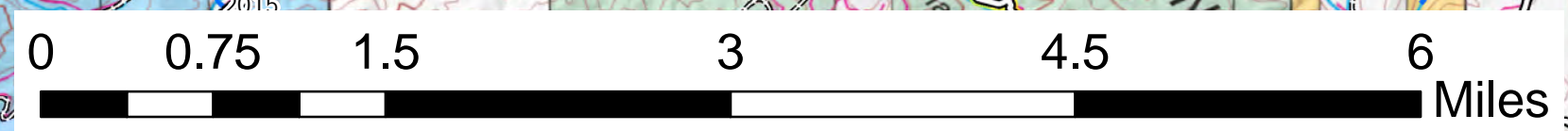


Branch I

Branch II

Branch III

	Division		Camp		Uncontrolled Fire Edge		Structure	Fire History	
	Branch		Drop Point		Completed Dozer Line		Lookout		1989-1999
			Fire Location		Completed Line		Bull Trout Streams		2000-2009
			Helispot		Hand Line		Highway		2010-2015
			Mobile Weather Unit		Road as Completed Line		All Vehicle Roads		Rock Cr Rx 4/20/16
			Pump		Aerial Hazard		High Clearance Roads		
			Repeater		Planned Fire Line				
			Telephone		Constructed Fuel Break				
			Water Source		Proposed Dozer Line				
			HazMat Explosives		Confinement Line				



115°56'0"W 115°54'0"W 115°52'0"W 115°50'0"W 115°48'0"W 115°46'0"W 115°44'0"W 115°42'0"W 115°40'0"W 115°38'0"W 115°36'0"W 115°34'0"W 115°32'0"W 115°30'0"W 115°28'0"W 115°26'0"W 115°24'0"W 115°22'0"W 115°20'0"W 115°18'0"W 115°16'0"W 115°14'0"W