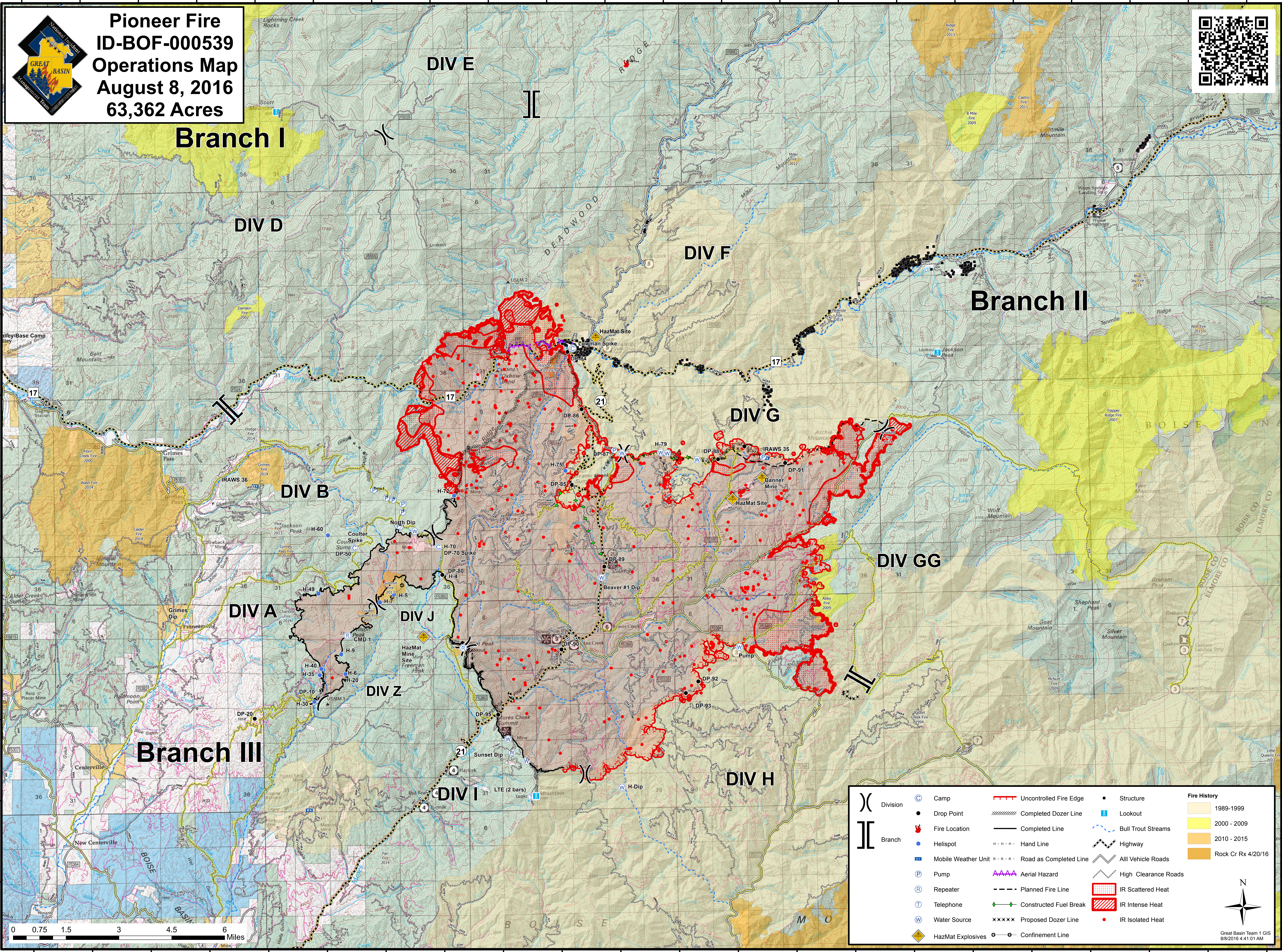


115°56'0"W 115°54'0"W 115°52'0"W 115°50'0"W 115°48'0"W 115°46'0"W 115°44'0"W 115°42'0"W 115°40'0"W 115°38'0"W 115°36'0"W 115°34'0"W 115°32'0"W 115°30'0"W 115°28'0"W 115°26'0"W 115°24'0"W 115°22'0"W 115°20'0"W 115°18'0"W 115°16'0"W 115°14'0"W



Pioneer Fire
ID-BOF-000539
Operations Map
August 8, 2016
63,362 Acres

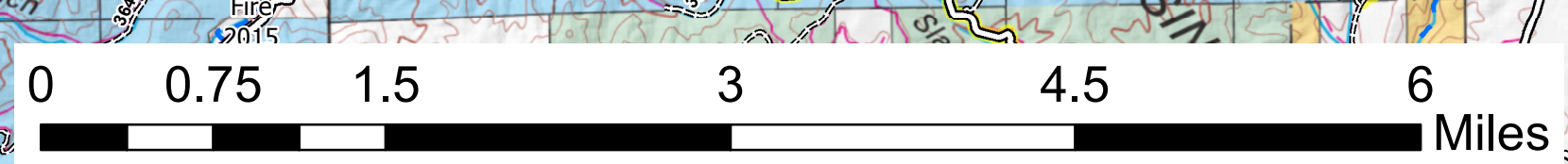


Branch I

Branch II

Branch III

(X)	Division	(C)	Camp	(---)	Uncontrolled Fire Edge	(■)	Structure	(■)	Fire History
()	Branch	(●)	Drop Point	(---)	Completed Dozer Line	(■)	Lookout	(■)	1989-1999
		(●)	Fire Location	(---)	Completed Line	(---)	Bull Trout Streams	(■)	2000 - 2009
		(●)	Helispot	(---)	Hand Line	(---)	Highway	(■)	2010 - 2015
		(●)	Mobile Weather Unit	(---)	Road as Completed Line	(---)	All Vehicle Roads	(■)	Rock Cr Rx 4/20/16
		(P)	Pump	(---)	Aerial Hazard	(---)	High Clearance Roads		
		(R)	Repeater	(---)	Planned Fire Line	(---)	IR Scattered Heat		
		(T)	Telephone	(---)	Constructed Fuel Break	(---)	IR Intense Heat		
		(W)	Water Source	(---)	Proposed Dozer Line	(●)	IR Isolated Heat		
		(♦)	HazMat Explosives	(---)	Confinement Line				



Great Basin Team 1 GIS
8/8/2016 4:41:01 AM

115°56'0"W 115°54'0"W 115°52'0"W 115°50'0"W 115°48'0"W 115°46'0"W 115°44'0"W 115°42'0"W 115°40'0"W 115°38'0"W 115°36'0"W 115°34'0"W 115°32'0"W 115°30'0"W 115°28'0"W 115°26'0"W 115°24'0"W 115°22'0"W 115°20'0"W 115°18'0"W 115°16'0"W 115°14'0"W