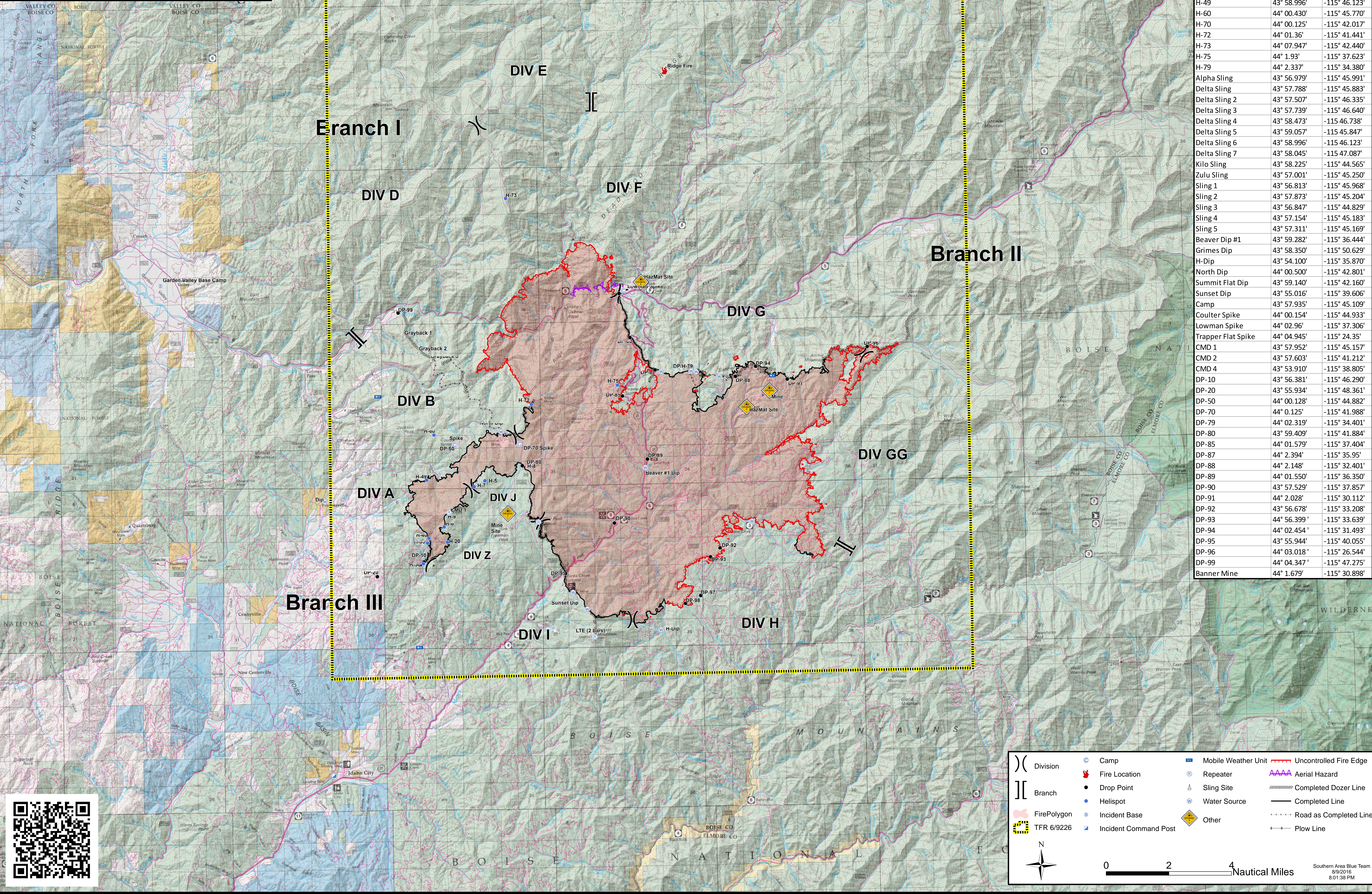




Pioneer Fire
ID-BOF-000539
Air Ops Map
August 10, 2016
64,351 Acres

Pioneer Fire ID-BOF-000539

Fire Points	Lat	Long
H-4	43° 59.409'	-115° 41.884'
H-5	43° 58.945'	-115° 43.549'
H-6	43° 57.490'	-115° 45.379'
H-7	43° 58.76'	-115° 44.029'
H-9	43° 57.952'	-115° 45.157'
H-20	43° 57.002'	-115° 45.243'
H-30	43° 56.331'	-115° 46.320'
H-35	43° 56.985'	-115° 46.123'
H-40	43° 57.138'	-115° 46.060'
H-49	43° 58.996'	-115° 46.123'
H-60	44° 00.430'	-115° 45.770'
H-70	44° 00.125'	-115° 42.017'
H-72	44° 01.36'	-115° 41.441'
H-73	44° 07.947'	-115° 42.440'
H-75	44° 1.93'	-115° 37.623'
H-79	44° 2.337'	-115° 34.380'
Alpha Sling	43° 56.979'	-115° 45.991'
Delta Sling	43° 57.788'	-115° 45.883'
Delta Sling 2	43° 57.507'	-115° 46.335'
Delta Sling 3	43° 57.739'	-115° 46.640'
Delta Sling 4	43° 58.473'	-115 46.738'
Delta Sling 5	43° 59.057'	-115 45.847'
Delta Sling 6	43° 58.996'	-115 46.123'
Delta Sling 7	43° 58.045'	-115 47.087'
Kilo Sling	43° 58.225'	-115° 44.565'
Zulu Sling	43° 57.001'	-115° 45.250'
Sling 1	43° 56.813'	-115° 45.968'
Sling 2	43° 57.873'	-115° 45.204'
Sling 3	43° 56.847'	-115° 44.829'
Sling 4	43° 57.154'	-115° 45.183'
Sling 5	43° 57.311'	-115° 45.169'
Beaver Dip #1	43° 59.282'	-115° 36.444'
Grimes Dip	43° 58.350'	-115° 50.629'
H-Dip	43° 54.100'	-115° 35.870'
North Dip	44° 00.500'	-115° 42.801'
Summit Flat Dip	43° 59.140'	-115° 42.160'
Sunset Dip	43° 55.016'	-115° 39.606'
Camp	43° 57.935'	-115° 45.109'
Coulter Spike	44° 00.154'	-115° 44.933'
Lowman Spike	44° 02.96'	-115° 37.306'
Trapper Flat Spike	44° 04.945'	-115° 24.35'
CMD 1	43° 57.952'	-115° 45.157'
CMD 2	43° 57.603'	-115° 41.212'
CMD 4	43° 53.910'	-115° 38.805'
DP-10	43° 56.381'	-115° 46.290'
DP-20	43° 55.934'	-115° 48.361'
DP-50	44° 00.128'	-115° 44.882'
DP-70	44° 0.125'	-115° 41.988'
DP-79	44° 02.319'	-115° 34.401'
DP-80	43° 59.409'	-115° 41.884'
DP-85	44° 01.579'	-115° 37.404'
DP-87	44° 2.394'	-115° 35.95'
DP-88	44° 2.148'	-115° 32.401'
DP-89	44° 01.550'	-115° 36.350'
DP-90	43° 57.529'	-115° 37.857'
DP-91	44° 2.028'	-115° 30.112'
DP-92	43° 56.678'	-115° 33.208'
DP-93	44° 56.399'	-115° 33.639'
DP-94	44° 02.454'	-115° 31.493'
DP-95	43° 55.944'	-115° 40.055'
DP-96	44° 03.018'	-115° 26.544'
DP-99	44° 04.347'	-115° 47.275'
Banner Mine	44° 1.679'	-115° 30.898'



Legend

- Division (Double line symbol)
- Branch (Double line with crossbar symbol)
- Fire Polygon (Red outline symbol)
- TFR 6/9226 (Yellow dashed line symbol)
- Camp (Blue circle symbol)
- Fire Location (Red flame symbol)
- Drop Point (Black dot symbol)
- Helispot (Blue dot symbol)
- Incident Base (Blue circle with 'I' symbol)
- Incident Command Post (Blue square with 'I' symbol)
- Mobile Weather Unit (Blue square with 'M' symbol)
- Repeater (Blue circle with 'R' symbol)
- Sling Site (Blue circle with 'S' symbol)
- Water Source (Blue circle with 'W' symbol)
- Other (Yellow diamond symbol)
- Uncontrolled Fire Edge (Red dashed line symbol)
- Aerial Hazard (Red dashed line with 'A' symbol)
- Completed Dozer Line (Dotted line symbol)
- Completed Line (Solid black line symbol)
- Road as Completed Line (Dashed black line symbol)
- Plow Line (Green line with cross-ticks symbol)

Scale: 0 2 4 Nautical Miles

Southern Area Blue Team
8/9/2016
8:01:38 PM