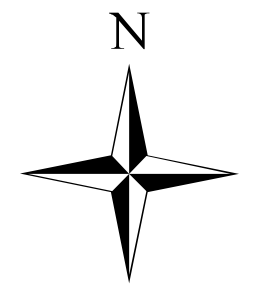


Pioneer Fire
ID-BOF-000539
August 10, 2016
64,351 Acres

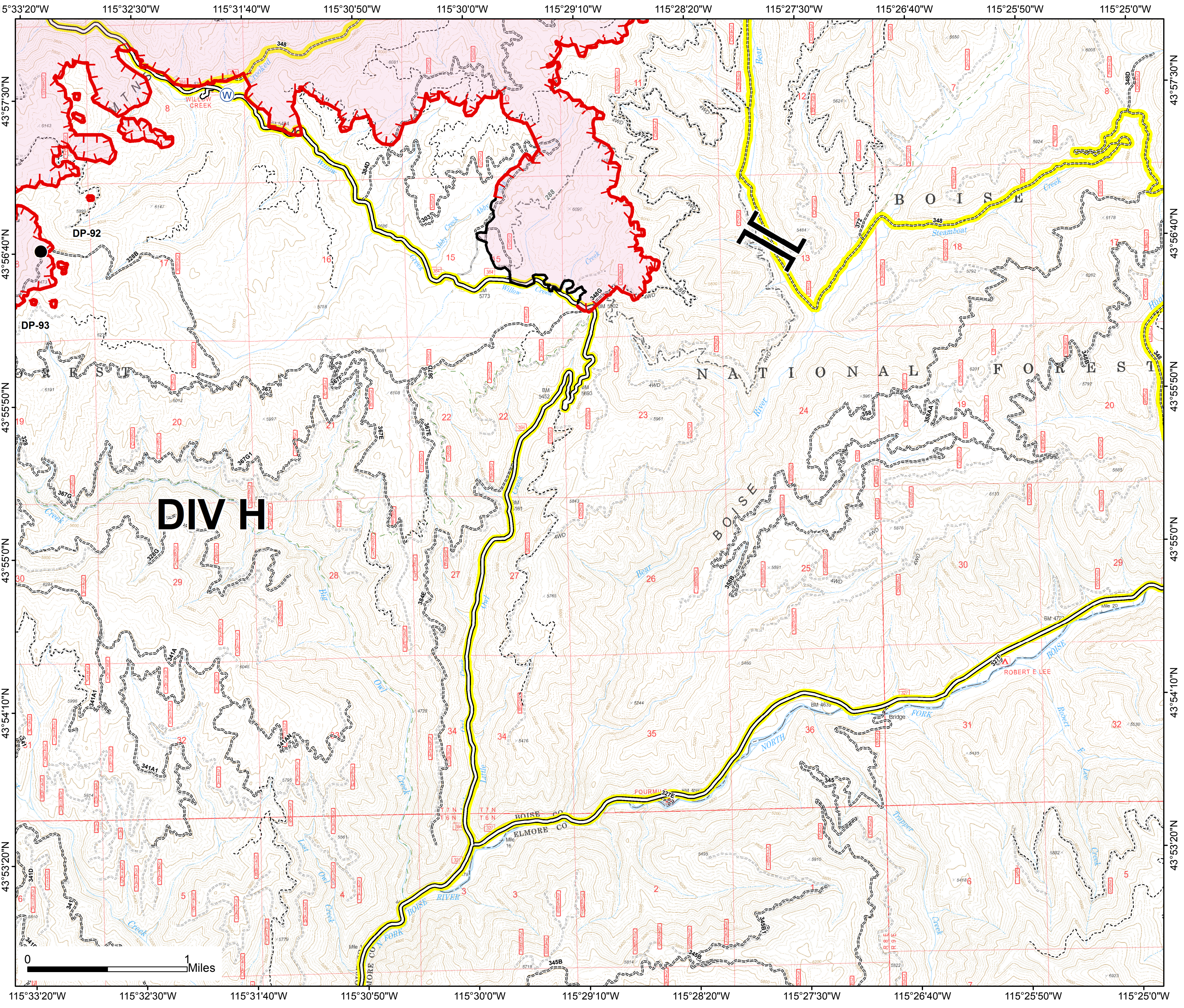
DIV H
Page 10



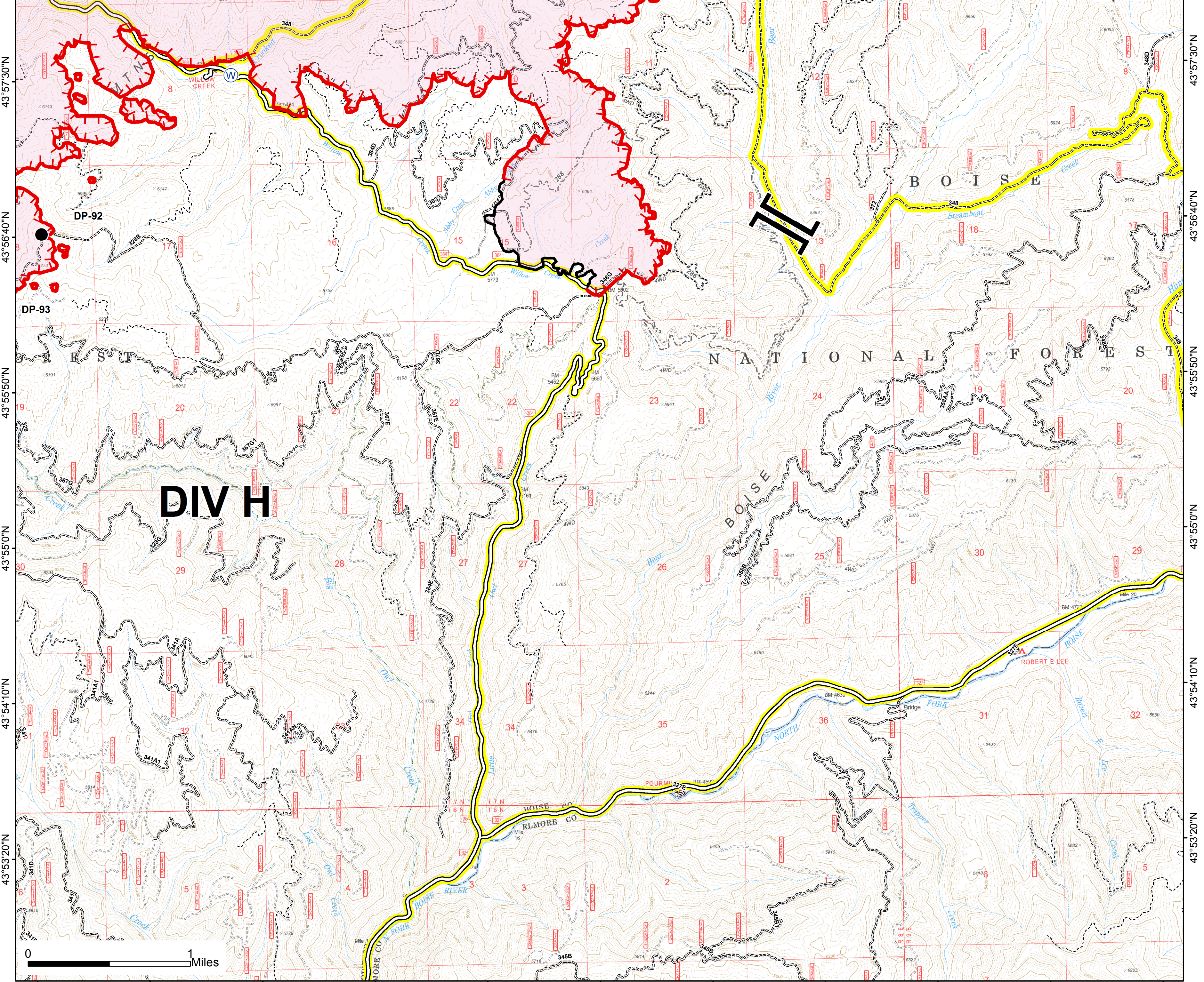
- FirePoint
PType**
- Drop Point
 - Ⓜ Water Source
 - 🔥 Uncontrolled Fire Edge
 - Completed Line
 - ▭ Fire Polygon
 - All Vehicle Roads
 - High Clearance Roads
 - Closed Road
 - Motorized Trail
 - Non-Motorized Trail
 - Secondary Travel Routes



Southern Area Blue Team
8/9/2016
11:41:33 PM



115°33'20"W 115°32'30"W 115°31'40"W 115°30'50"W 115°30'0"W 115°29'10"W 115°28'20"W 115°27'30"W 115°26'40"W 115°25'50"W 115°25'0"W



115°33'20"W 115°32'30"W 115°31'40"W 115°30'50"W 115°30'0"W 115°29'10"W 115°28'20"W 115°27'30"W 115°26'40"W 115°25'50"W 115°25'0"W

43°57'30"N
43°56'40"N
43°55'50"N
43°55'0"N
43°54'10"N
43°53'20"N

43°57'30"N
43°56'40"N
43°55'50"N
43°55'0"N
43°54'10"N
43°53'20"N