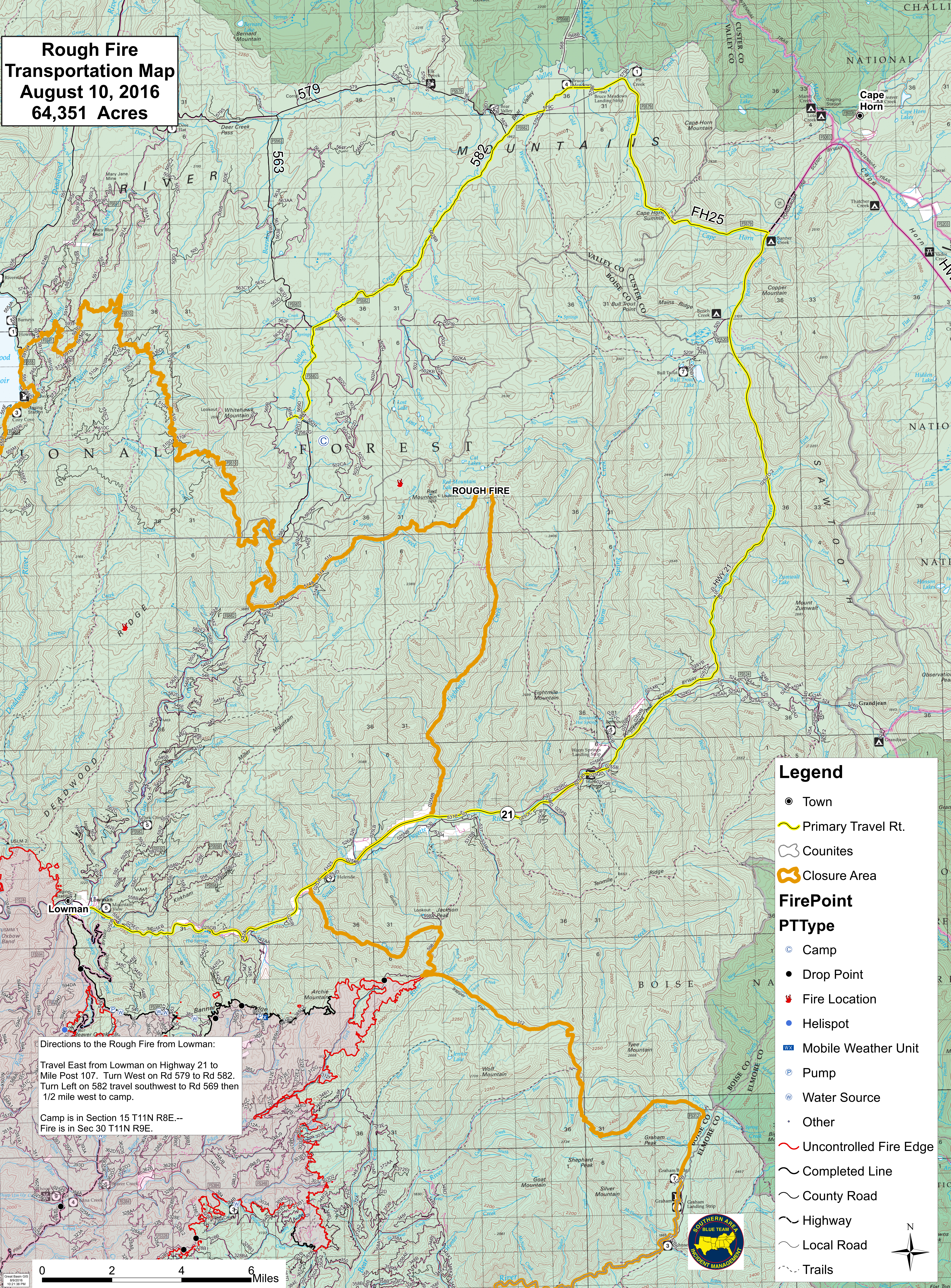


**Rough Fire  
Transportation Map  
August 10, 2016  
64,351 Acres**



Directions to the Rough Fire from Lowman:  
Travel East from Lowman on Highway 21 to Mile Post 107. Turn West on Rd 579 to Rd 582. Turn Left on 582 travel southwest to Rd 569 then 1/2 mile west to camp.  
Camp is in Section 15 T11N R8E.--  
Fire is in Sec 30 T11N R9E.

**Legend**

- Town
- Primary Travel Rt.
- Counties
- Closure Area

**FirePoint**

**PTType**

- Ⓢ Camp
- Drop Point
- 🔥 Fire Location
- Helispot
- ☒ Mobile Weather Unit
- Ⓟ Pump
- Ⓜ Water Source
- Other
- Uncontrolled Fire Edge
- Completed Line
- County Road
- Highway
- Local Road
- Trails

