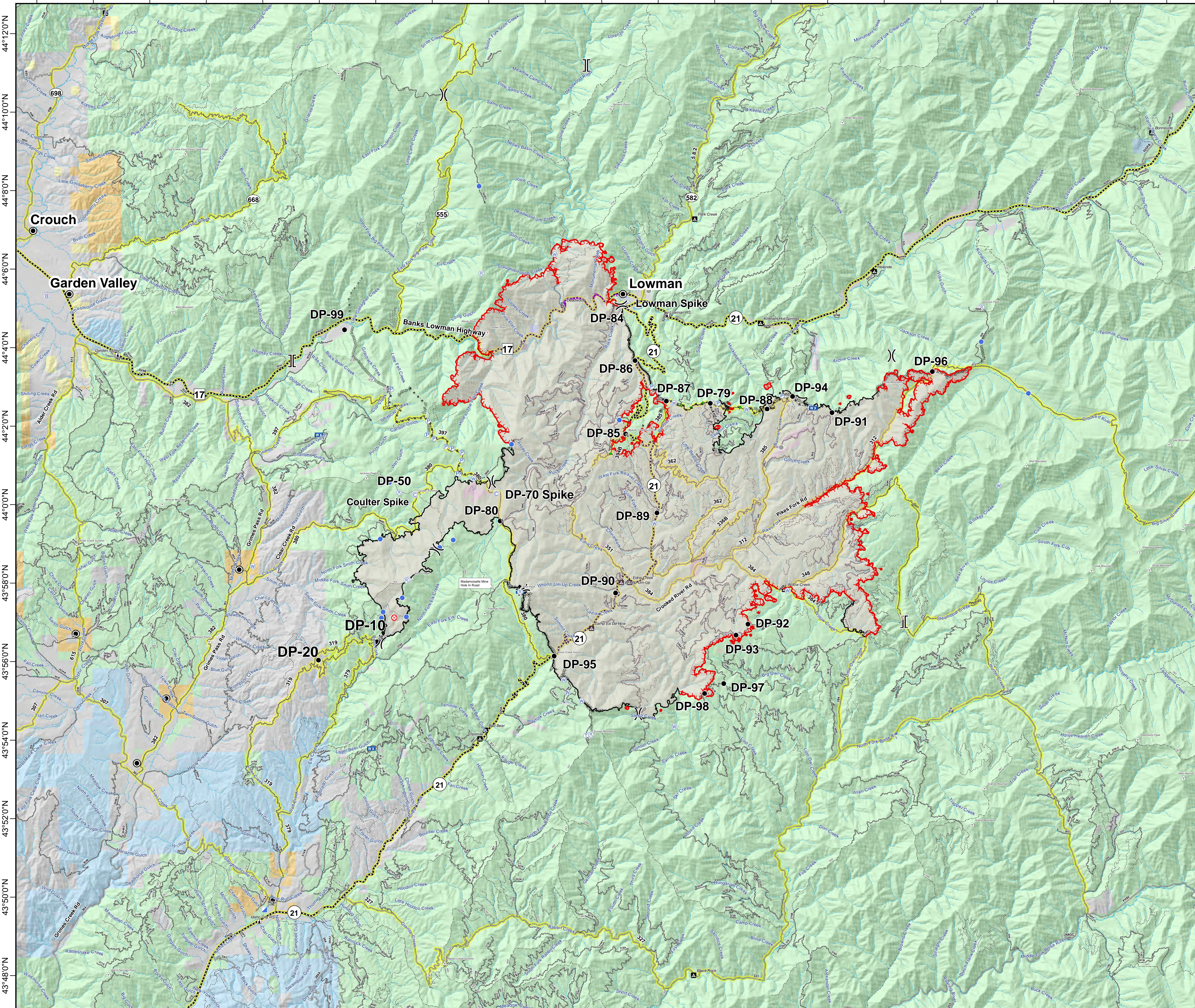


115°58'0"W 115°56'0"W 115°54'0"W 115°52'0"W 115°50'0"W 115°48'0"W 115°46'0"W 115°44'0"W 115°42'0"W 115°40'0"W 115°38'0"W 115°36'0"W 115°34'0"W 115°32'0"W 115°30'0"W 115°28'0"W 115°26'0"W 115°24'0"W 115°22'0"W 115°20'0"W 115°18'0"W



# Pioneer Fire ID-BOF-000539 Transportation Map August 11, 2016 64,786 Acres

- Legend**
- Camp
  - Drop Point
  - Fire Origin
  - Helispot
  - Incident Base
  - Incident Command Post
  - Mobile Weather Unit
  - Pump
  - Repeater
  - Sling Site
  - Telephone
  - Water Source
  - Other
  - Division Break
  - Branch Break
  - Uncontrolled Fire Edge
  - Completed Line
  - Road as Completed Line
  - Completed Dozer Line
  - Hand Line
  - Plow Line
  - Aerial Hazard
  - Wildfire Daily Fire Perimeter
  - Town
  - Mountain Peak
  - Ranger Station
  - Campground
  - Highway
  - All Vehicle Roads
  - High Clearance Roads
  - Secondary Travel Routes
  - Streams





Southern Area Blue Team  
8/10/2016  
9:08:02 PM



0 1 2 3 4  
Miles

115°58'0"W 115°56'0"W 115°54'0"W 115°52'0"W 115°50'0"W 115°48'0"W 115°46'0"W 115°44'0"W 115°42'0"W 115°40'0"W 115°38'0"W 115°36'0"W 115°34'0"W 115°32'0"W 115°30'0"W 115°28'0"W 115°26'0"W 115°24'0"W 115°22'0"W 115°20'0"W 115°18'0"W