

Pioneer Fire
ID-BOF-000539
August 11, 2016
64,786 Acres

DIV B / DIV D
Page 3

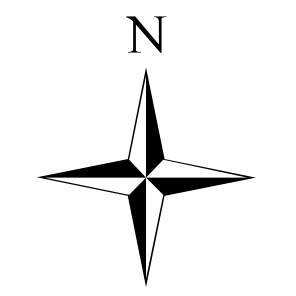


EventPoint
Feature Category (Point Type)

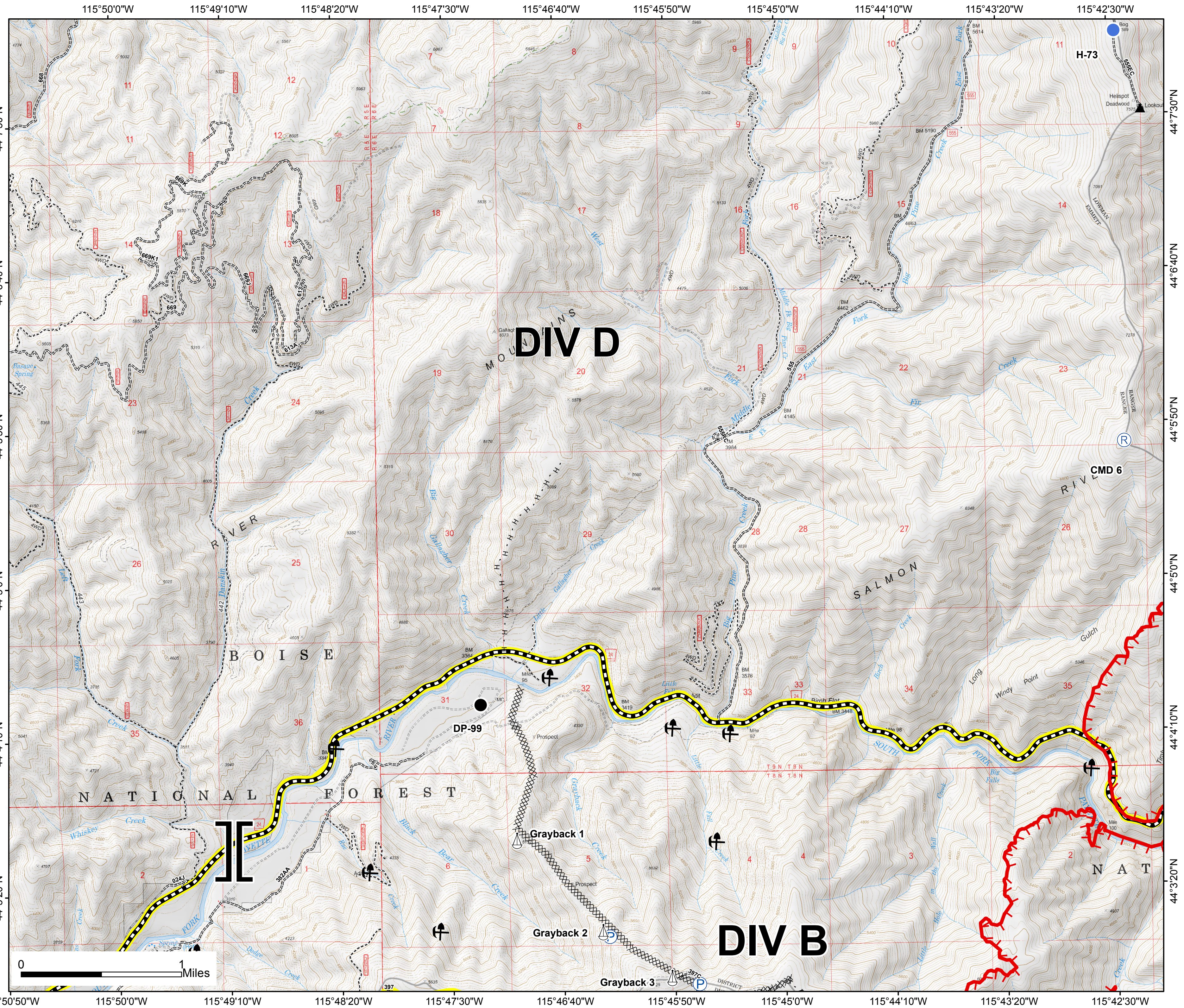
- Drop Point
- Hellsport
- Ⓟ Pump
- Ⓡ Repeater
- ⚓ Sling Site
- || Branch Break

EventLine
Feature Category (Line Type)

- 🔥 Uncontrolled Fire Edge
- ⚡ Road as Completed Line
- ⚡ Completed Dozer Line
- ⚡ Hand Line
- ⚡ Mine
- ▲ Structure
- 🛣 Highway
- 🛣 All Vehicle Roads
- 🛣 High Clearance Roads
- 🛣 Closed Road
- 🛣 Motorized Trail
- 🛣 Non-Motorized Trail
- 🛣 Secondary Travel Routes



Southern Area Blue Team
8/10/2016
9:04:01 PM



115°50'50"W 115°50'00"W 115°49'10"W 115°48'20"W 115°47'30"W 115°46'40"W 115°45'50"W 115°45'00"W 115°44'10"W 115°43'20"W 115°42'30"W

44°7'30"N
44°6'40"N
44°5'50"N
44°5'00"N
44°4'10"N
44°3'20"N