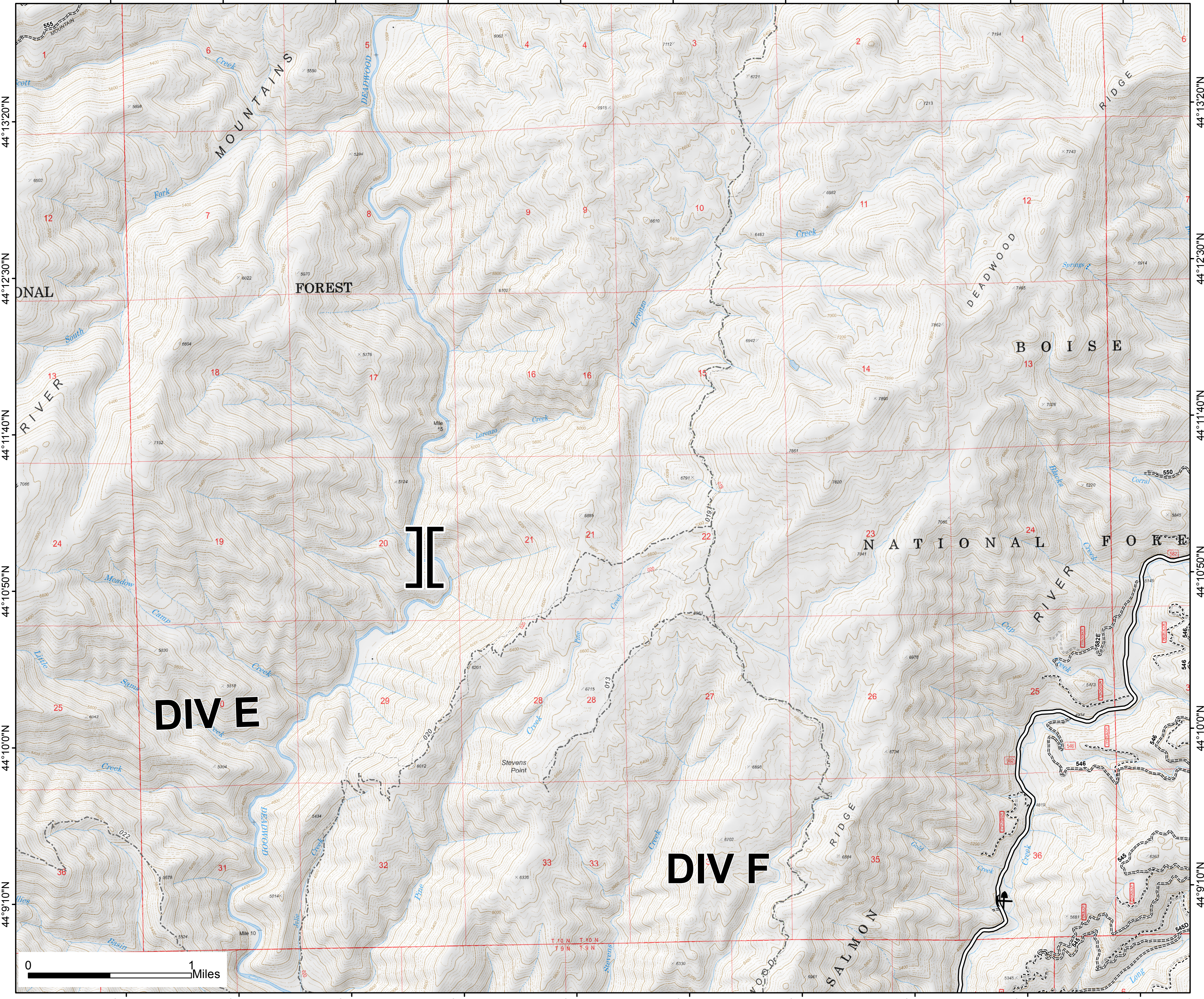


115°40'50"W 115°40'0"W 115°39'10"W 115°38'20"W 115°37'30"W 115°36'40"W 115°35'50"W 115°35'0"W 115°34'10"W 115°33'20"W

Pioneer Fire
ID-BOF-000539
August 11, 2016
64,786 Acres

DIV E / DIV F
Page 5



44°13'20"N
44°12'30"N
44°11'40"N
44°10'50"N
44°10'0"N
44°9'10"N

44°13'20"N
44°12'30"N
44°11'40"N
44°10'50"N
44°10'0"N
44°9'10"N

EventPoint
Feature Category (Point Type)

|| Branch Break

⚡ Mine

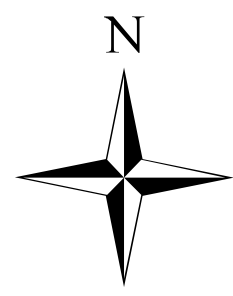
||| All Vehicle Roads

==== High Clearance Roads

---- Closed Road

-.-.- Motorized Trail

--- Non-Motorized Trail



Southern Area Blue Team
8/10/2016
10:14:45 PM



115°40'50"W 115°40'0"W 115°39'10"W 115°38'20"W 115°37'30"W 115°36'40"W 115°35'50"W 115°35'0"W 115°34'10"W 115°33'20"W