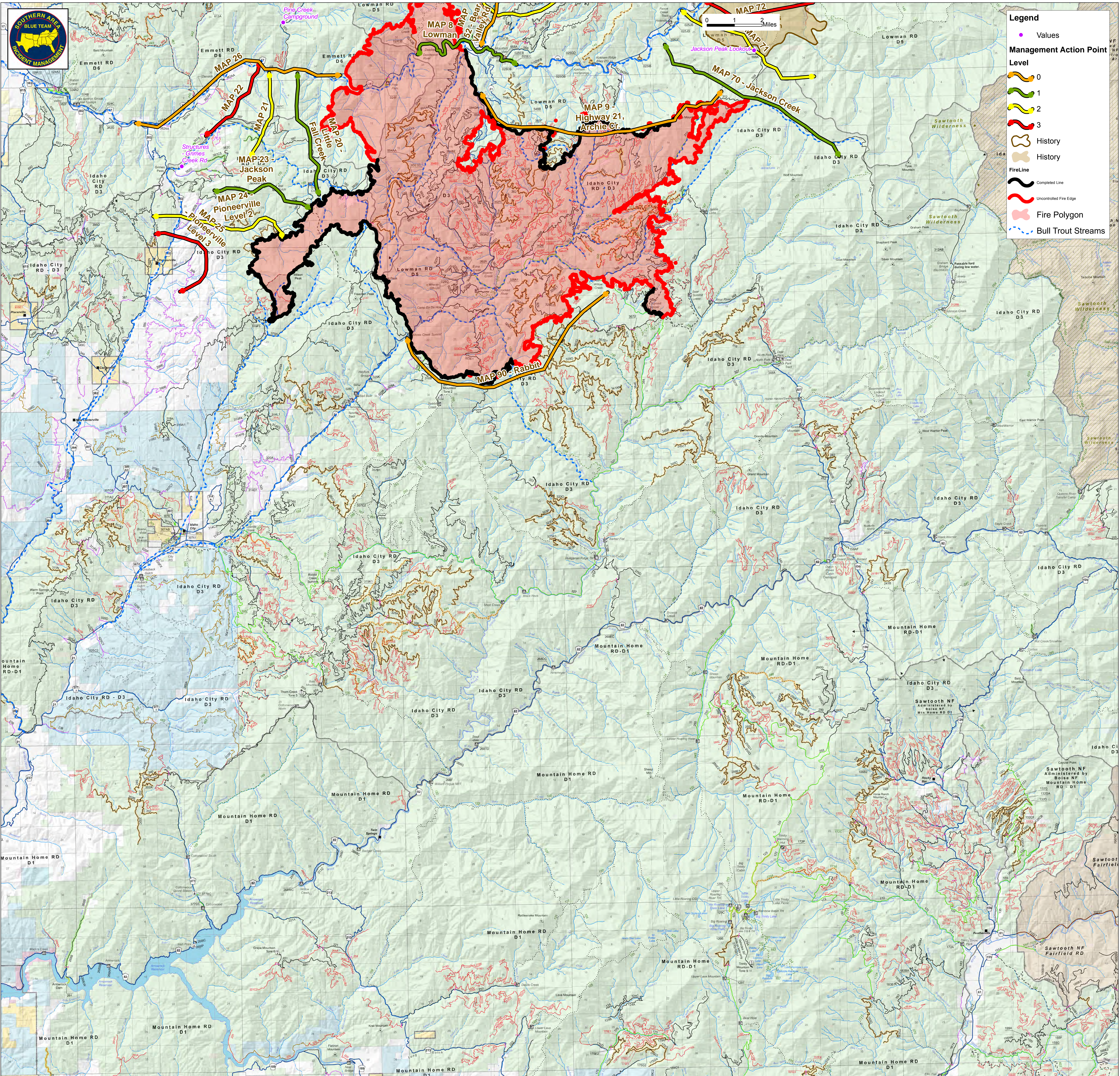




Pioneer Fire Strategic Ops Map

August 12, 2016

66,884 Acres



Legend

- Values
- Management Action Point
- Level
 - 0
 - 1
 - 2
 - 3
- History
- History
- FireLine
 - Completed Line
 - Uncontrolled Fire Edge
- Fire Polygon
- Bull Trout Streams

- Pioneer Fire - Management Action Points - 8/9/2016
- Management Action Point 9**
 Condition
 Spatial - Fire becomes established north of Forest Service road 385.
 and
 Temporal - Shrub/Grass component becomes available to support active fire spread.
 Action
 • Consider public safety along Highway 21 corridor and within Archie Creek. Evaluate the need for Level 1 evacuations
 • Evaluate structure protection needs for Highway 21 corridor from Lowman to Forest Service Road 542 (Archie Creek)
 Consider public safety:
 • Highway 21
 • South Fork of the Payette River
 • Kirkham Campground
- Management Action Point 20**
 Condition
 Fire becomes established or is anticipated to cross MAP 20
 Action
 Consider Level 1 Evacuations for structures on Hwy 17 from Forest Service Road 555 to Forest Service Road 382
 Consider public safety on Highway 17. Recommend Highway closure from Forest Service Road 382, east to Lowman.
 Make contact with Idaho Power Company to de-energize powerlines on along Hwy 17 if threatened
- Management Action Point 21**
 Condition
 Fire becomes established or is anticipated to cross MAP 21
 Action
 Consider Level 2 Evacuations for structures on Hwy 17 from Forest Service Road 555 to Forest Service Road 382
 Consider public safety on Highway 17. Recommend Highway closure from Forest Service Road 382, east to Lowman.
 Make contact with Idaho Power Company to de-energize powerlines on along Hwy 17 if threatened
- Management Action Point 22**
 Condition
 Fire becomes established or is anticipated to cross MAP 22
 Action
 Consider Level 3 Evacuations for structures on Hwy 17 from Forest Service Road 555 to Forest Service Road 382
 Consider public safety on Highway 17. Recommend Highway closure from Forest Service Road 382, east to Lowman.
 Make contact with Idaho Power Company to de-energize powerlines on along Hwy 17 if threatened
- Management Action Point 23**
 Condition
 Fire becomes established or is anticipated to cross MAP 23
 Action
 Consider Level 1 Evacuations for Pioneerville
 Consider structure protection for homes in Grimes Pass area
- Management Action Point 24**
 Condition
 Fire becomes established or is anticipated to cross MAP 24
 Action
 Consider Level 2 Evacuations for Pioneerville
 Consider structure protection for homes in Grimes Pass area
- Management Action Point 25**
 Condition
 Fire becomes established or is anticipated to cross MAP 25
 Action
 Consider Level 3 Evacuations for Pioneerville
 Consider structure protection for homes in Grimes Pass area
- Management Action Point 26**
 Condition
 Fire gets established north of highway 17, west of current fire perimeter. Spotting over this MAP is likely if fire gets established to the west of Little Hole in the Wall Creek on the south side of the river.
 Action
 • Continue providing structure protection for Deadwood Lookout
 • Consider providing structure protection for Scott Mountain Lookout
 • Consider providing protection for BOR microwave communications site for Deadwood Dam
- Management Action Point 50**
 Condition
 Fire crosses or is anticipated to cross MAP 50
 Action
 • Consider level 2 evacuations of Long Creek summer homes
 • Consider level 2 evacuations of Park Creek Campground
- Management Action Point 51**
 Condition
 Fire crosses or is anticipated to cross MAP 51.
 Consider this implementing this Management Action Point if fire threatens FS road 562, which is the southern access to Long Creek summer homes and Park Creek Campground
 Action
 • Consider level 3 evacuations of Long Creek summer homes
 • Consider level 3 evacuations of Park Creek Campground
- Management Action Point 70**
 Condition
 Spatial - Fire becomes established to the east of MAP 70
 and
 Temporal - Shrub/Grass component becomes available to support active fire spread
 Action
 • Assess and consider structure protection for Jackson Peak Lookout
 Consider Level 1 Evacuations and structure prep for:
 • Upper Lowman
 • Ten Ax Subdivision
 • Two Raven
 • Alsager's Ranch
 Consider extending/continuing area/road/trail closures to the east
 Assess/model potential fire spread to the East/Northeast towards Grandjean
- Management Action Point 71**
 Condition
 Spatial - Fire becomes established to the east of MAP 71
 and
 Temporal - Shrub/Grass component becomes available to support active fire spread
 Action
 • Assess and consider structure protection for Jackson Peak Lookout
 Consider Level 2 evacuations and assessing structure protection needs for:
 • Upper Lowman
 • Ten Ax Subdivision
 • Two Raven
 • Alsager's Ranch
 Consider extending/continuing area/road/trail closures to the east
 Assess/model potential fire spread to the East/Northeast towards Grandjean
- Management Action Point 72**
 Condition
 Spatial - Fire becomes established to the east of MAP 71
 and
 Temporal - Shrub/Grass component becomes available to support active fire spread
 Action
 • Assess and consider structure protection for Jackson Peak Lookout
 Consider Level 3 evacuations and assessing structure protection needs for:
 • Upper Lowman
 • Ten Ax Subdivision
 • Two Raven
 • Alsager's Ranch
 Consider extending/continuing area/road/trail closures to the east
 Assess/model potential fire spread to the East/Northeast towards Grandjean
- Management Action Point 90**
 Condition
 Spatial - Fire becomes established south of current fire perimeter
 and
 Temporal - Shrub/Grass component becomes available to support active fire spread
 Action
 • Consider providing structure protection for Ten Mile Summer homes
 • Continue providing structure protection for Sunset Mountain Lookout
 • Consider public safety on Hwy 21 south of Mores Creek Summit