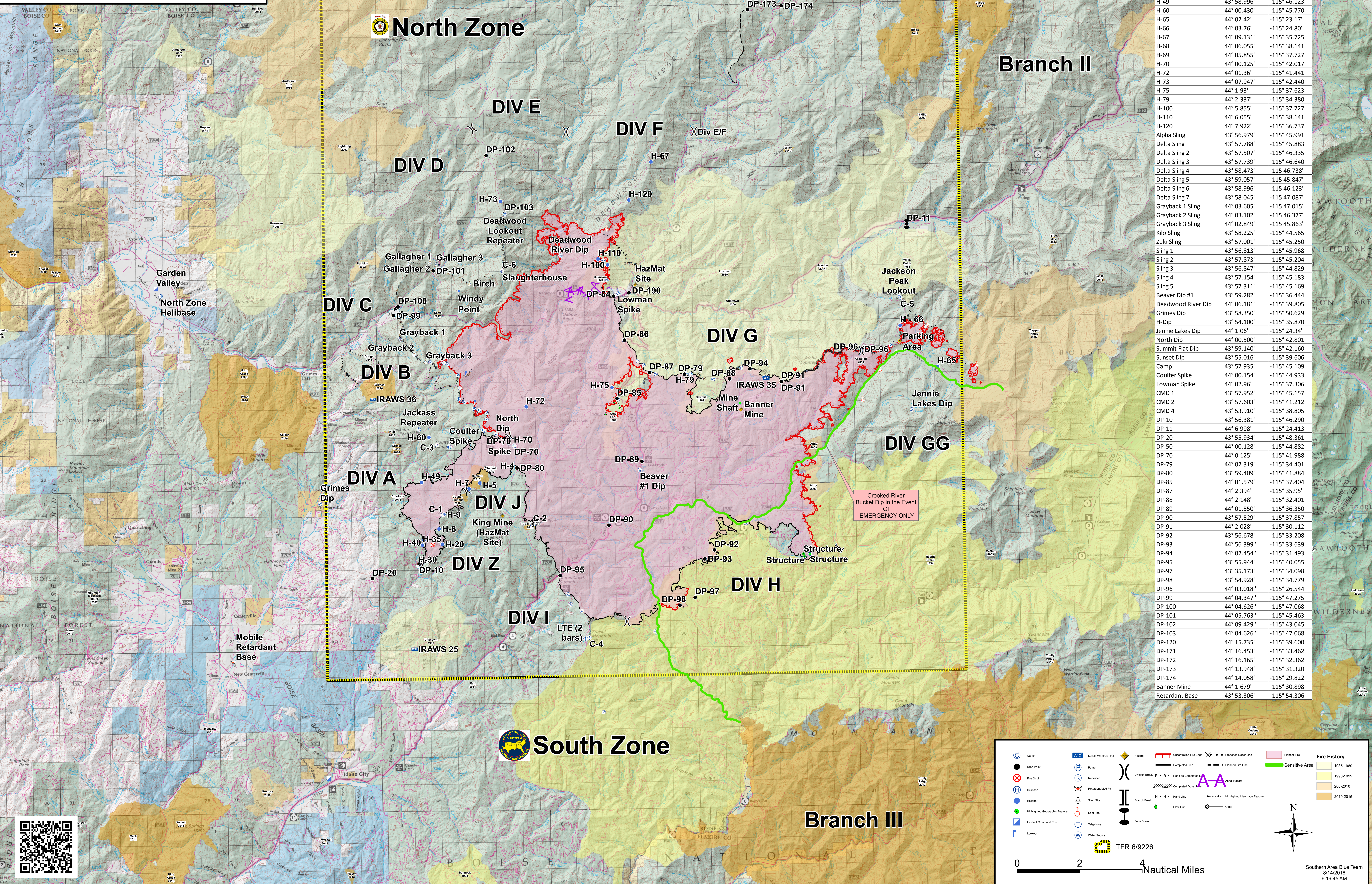




**Pioneer Fire**  
**ID-BOF-000539**  
**Air Ops Map**  
**August 14, 2016**  
**71,190 Acres**



**Pioneer Fire ID-BOF-000539**

Fire Points	Lat	Long
H-4	43° 59.409'	-115° 41.884'
H-5	43° 58.945'	-115° 43.549'
H-6	43° 57.490'	-115° 45.379'
H-7	43° 58.76'	-115° 44.029'
H-9	43° 57.952'	-115° 45.157'
H-20	43° 57.002'	-115° 45.243'
H-30	43° 56.331'	-115° 46.320'
H-35	43° 56.985'	-115° 46.123'
H-40	43° 57.138'	-115° 46.060'
H-49	43° 58.996'	-115° 46.123'
H-60	44° 00.430'	-115° 45.770'
H-65	44° 02.42'	-115° 23.17'
H-66	44° 03.76'	-115° 24.80'
H-67	44° 09.131'	-115° 35.725'
H-68	44° 06.055'	-115° 38.141'
H-69	44° 05.855'	-115° 37.727'
H-70	44° 00.125'	-115° 42.017'
H-72	44° 01.36'	-115° 41.441'
H-73	44° 07.947'	-115° 42.440'
H-75	44° 1.93'	-115° 37.623'
H-79	44° 2.337'	-115° 34.380'
H-100	44° 5.855'	-115° 37.727'
H-110	44° 6.055'	-115° 38.141'
H-120	44° 7.922'	-115° 36.737'
Alpha Sling	43° 56.979'	-115° 45.991'
Delta Sling	43° 57.788'	-115° 45.883'
Delta Sling 2	43° 57.507'	-115° 46.335'
Delta Sling 3	43° 57.739'	-115° 46.640'
Delta Sling 4	43° 58.473'	-115 46.738'
Delta Sling 5	43° 59.057'	-115 45.847'
Delta Sling 6	43° 58.996'	-115 46.123'
Delta Sling 7	43° 58.045'	-115 47.087'
Grayback 1 Sling	44° 03.605'	-115 47.015'
Grayback 2 Sling	44° 03.102'	-115 46.377'
Grayback 3 Sling	44° 02.849'	-115 45.863'
Kilo Sling	43° 58.225'	-115° 45.565'
Zulu Sling	43° 57.001'	-115° 45.250'
Sling 1	43° 56.813'	-115° 45.968'
Sling 2	43° 57.873'	-115° 45.204'
Sling 3	43° 56.847'	-115° 44.829'
Sling 4	43° 57.154'	-115° 45.183'
Sling 5	43° 57.311'	-115° 45.169'
Beaver Dip #1	43° 59.282'	-115° 36.444'
Deadwood River Dip	44° 06.181'	-115° 39.805'
Grimes Dip	43° 58.350'	-115° 50.629'
H-Dip	43° 54.100'	-115° 35.870'
Jennie Lakes Dip	44° 1.06'	-115° 24.34'
North Dip	44° 00.500'	-115° 42.801'
Summit Flat Dip	43° 59.140'	-115° 42.160'
Sunset Dip	43° 55.016'	-115° 39.606'
Camp	43° 57.935'	-115° 45.109'
Coulter Spike	44° 00.154'	-115° 44.933'
Lowman Spike	44° 02.96'	-115° 37.306'
CMD 1	43° 57.952'	-115° 45.157'
CMD 2	43° 57.603'	-115° 41.212'
CMD 4	43° 53.910'	-115° 38.805'
DP-10	43° 56.381'	-115° 46.290'
DP-11	44° 6.998'	-115° 24.413'
DP-20	43° 55.934'	-115° 48.361'
DP-50	44° 00.128'	-115° 44.882'
DP-70	44° 0.125'	-115° 41.988'
DP-79	44° 02.319'	-115° 34.401'
DP-80	43° 59.409'	-115° 41.884'
DP-85	44° 01.579'	-115° 37.404'
DP-87	44° 2.394'	-115° 35.95'
DP-88	44° 2.148'	-115° 32.401'
DP-89	44° 01.550'	-115° 36.350'
DP-90	43° 57.529'	-115° 37.857'
DP-91	44° 2.028'	-115° 30.112'
DP-92	43° 56.678'	-115° 33.208'
DP-93	44° 56.399'	-115° 33.639'
DP-94	44° 02.454'	-115° 31.493'
DP-95	43° 55.944'	-115° 40.055'
DP-97	43° 35.173'	-115° 34.098'
DP-98	43° 54.928'	-115° 34.779'
DP-96	44° 03.018'	-115° 26.544'
DP-99	44° 04.347'	-115° 47.275'
DP-100	44° 04.626'	-115° 47.068'
DP-101	44° 05.763'	-115° 45.463'
DP-102	44° 09.429'	-115° 43.045'
DP-103	44° 04.626'	-115° 47.068'
DP-120	44° 15.735'	-115° 39.600'
DP-171	44° 16.453'	-115° 33.462'
DP-172	44° 16.165'	-115° 32.362'
DP-173	44° 13.948'	-115° 31.320'
DP-174	44° 14.058'	-115° 29.822'
Banner Mine	44° 1.679'	-115° 30.898'
Retardant Base	43° 53.306'	-115° 54.306'

- Camp
- Drop Point
- Fire Origin
- Helibase
- Helipod
- Highlighted Geographic Feature
- Incident Command Post
- Lookout
- Mobile Weather Unit
- Pump
- Repeater
- Retardant/Mud Pit
- Sling Site
- Spot Fire
- Telephone
- Water Source
- Hazard
- Uncontrolled Fire Edge
- Proposed Clear Line
- Planned Fire Line
- Pioneer Fire
- Sensitive Area
- Fire History 1985-1989
- Fire History 1990-1999
- Fire History 200-2010
- Fire History 2010-2015

**Fire History**

- 1985-1989
- 1990-1999
- 200-2010
- 2010-2015

TFR 6/9226

0 2 4 Nautical Miles

